

# Bonhams



A Private Collection of Lalique Glass

Montpelier Street, London | 20 February 2019



# A Private Collection of Lalique Glass

Montpelier Street, London | Wednesday 20 February 2019, at 1pm

## BONHAMS

Montpelier Street  
Knightsbridge  
London SW7 1HH  
[bonhams.com](http://bonhams.com)

## VIEWING

Sunday 17 February  
11am to 3pm  
Monday 18 February  
9am to 4.30pm  
Tuesday 19 February  
9am to 4.30pm  
Wednesday 20 February  
9am to 11.30am

## BIDS

+44 (0) 20 7447 7447  
+44 (0) 20 7447 7401 fax  
[bids@bonhams.com](mailto:bids@bonhams.com)

Please note that bids should be submitted no later than 24 hours before the sale. New bidders must also provide proof of identity when submitting bids. Failure to do this may result in your bids not being processed.

## Live online bidding is available for this sale

Please email [bids@bonhams.com](mailto:bids@bonhams.com) with "Live bidding" in the subject line 48 hours before the auction to register for this service.

Please Note: Telephone Bidding is available only on lots where the lower end of the estimate is at £500 or above

## ENQUIRIES

Mark Oliver  
Tel: +44 (0) 20 7393 3856  
[mark.oliver@bonhams.com](mailto:mark.oliver@bonhams.com)

Duane Kahlhamer  
Tel: +44 (0) 20 7393 3860  
[duane.kahlhamer@bonhams.com](mailto:duane.kahlhamer@bonhams.com)

## Auction Administrator

Emily Mayson  
Tel: +44 (0) 20 7393 3997  
[emily.mayson@bonhams.com](mailto:emily.mayson@bonhams.com)

[decorativearts@bonhams.com](mailto:decorativearts@bonhams.com)

## SALE NUMBER

25324

## CATALOGUE

£18

## PRESS ENQUIRIES

[press@bonhams.com](mailto:press@bonhams.com)

## CUSTOMER SERVICES

Monday to Friday  
8.30am – 6pm  
+44 (0) 20 7447 7447

Please see back of catalogue for important notice to bidders

## ILLUSTRATION

Front cover: Lots 147 & 148  
Back cover: Lot 210 (detail)  
Inside front cover: Lot 173 (detail)  
Inside back cover: Lot 107 (part)  
Page 5 divider: Lot 199

## DAMAGE AND RESTORATION

For your guidance, in this catalogue our senior specialists have, as far as possible, recorded all significant defects, cracks and restoration. Such descriptions of damage cannot be definitive, and in providing condition reports, we cannot guarantee that there are no other defects present which have not been mentioned. Prospective buyers should satisfy themselves by inspection, as to the condition of each lot. Please see the conditions of sale printed in this catalogue.

## IMPORTANT INFORMATION

The United States Government has banned the import of ivory into the USA. Lots containing ivory are indicated by the symbol  $\Phi$  printed beside the lot number in this catalogue.

## REGISTRATION IMPORTANT NOTICE

Please note that all customers, irrespective of any previous activity with Bonhams, are required to complete the Bidder Registration Form in advance of the sale. The form can be found at the back of every catalogue and on our website at [www.bonhams.com](http://www.bonhams.com) and should be returned by email or post to the specialist department or to the bids department at [bids@bonhams.com](mailto:bids@bonhams.com)

To bid live online and / or leave internet bids please go to [www.bonhams.com/auctions/25324](http://www.bonhams.com/auctions/25324) and click on the Register to bid link at the top left of the page.



## Bonhams 1793 Limited

Registered No. 4326560  
Registered Office: Montpelier Galleries  
Montpelier Street, London SW7 1HH

+44 (0) 20 7393 3900  
+44 (0) 20 7393 3905 fax

## Bonhams International Board

Malcolm Barber Co-Chairman,  
Colin Sheaf Deputy Chairman,  
Matthew Girling CEO,  
Patrick Meade Group Vice Chairman,  
Asaph Hyman, Caroline Oliphant,  
Edward Wilkinson, Geoffrey Davies, James Knight,  
Jon Baddeley, Jonathan Fairhurst, Leslie Wright,  
Rupert Banner, Shahin Virani, Simon Cottle.

## Bonhams UK Ltd Directors

Colin Sheaf Chairman,  
Harvey Cammell Deputy Chairman,  
Emily Barber, Antony Bennett,  
Matthew Bradbury, Lucinda Bredin,  
Simon Cottle, Andrew Currie,  
Charles Graham-Campbell, Matthew Haley,  
Richard Harvey, Robin Hereford,  
Charles Lanning, Grant MacDougall,

Gordon McFarlan, Andrew McKenzie,  
Simon Mitchell, Jeff Muse, Mike Neill,  
Charlie O'Brien, Giles Peppiatt, India Phillips,  
Peter Rees, John Sandon, Tim Schofield,  
Veronique Scorer, Robert Smith, James Stratton,  
Ralph Taylor, Charlie Thomas, David Williams,  
Michael Wynnell-Mayow, Suzannah Yip.

# Sale Information

---

## **BIDS**

+44 (0) 20 7447 7447  
+44 (0) 20 7447 7401 fax  
To bid via the internet please visit  
www.bonhams.com

## **PAYMENTS**

Buyers  
+44 (0) 20 7447 7447  
+44 (0) 20 7447 7401 fax

Sellers  
Payment of sale proceeds  
+44 (0) 20 7447 7447  
+44 (0) 20 7447 7401 fax

## **VALUATIONS, TAXATION & HERITAGE**

+44 (0) 20 7468 8340  
+44 (0) 20 7468 5860 fax  
valuations@bonhams.com

## **CATALOGUE SUBSCRIPTIONS**

To obtain any Bonhams  
catalogue or to take out an  
annual subscription:  
Subscriptions Department  
+44 (0) 1666 502200  
+44 (0) 1666 505107 fax  
subscriptions@bonhams.com

## **SHIPPING**

For information and estimates  
on domestic and international  
shipping as well as export  
licenses please contact Alban  
Shipping on +44 (0) 1582 493099  
enquiries@albanshipping.co.uk

## **BUYERS COLLECTION & STORAGE AFTER SALE**

All sold lots will remain in the  
Collections room at Bonhams  
Knightsbridge for a period of not  
less than 14 calendar days from  
the sale date Wednesday 20  
February 2019.

Lots not collected by 5.30pm  
Tuesday 5 March 2019 will be  
returned back to the department  
storage charges may apply.

## **VAT**

The following symbol is used  
to denote that VAT is due on  
the hammer price and buyer's  
premium

† VAT 20% on hammer price  
and buyer's premium

\* VAT on imported items at  
a preferential rate of 5% on  
hammer price and the prevailing  
rate on buyer's premium

Y These lots are subject to CITES  
regulations, please read the  
information in the back of  
the catalogue

Ω Import high rate VAT on  
imported items at the prevailing  
rate on Hammer Price and  
Buyer's Premium.

## **Payment in Advance**

(Telephone to ascertain amount  
due) by: cash, cheque with  
banker's card, credit, or debit  
card.

## **Payment at time of collection by:**

cash, cheque with banker's card,  
credit, or debit card



The Musée Laliq was lucky to benefit from a loan of a part of John's collection. From the opening in 2011, he trusted us with a loan of hood ornaments and decorative items. He also lent pieces for specific exhibitions. « Laliq and the Art of Travel » was certainly a major event in this partnership as John had managed to collect

almost all the car mascots created by René Laliq. He shared his passion with the visitors and the team of the Musée Laliq. I sincerely thank him for his commitment.

**Véronique Brumm**  
Directeur

# The Making of a Collection

To collect is to go on a journey, often to an unknown destination and with the odd cul-de-sac or fork in the road.

The pleasure when collecting the oeuvre of René Jules Lalique is there are no wrong turns though certainly one may at times have to navigate through a maze of intrigue and discovery. Trust your instincts in that maze or find a trusted guide and the journey will be an enjoyable one wherever it takes you. Or here, with the sale of this collection, know that I travelled some long and winding roads to procure the very best examples I could find of Lalique's work. Items that piqued my interest in terms of both the complexity of manufacture and beauty of design making them expensive when new and thus some of the rarest today.

I was not always satisfied or desiring of ticking boxes for the sake of the collection but rather I favoured pieces that showcased Lalique's talent for drawing, design and manufacture.

Invariably each item in a collection, however humble, will have a story to tell and thus always have a special place in the heart of the collector. Thus parting with mine, formed over some 20 plus years, is such sweet sorrow. Sorrow for obvious reasons, but sweet as I hope each piece will mark a waypoint for the new owner and continue each story. Certainly Lalique's work will outlive us all if we do our curating jobs well.

When Mark Oliver and I were cataloguing this sale it was notable how often we called something out as contemporary in appearance such was the genius of Lalique given many of these designs are now 100 years old or approaching that milestone. Some of course are still manufactured by the modern Lalique SA company but René Lalique not only conceived these designs but also envisaged how to utilise materials such that an ethereal and lifelike quality was formed that seems almost impossible to recreate today.

Gabriel Mouray who wrote the introduction to the 1932 Lalique et Cie Catalogue, as well as several other period publications on Lalique, put it well when he wrote that '(Lalique) gave life to the "menagerie" which, it appears to me, was quite worthy of a place in the glass-cases of the collectors and on the shelves of cultured amateurs. Lalique reveals himself as a sculptor of animals among the very best.

None was able, better than he, to fix in their essential lines the general and typical gait, the familiar and characteristic gestures of those of our inferior brothers towards which he has felt more particularly drawn. Among the winged tributes, let us mention the presence of pigeons and sparrows, plump gluttons, so well reproduced, so lifelike that one would expect them to coo and chirp.' Yes, exactly.

Indeed it was the humble sparrow paperweight you can see illustrated on the inside back cover of this catalogue that was my first ever Lalique purchase. I simply could not resist. With this in mind, I defy anyone to not want to pick up one of his sculptures and enjoy the sensation of feel and the forming of an emotional bond. If you are viewing the sale I would encourage you to use your hands as much as your eyes.

Gustave Geffroy author of the 1922 book 'René Lalique par Gustave Geffroy' wrote of one of the early pieces in this auction, the 'Boîte Louveciennes', of how Lalique had given what was a press-moulded piece the appearance of being engraved by hand such was the lightness and accuracy of the image. This rare box in particular exemplifies this and was no doubt one of the reasons it was chosen by the Musée Lalique for their permanent exhibition from its opening in July 2011, along with many other items from the collection.

It was a pleasure to be involved with the Musée Lalique in Wingen-sur-Moder from prior to the opening and through several exhibitions including 'The Aquatic World of Lalique' in 2014 and 'Lalique and the Art of Travel' in 2016 when all of the car mascots in this sale were exhibited together. Above all it was allowing so many others the opportunity to see and enjoy the collection and to share in my passion and research.

A collection it has been a pleasure to own and that I shall enjoy viewing together again once more at Bonhams before it separates again to destinations anew.

On my journey I made some great friends and met some interesting characters, thanks to them all as their acquaintance added to the pleasure of ownership.

Thank you all also for reading and indulging me here and I hope you enjoy the sale.

John Nemeth  
February 2019





1



2



1



3

1  
**RENÉ LALIQUE (FRENCH, 1860-1945)**  
 A 'L'Exposition Des Verres' Invitation, designed circa 1912  
 pale green glass, mould-blown and frosted; Marcilhac no. Motifs  
 Decoratifs A  
*6.8cm diameter, moulded 'INVITATION L'EXPOSITION DES VERRES  
 DE R.LALIQUE 24 PLACE VENDÔME PARIS*

£800 - 1,200

The Lalique atelier was situated at 24 Place Vendome, Paris,  
 between 1905 and 1935.

2  
**RENÉ LALIQUE (FRENCH, 1860-1945)**  
 A 'Colombes' Pendant, designed in 1920  
 opalescent glass, mould-blown, frosted, and polished, with blue  
 staining; Marcilhac no.1659  
*4cm long, engraved 'R.Lalique'*

£250 - 350

3  
**RENÉ LALIQUE (FRENCH, 1860-1945)**  
 A 'Chasse Chiens' Plate, designed 1914  
 clear glass, mould-blown, frosted and polished, with sepia staining,  
 Marcilhac no. 3001  
*21.4cm diameter, engraved 'R.Lalique France No.3001'*

£300 - 500





4



6



5



7

4

**RENÉ LALIQUE (FRENCH, 1860-1945)**

A 'Artichaut' Perfume-Burner, designed in 1927  
 amber glass, mould-blown, frosted, and polished, with later fittings;  
 Marcilhac no. Brûles-Perfums A  
 8.5cm high (without fittings), moulded 'R.LALIQUE LAMPE  
 HYGIENIQUE BERGER MADE IN FRANCE'

£300 - 500

5

**RENÉ LALIQUE (FRENCH, 1860-1945)**

A 'Trois Branches Roitelets' Candelabra, designed in 1931  
 clear glass, mould-blown, frosted and polished, with detachable  
 metal mount and fitting for electricity supply, Marcilhac no. 2110  
 15.3cm high (without fitting), stencilled 'R.LALIQUE FRANCE'

£1,500 - 2,500

6

**RENÉ LALIQUE (FRENCH, 1860-1945)**

A 'Poisson' Menu, designed in 1931  
 clear glass, mould-blown (partly intaglio), frosted and polished;  
 Marcilhac no.3477  
 16cm. long, stencilled 'R.LALIQUE FRANCE'

£1,000 - 1,500

Exhibited at the Musée Lalique, France.

7

**RENÉ LALIQUE (FRENCH, 1860-1945)**

A Pair of 'Libellule' Knife Rests, designed in 1919  
 clear glass, mould-blown, frosted and polished, with sepia staining;  
 Marcilhac no. 3602  
 each 9.5cm long, each engraved 'R.Lalique France No.3602'

£1,000 - 1,500

Exhibited at the Musée Lalique, France.



8



10



9



11

8

**RENÉ LALIQUE (FRENCH, 1860-1945)**

A 'Alaska' Cendrier, designed in 1931  
Alexandrite glass, mould-blown, faceted and polished; Marcilhac no. 973  
11.7cm high, stencilled 'R.LALIQUE'

£1,000 - 1,500

9

**RENÉ LALIQUE (FRENCH, 1860-1945)**

A Post-War 'Remy Martin' Cendrier  
clear glass, intaglio mould-blown, frosted and polished  
11.3cm diameter, unmarked

£300 - 500

10

**RENÉ LALIQUE (FRENCH 1860-1945)**

An 'Écureuil' Cendrier, designed in 1931  
amber glass, mould-blown, frosted and polished; Marcilhac no. 315  
12cm high, stencilled 'R.LALIQUE FRANCE'

£600 - 900

11

**RENÉ LALIQUE (FRENCH, 1860-1945)**

A 'Deux Colombes' Cendrier, designed in 1931  
clear glass, moulded, frosted and polished; Marcilhac no. 320  
10cm diameter, stencilled 'R.LALIQUE'

£200 - 300



12



13



14

12

**RENÉ LALIQUE (FRENCH, 1860-1945)**

A 'Nemours' Bowl, designed in 1929  
clear glass, mould-blown, frosted and polished, with sepia staining  
and brown enamelling; Marcilhac no. 404  
25.8cm diameter, moulded 'R.LALIQUE FRANCE'

£800 - 1,200

13

**RENÉ LALIQUE (FRENCH, 1860-1945)**

A 'Fleur' Bowl, designed in 1912  
opalescent glass, mould-blown, frosted, and polished, with grey  
staining and brown enamelling; Marcilhac no. 3100  
11.5cm diameter, moulded 'R.LALIQUE' and stencilled 'R.LALIQUE  
FRANCE'

£300 - 500

14

**RENÉ LALIQUE (FRENCH, 1860-1945)**

A 'Anges' Bowl, designed in 1930  
blue glass, mould-blown, frosted and polished; Marcilhac no. 410  
37cm diameter, stencilled 'R.LALIQUE FRANCE'

£4,000 - 6,000

Exhibited at the Musée Lalique, France.



15

15

**RENÉ LALIQUE (FRENCH, 1860-1945)**

A 'Cyprins' Bowl, designed in 1921  
opalescent glass, mould-blown and polished,  
shallow form with inverted rim; Marcilhac no.  
379

*34cm diameter, engraved 'R.Lalique'*

£2,500 - 3,500



16

16

**RENÉ LALIQUE (FRENCH, 1860-1945)**

A 'Martigues' Bowl, designed in 1920  
opalescent glass, mould-blown, frosted and  
polished; Marcilhac no. 577

*36.5cm diameter, moulded 'R.LALIQUE' and  
wheel-cut 'FRANCE'*

£2,000 - 3,000

Exhibited at the Musée Lalique, France.



17

17

**RENÉ LALIQUE (FRENCH, 1860-1945)**

A 'Deux Moineaux Moquers' Bowl, designed  
1930

clear glass, mould-blown, frosted and  
polished; Marcilhac no. 412

*40cm long, stencilled 'R.LALIQUE FRANCE'*

£1,500 - 2,500

18

**RENÉ LALIQUE (FRENCH, 1860-1945)**

A Set of Four 'Surtout Quatre Saisons',  
Statuettes: Printemps, Été, Automne, and  
Hiver, designed in 1939

clear glass, mould-blown, frosted and  
polished; Marcilhac nos. 839, 840, 841 and  
842

each 20cm high, each stencilled 'R.LALIQUE  
FRANCE'

£2,500 - 3,500



18

19

**RENÉ LALIQUE (FRENCH, 1860-1945)**

A 'Groupe de Six Moineaux' Decorative  
Motif, designed in 1933

clear glass, mould-blown, frosted and  
polished; Marcilhac no. 1218

29.8cm long, stencilled 'R.LALIQUE  
FRANCE'

£2,000 - 3,000



19

20

**RENÉ LALIQUE (FRENCH, 1860-1945)**

A Set of Four Table Ornaments: Printemps,  
Été, Automne, and Hiver, designed in 1939

clear glass, mould-blown, frosted and  
polished, one with light sepia staining;  
Marcilhac no. 10-3467

tallest 95cm high, each stencilled  
'R.LALIQUE'

£1,000 - 1,500



20



21

21

**RENÉ LALIQUE (FRENCH, 1860-1945)**

A 'Pigeon Gand' Decorative Motif, designed in 1927 clear glass, mould-blown, frosted, and polished; Marcilhac no. 1205 27cm long, stencilled 'R.LALIQUE FRANCE'

£500 - 700

22

**RENÉ LALIQUE (FRENCH, 1860-1945)**

A Post-War 'Pigeon Verviers' Decorative Motif, designed in 1932 clear glass, mould-blown, frosted and polished; Marcilhac no. 1206 27.8cm long, engraved 'Lalique France'

£400 - 600



22

23

**RENÉ LALIQUE (FRENCH, 1860-1945)**

A 'Truite' Decorative Motif, designed in 1933 clear glass, frosted and polished; Marcilhac no. 1215 35.5cm long, stencilled 'R.LALIQUE FRANCE'

£2,000 - 3,000

Exhibited at the Musée Lalique, France.



23



24

24

**RENÉ LALIQUE (FRENCH, 1860-1945)**

A 'Pigeon Verviers' Décorative Motif, designed in 1932  
clear glass, mould-blown, frosted and polished; Marcilhac no. 1206  
29cm long, stencilled 'R.LALIQUE.

£500 - 700



25

25

**RENÉ LALIQUE (FRENCH, 1860-1945)**

A 'Pigeon Bruges' Décorative Motif, designed in 1931  
clear glass, mould-blown, frosted and polished; Marcilhac no. 1204  
25cm long, stencilled 'R.LALIQUE FRANCE'

£500 - 700



26

26

**RENÉ LALIQUE (FRENCH, 1860-1945)**

A 'Aubépines' carafe, designed in 1914  
clear glass, mould-blown, frosted and polished, with sepia staining;  
Marcilhac no.3157  
30.8cm high, engraved 'R.Lalique France', '19' to bottle and stopper

£1,200 - 1,800

27

**RENÉ LALIQUE (FRENCH, 1860-1945)**

An Early 'Pyramidale' carafe, designed in 1912  
mould-blown, frosted and polished, the stopper with grey staining;  
Marcilhac no. 3152  
31cm high, engraved 'Lalique', '18' to bottle and stopper

£700 - 1,000



27



28

28

**RENÉ LALIQUE (FRENCH, 1860-1945)**

A 'Masques' Carafe, designed in 1913 mould-blown, frosted and polished, with sepia staining, the stopper of silvered metal; Marcilhac no. 3156  
*25.3cm high (without stopper); engraved 'R.Lalique'*

**£1,500 - 2,500**

Exhibited at the Musée Lalique, France, and is illustrated in *Tableware, Musée Lalique, 2017, p.22*. It is also illustrated in *Zoom Sur Lalique, Denise Bloch and Rachel Quinet, Éditions Association d'idées, Collection Zoom, Nancy, pps.46-47*.



29

29

**RENÉ LALIQUE (FRENCH, 1860-1945)**

An Early 'Reine Marguerite' Carafe, designed in 1913 mould-blown, frosted and polished, with sepia staining and brown enamelling; Marcilhac no.3155  
*25cm high, engraved 'Lalique'*

**£700 - 1,000**



30

30

**RENÉ LALIQUE (FRENCH, 1860-1945)**

A 'Côtes Plates' Carafe and an Early Coquilles' Carafe, designed 1919 and 1920 both of clear glass, mould-blown, frosted and polished; Marcilhac nos. 3160 and 3163  
*24.5cm and 34cm high, moulded extended-L 'LALIQUE', the other moulded 'R.LALIQUE' and engraved 'Lalique', '23' to bottle and stopper*

**£500 - 700**





31

31  
**RENÉ LALIQUE (FRENCH, 1860-1945)**

A 'Lézards' Carafe, designed in 1912  
clear glass, mould-blown and frosted, with traces of grey staining;  
Marcilhac no. 3168  
29.3cm high, engraved 'R.Lalique'

£6,000 - 8,000



32

32  
**RENÉ LALIQUE (FRENCH, 1860-1945)**

A 'Six Têtes' Carafe, designed in 1914  
clear glass, mould-blown, frosted and polished, with grey staining;  
Marcilhac no. 3159  
35.7cm high, moulded extended-L 'LALIQUE' and engraved  
'R.Lalique France'

£4,000 - 6,000

Exhibited at the Musée Lalique, France, and is illustrated in  
Tableware, Musée Lalique, 2017, p.22.



33



35



34



36

33

**RENÉ LALIQUE (FRENCH, 1860-1945)**

A 'Quatre Grenouilles' Glass, designed in 1912 clear glass, mould-blown, frosted and polished, with sepia staining; Marcilhac no 3751  
*14cm high, engraved 'R.Lalique France'*

**£500 - 700**

Exhibited at the Musée Lalique, France.

34

**RENÉ LALIQUE (FRENCH, 1860-1945)**

A 'Mouettes' Madère Glass, designed in 1938 clear glass, frosted, faceted and polished; Marcilhac no. Services de Verres E  
*19.5cm high, wheel-cut 'R LALIQUE'*

**£1,500 - 2,500**

This is a rare example from the non-commercial service designed for the royal visit by King George VI and Queen Elizabeth to France in July 1938. The service can be seen in situ with the royals - in a contemporary photograph - during their visit in the catalogue raisonné René Lalique 1860-1945, Felix Marcilhac, Les Éditions de L'Amateur, 1989, p.152.

35

**RENÉ LALIQUE (FRENCH, 1860-1945)**

A 'Mouettes' Bordeaux Glass, designed in 1938 clear glass, mould-blown, frosted, faceted and polished; Marcilhac no. Services de verres E  
*20.5cm high, wheel-cut 'R LALIQUE'*

**£1,500 - 2,500**

This is a rare example from the non-commercial service designed for the royal visit by King George VI and Queen Elizabeth to France in July 1938. The service can be seen in situ with the royals - in a contemporary photograph - during their visit in the catalogue raisonné René Lalique 1860-1945, Felix Marcilhac, Les Éditions de L'Amateur, 1989, p.152.

36

**RENÉ LALIQUE (FRENCH, 1860-1945)**

A 'Bague Lézards' Glass, designed in 1912 clear glass, mould-blown, frosted and polished, with sepia staining; Marcilhac no. 3754  
*13.3cm high, engraved 'R.Lalique'*

**£500 - 700**

37

**RENÉ LALIQUE (FRENCH, 1860-1945)**

A 'Louveciennes' Box and Cover, designed in 1910

clear glass, mould-blown, frosted and polished, with sepia staining; Marcilhac no. 5  
8.8cm diameter, engraved 'R.Lalique France' and moulded 'LALIQUE DEPOSE'

£5,000 - 7,000

Exhibited at the Musée Lalique, France, and is illustrated in Poet of Glass, Musée Lalique, p.21, 2017.



37

38

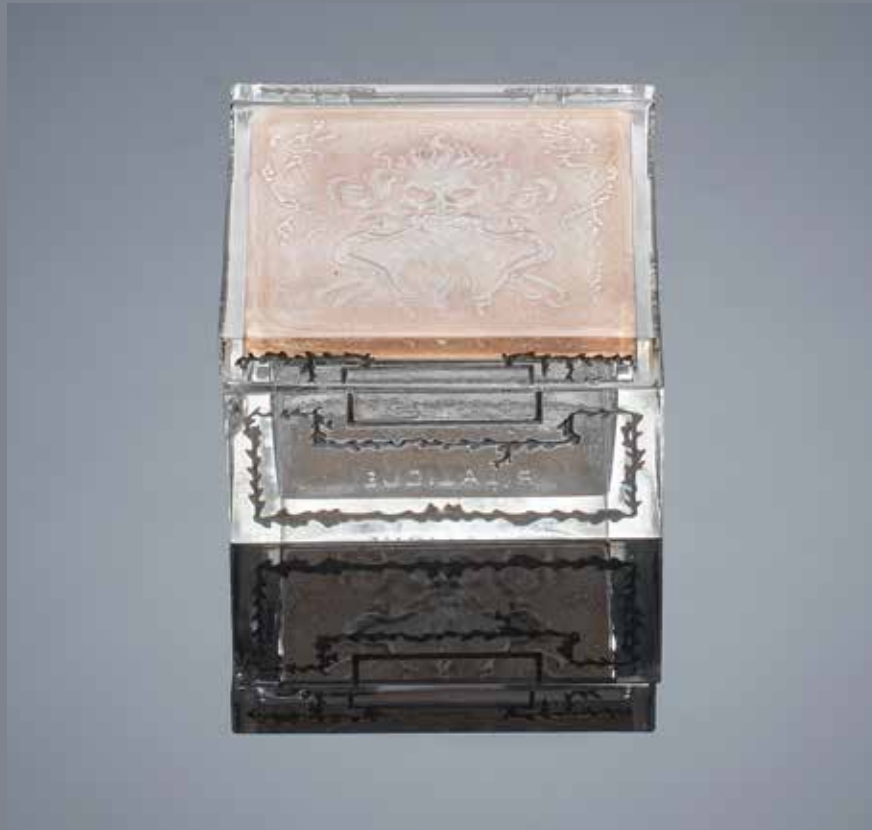
**RENÉ LALIQUE (FRENCH, 1860-1945)**

A 'Faune et Figures' Box and Cover, designed in 1910

clear glass, mould-blown, frosted and polished, with black enamel and sepia staining; Marcilhac no. 18  
6.3cm square, moulded 'R.LALIQUE' and engraved 'Finnigans Bond St. w.'

£2,000 - 3,000

Exhibited at the Musée Lalique, France, and is illustrated in Poet of Glass, Musée Lalique, p.38, 2017.



38



39

39

**RENÉ LALIQUE (FRENCH, 1860-1945)**

A 'Dinard' Box and Cover, designed in 1927  
clear glass, mould-blown, frosted and  
polished, with grey staining; Marcilhac no. 78  
12.5cm long, engraved and moulded  
'R.LALIQUE'

£1,500 - 1,800



40

40

**RENÉ LALIQUE (FRENCH, 1860-1945)**

A 'Cheveux de Venus' Box and Cover,  
designed in 1910  
clear glass, frosted and polished, with grey  
staining; Marcilhac no. 63  
7cm diameter, engraved 'R.Lalique France  
No.69'

£800 - 1,200



41

41

**RENÉ LALIQUE (FRENCH, 1860-1945)**

A 'Quatre Scarabees' Box and Cover,  
designed in 1911  
clear glass, mould-blown, frosted and  
polished, with grey staining; Marcilhac no. 15  
8.7cm diameter, moulded 'R.LALIQUE'

£500 - 800



42



44



43



45

42

**RENÉ LALIQUE (FRENCH, 1860-1945)**

A 'Fountainbleau' Box and Cover, designed in 1924 the cover of mould-blown and frosted clear glass, celluloid box; Marcilhac no. 59  
8.5cm diameter, glass moulded 'R.LALIQUE', celluloid impressed 'LALIQUE'

£500 - 800

43

**RENÉ LALIQUE (FRENCH, 1860-1945)**

A 'Isabelle' Box and Cover, designed in 1924 clear glass, mould-blown and frosted, with sepia staining; Marcilhac no. 64  
8.3cm diameter, moulded 'R.LALIQUE'

£300 - 500

44

**RENÉ LALIQUE (FRENCH, 1860-1945)**

A 'Marguerites' Box and Cover, designed in 1920 clear glass, mould-blown and frosted; Marcilhac no. 69  
8cm high, moulded 'R.LALIQUE'

£200 - 300

45

**RENÉ LALIQUE (FRENCH, 1860-1945)**

A 'Compiègne' Box and Cover, designed in 1924 the cover of mould-blown and frosted clear glass, celluloid box; Marcilhac no. 58  
8.5cm diameter, celluloid impressed 'LALIQUE'

£400 - 600



46

46

**RENÉ LALIQUE (FRENCH, 1860-1945)**

A 'Chantilly' Box and Cover, designed in 1924 clear glass, mould-blown, frosted and polished; Marcilhac no. 62 8.5cm high, moulded 'R.LALIQUE'

£300 - 500



48

48

**RENÉ LALIQUE (FRENCH, 1860-1945)**

A 'Deux Pigeons' Box and Cover, designed in 1919 clear glass, mould-blown and frosted; Marcilhac no. 34 7cm diameter, moulded 'R.LALIQUE'

£700 - 1,000



47

47

**RENÉ LALIQUE (FRENCH, 1860-1945)**

A 'Guirlande de Graines' Box and Cover, designed in 1920 clear glass, mould-blown and frosted, with grey staining, Marcilhac no.28 10.2cm diameter, moulded with VDA eye mask trademark

£300 - 500



49

49

**RENÉ LALIQUE (FRENCH, 1860-1945)**

A 'Trois Paons' Box and Cover, designed in 1919 clear glass, mould-blown and frosted; Marcilhac no. 30 7.2cm diameter, moulded 'R.LALIQUE'

£700 - 1,000



50



51



52

**50**  
**RENÉ LALIQUE (FRENCH, 1860-1945)**  
 A 'Ambre' Scent Bottle and Stopper for D'Orsay, designed in 1911 moulded, frosted, and polished, with sepia staining  
*13.2cm high, intaglio 'LALIQUE' upside down*

£3,000 - 5,000

A rare variant.

**51**  
**RENÉ LALIQUE (FRENCH, 1860-1945)**  
 A 'Styx' Scent Bottle and Stopper for Coty, designed in 1911 clear glass, mould-blown, frosted and polished, with grey staining; Marcilhac no. Styx-2  
*12.3cm high, intaglio 'LALIQUE', the bottle and stopper engraved '26'*

£800 - 1,200

**52**  
**RENÉ LALIQUE (FRENCH, 1860-1945)**  
 A Rare 'Moraima' Scent Bottle and Stopper for GAL, designed in 1926 clear glass, mould-blown, frosted and polished; Marcilhac no. GAL-1  
*8cm diameter, bottle moulded 'R.LALIQUE', stopper 'GAL MADRID', both engraved '137'*

£3,000 - 5,000



53



54



55

53  
**RENÉ LALIQUE (FRENCH, 1860-1945)**  
A 'Lentilles' Scent Bottle and Stopper, designed in 1912 clear glass, mould-blown, frosted and polished, with blue staining; Marcilhac no. 485  
*8cm diameter, engraved 'R.Lalique', the bottle and stopper engraved '168'*

£700 - 900

This item is illustrated in *Perfume Bottles*, Musée Lalique, 2017, p.31.

54  
**RENÉ LALIQUE (FRENCH, 1860-1945)**  
A 'Fragonard' Scent Bottle and Stopper for Fragonard, designed in 1911 clear glass, mould-blown, frosted and polished; Marcilhac no. Fragonard-1  
*13.8cm high, moulded 'R.LALIQUE FRANCE', the bottle and stopper engraved '498'*

£400 - 600

55  
**RENÉ LALIQUE (FRENCH, 1860-1945)**  
An Early 'Lunaria' Scent Bottle and Stopper, designed in 1912 clear glass, mould-blown, frosted and polished; Marcilhac no. 482  
*8cm diameter, engraved 'Lalique'*

£2,000 - 2,500





56



57



58

56

**RENÉ LALIQUE (FRENCH, 1860-1945)**

A 'Quatre Soleils' Scent Bottle and Stopper, designed in 1912  
clear glass, mould-blown, frosted, and sepia stained, with foil inclusions giving illusion of bottle being illuminated from within  
8cm diameter, engraved 'R.LALIQUE', '328a' to bottle and stopper

£5,000 - 7,000

This is illustrated in *Perfume Bottles*, Musée Lalique, 2017, p.31.

57

**RENÉ LALIQUE (FRENCH, 1860-1945)**

A 'Niobe' Scent Bottle and Stopper for Violet, designed in 1919  
clear glass, mould-blown, frosted and polished; Marcilhac no. Violet-1  
11cm high, intaglio 'RL', the stopper and bottle engraved '172'

£1,000 - 1,500

58

**RENÉ LALIQUE (FRENCH, 1860-1945)**

An Early 'Capricornes' Scent Bottle and Stopper, designed in 1912  
clear glass, mould-blown, frosted and polished, with grey staining; Marcilhac no. 484  
8cm high, engraved 'Lalique', '18' to bottle and stopper

£1,500 - 2,500

**RENÉ LALIQUE (FRENCH, 1860-1945)**

A 'Côte D'Azur' Statuette, designed in 1929  
 clear glass, mould-blown, frosted and polished  
 16.5cm high, moulded inscription 'WL CÔTE D'AZUR PULLMAN  
 EXPRESS 9 DECEMBRE 1929 PLM' and intaglio 'R LALIQUE'

£5,000 - 7,000

This statuette, modelled after the famed 'Vitesse' glass car mascot also by Lalique, was created to commemorate the inaugural Paris Gare de Lyon to Ventimiglia journey of the Côte D'Azur Pullman Express, operated by the French rail companies, Compagnie Internationale des Wagons-Lits and Compagnie des Chemins de Fer de Paris à Lyon et à la Méditerranée, and was presented to passengers of the train.

See Plate 87, Car Mascots, An Enthusiasts Guide, by Giuseppe Sirignano and David Sulzberger.

Exhibited at the Musée Lalique, France.





60

60  
**RENÉ LALIQUE (FRENCH, 1860-1945)**

A 'Figurine Avec Guirlande De Fruits' Statuette, designed in 1913 clear glass, mould-blown and frosted, with sepia staining; Marcilhac no. 825  
 21cm high, wheel-engraved 'R.LALIQUE'

£2,000 - 3,000

61

**RENÉ LALIQUE (FRENCH, 1860-1945)**

A 'Sainte Thérèse De L'Enfant Jésus' Statuette, designed in 1935 clear glass, mould-blown, frosted and polished, mounted in an ebonised wood base; Marcilhac no. 1221  
 37cm high, stencilled 'R.LALIQUE FRANCE'

£1,000 - 1,500

62

**RENÉ LALIQUE (FRENCH, 1860-1945)**

A 'Sirène' Car Mascot, designed in 1920 clear glass, mould-blown, frosted and polished, with traces of grey staining; Marcilhac no. 831  
 10.5cm high, very faintly moulded 'R.LALIQUE' and engraved 'R.Lalique'

£2,000 - 3,000

Exhibited at the Musee Lalique, France.



61



62



63



65



64

63

**RENÉ LALIQUE (FRENCH, 1860-1945)**

An Early Post-War 'Floreal' Statuette and a 'Pasteur' Plaque, designed in 1942 and 1922

the statuette of clear glass, mould-blown, frosted and polished, mounted on a square black vitrolite base; Marcilhac no.1184 the plaque of clear glass, mould-blown, frosted, and in original presentation box; Marcilhac no. Motif Décoratifs B statuette 8.5cm high, stencilled 'LALIQUE FRANCE'; plaque 10cm diameter, moulded 'R.LALIQUE' and 'LOUIS PASTEUR 1822 . 1922'

£250 - 350

64

**RENÉ LALIQUE (FRENCH, 1860-1945)**

A 'La Madone a L'Enfant' Figure, designed in 1938

clear glass, mould-blown, frosted and polished, Marcilhac no. 1227 19.5cm high, stencilled 'R.LALIQUE FRANCE'

£800 - 1,200

65

**RENÉ LALIQUE (FRENCH, 1860-1945)**

An Early 'Statuette Drapée' seal, designed in 1912

clear glass, mould-blown, frosted, and polished, with light green staining; Marcilhac no. 181 7cm high, engraved 'Lalique'

£1,000 - 1,500

66

**RENÉ LALIQUE (FRENCH, 1860-1945)**

A 'Naiade' Car Mascot, designed in 1920  
clear glass, mould-blown, frosted and polished, with sepia staining;  
Marcilhac no. 832  
*13cm high, moulded 'R.LALIQUE'*

**£1,500 - 2,500**

Exhibited at the Musée Lalique, France, and an image of this piece was used for a souvenir postcard at the museum.



66

67

**RENÉ LALIQUE (FRENCH, 1860-1945)**

A 'Naiade' Car Mascot, designed in 1920  
opalescent glass, mould-blown, frosted and polished; Marcilhac no. 832  
*13cm high, moulded 'R.LALIQUE' and engraved 'R.LALIQUE FRANCE No.831'*

**£3,000 - 5,000**

Exhibited at the Musée Lalique, France, and is illustrated in The Aquatique World of Lalique, a Connaissance Des Arts Special Issue in collaboration with Musée Lalique, Société Française de Promotion Artistique, 2014, p.19.



67

68

**RENÉ LALIQUE (FRENCH, 1860-1945)**

A 'Sirène' Car Mascot, designed in 1920  
clear glass, mould-blown, frosted and polished, with blue staining,  
Marcilhac no. 831  
*10.3cm high, moulded 'R.LALIQUE' and engraved 'R.Lalique France'*

**£2,000 - 3,000**

Exhibited at the Musée Lalique, France, and is illustrated in The Aquatique World of Lalique, a Connaissance Des Arts Special Issue in collaboration with Musée Lalique, Société Française de Promotion Artistique, 2014, p.19.



68



69-73

69

**RENÉ LALIQUE (FRENCH, 1860-1945)**

A 'Poisson' Seal, designed in 1913  
 opalescent glass, mould-blown, frosted and polished, with blue  
 staining; Marcilhac no. 182  
 4.8cm high, intaglio 'LALIQUE' and engraved 'France'

£100 - 150

70

**RENÉ LALIQUE (FRENCH, 1860-1945)**

A 'Poisson' Seal, designed in 1913  
 blue glass, moulded, frosted and polished, Marcilhac no.182  
 4.8cm high, intaglio 'LALIQUE' and engraved 'France'

£100 - 150

71

**RENÉ LALIQUE (FRENCH, 1860-1945)**

A 'Poisson' Seal, designed in 1913  
 green glass, mould-blown, frosted and polished; Marcilhac no. 182  
 4.8cm high, intaglio 'LALIQUE' and engraved 'France'

£100 - 150

72

**RENÉ LALIQUE (FRENCH, 1860-1945)**

A 'Poisson' Seal, designed in 1913  
 teal glass, mould-blown, frosted and polished; Marcilhac no. 182  
 4.9cm high, intaglio 'LALIQUE' and engraved 'France'

£100 - 150

73

**RENÉ LALIQUE (FRENCH, 1860-1945)**

A 'Poisson' Seal, designed in 1913  
 grey glass, mould-blown, frosted and polished; Marcilhac no. 182  
 4.8cm high, intaglio 'LALIQUE' and engraved 'France'

£100 - 150



74



76



75



77

74

**RENÉ LALIQUE (FRENCH, 1860-1945)**

A 'Renard' Seal, designed in 1926  
clear glass, mould-blown and polished, Marcilhac no. 217  
4.6cm high, engraved 'R.Lalique'

£300 - 500

75

**RENÉ LALIQUE (FRENCH, 1860-1945)**

A 'Pelican' Seal, designed in 1931  
clear glass, mould-blown, frosted and polished; Marcilhac no. 222  
7.3cm high, engraved 'R.Lalique'

£700 - 1,000

Exhibited at the Musée Lalique, France.

76

**RENÉ LALIQUE (FRENCH, 1860-1945)**

A 'Trois Papillons' Seal, designed in 1919  
clear glass, intaglio mould-blown, frosted and polished, with light  
grey staining; Marcilhac no.197  
6.5cm high, engraved 'R.Lalique' and 'France'

£700 - 1,000

77

**RENÉ LALIQUE (FRENCH, 1860-1945)**

A 'Alaska' and a 'Naiade seal, designed in 1931 and 1930  
one is opalescent glass, mould-blown and polished; Marcilhac no.  
236; the other of clear glass, mould-blown, frosted and polished;  
Marcilhac no. 221  
7cm and 9cm high, both engraved 'R.Lalique'

£500 - 700



78

78

**RENÉ LALIQUE (FRENCH, 1860-1945)**

A 'Sauterelle' Seal, designed in 1913  
electric blue glass, mould-blown, frosted and polished; Marcilhac no. 183

4cm high, intaglio 'LALIQUE FRANCE'

£500 - 700



79

79

**RENÉ LALIQUE (FRENCH, 1860-1945)**

A 'Chamois' Seal, designed in 1931  
mould-blown and polished; Marcilhac no. 226

4.8cm high, stencilled 'R.LALIQUE FRANCE'

£500 - 800



80

80

**RENÉ LALIQUE (FRENCH, 1860-1945)**

A 'Soucis' Seal, designed in 1931  
amber glass, mould-blown, frosted and polished; Marcilhac no. 235

8.5cm high, engraved 'R.Lalique France'

£300 - 500





81



83



82



84

81  
**RENÉ LALIQUE (FRENCH, 1860-1945)**  
An Early 'Victoire' Seal, designed in 1920  
clear glass, mould-blown, frosted, and polished, with light grey  
staining, and engraved monogram to underside of base; Marcilhac  
no. 210  
*4.5cm high, moulded 'LALIQUE'*

£600 - 800

82  
**RENÉ LALIQUE (FRENCH, 1860-1945)**  
A 'Mouche' Seal, designed in 1912  
clear glass, mould-blown, frosted and polished, with blue staining;  
Marcilhac no. 180  
*height 6.5cm, unmarked*

£700 - 1,000

This was previously in the collection of Marie-Claude Lalique - see  
Vente Lalique, Drouot Montaigne, Boisgiraud & Associates, by Felix  
Marcilhac, 6 December 2005, featuring a wide range of René Lalique  
items from the estate of Marie Claude Lalique, lot no. 114.

For details of the charges payable in addition to the final Hammer Price of each Lot  
please refer to paragraphs 7 & 8 of the Notice to Bidders at the back of the catalogue.

83  
**RENÉ LALIQUE (FRENCH, 1860-1945)**  
An Early 'Trois Papillons' Seal, designed in 1919  
clear glass, intaglio mould-blown, frosted and polished, with grey  
staining; Marcilhac no. 197  
*6.5cm high, engraved 'Lalique'*

£500 - 800

84  
**RENÉ LALIQUE (FRENCH, 1860-1945)**  
A 'Deux Colombes' Seal, designed in 1931  
clear glass, mould-blown, frosted and polished; Marcilhac no. 230  
*7.5cm long, stencilled 'R.Lalique'*

£300 - 500



85

85

**RENÉ LALIQUE**

A 'Bressan' Seal, designed in 1931  
clear glass, mould-blown, frosted and polished, Marcilhac no. 232  
9.5cm long, engraved 'R.Lalique'

£2,000 - 3,000



86

86

**RENÉ LALIQUE (FRENCH, 1860-1945)**

A 'Deux Hiboux' Seal, designed in 1931  
clear glass, mould-blown, frosted and polished, and engraved  
monogram to the underside; Marcilhac no.237  
7.5cm high, stencilled 'R.LALIQUE'

£1,500 - 2,500



87

87

**RENÉ LALIQUE (FRENCH, 1845-1945)**

A 'Les Sources' Seal, designed in 1925  
clear glass, intaglio moulded-blown, frosted and polished; Marcilhac  
no. 199  
7.8cm high, intaglio 'Les Sources' and 'R.LALIQUE'

£1,500 - 2,500

88

**RENÉ LALIQUE (FRENCH, 1860-1945)**

A 'Deux Danseuses' Seal, designed in 1919  
clear glass, intaglio mould-blown, frosted and polished; Marcilhac no.  
194  
6.7cm high, engraved 'R.Lalique'

£1,500 - 2,500



88

89

**RENÉ LALIQUE (FRENCH, 1860-1945)**

A 'Hirondelles' Seal, designed in 1919  
clear glass, mould-blown, frosted and polished, with traces of blue  
staining; Marcilhac no. 188  
5cm high, engraved 'R.Lalique'

£800 - 1,200



89

90

**RENÉ LALIQUE (FRENCH, 1860-1945)**

A 'Bluets' Seal, designed in 1912  
electric blue glass, mould-blown, frosted and polished; Marcilhac no.  
178  
4.6cm high, engraved 'R.Lalique'

£700 - 1,000



90



91

91

**RENÉ LALIQUE (FRENCH, 1860-1945)**

A 'Pigeons' Seal, designed in 1913  
clear glass, mould-blown, frosted and polished, with light grey  
staining; Marcilhac no. 186  
*10.2cm high, engraved 'R.Lalique'*

£2,000 - 3,000



92

92

**RENÉ LALIQUE (FRENCH, 1860-1945)**

An 'Athlètes' Seal, designed in 1931  
clear glass, mould-blown, frosted and polished, with sepia staining;  
Marcilhac no. 229  
*9.7cm high, stencilled 'R.LALIQUE'*

£2,000 - 3,000



93

93

**RENÉ LALIQUE (FRENCH, 1860-1945)**

An Early 'Aigle' Seal, designed in 1912  
clear glass, mould-blown, frosted and polished, with grey staining;  
Marcilhac no. 184  
*9cm high, engraved 'Lalique'*

£2,000 - 3,000

94

**RENÉ LALIQUE (FRENCH, 1860-1945)**

A 'Tête D'Aigle' Seal, designed in 1911  
amber glass, mould-blown, frosted and polished; Marcilhac no. 175  
8cm high, engraved 'R.Lalique France No.175'

£500 - 800



94

95

**RENÉ LALIQUE (FRENCH, 1860-1945)**

An Early 'Tête D'Aigle' Seal, designed in 1911  
moulded, frosted, and polished, with grey staining,  
and engraved monogram to underside of base; Marcilhac no. 175  
8cm high, engraved 'Lalique'

£300 - 500



95

96

**RENÉ LALIQUE (FRENCH, 1860-1945)**

A 'Tête D'Aigle' Seal, designed in 1911  
black glass, mould-blown, frosted and polished; Marcilhac no. 175  
8cm high, engraved 'R.Lalique France No.175'

£600 - 900



96



97

97

**RENÉ LALIQUE (FRENCH, 1860-1945)**

A 'Chardonneret Timide' Paperweight, designed in 1931  
pale yellow glass, frosted and polished; Marcilhac no. 1209  
12.5cm high, stencilled 'R.LALIQUE'

£250 - 350



98

98

**RENÉ LALIQUE (FRENCH, 1860-1945)**

A 'Taureau Sacre' Paperweight, designed in 1938  
clear glass, mould-blown, frosted, and polished; Marcilhac ref.  
Presse-Papiers A  
9.2cm long, stencilled 'ROTTERDAM LLOYD ROYAL DUTCH MAIL'  
and 'R.LALIQUE FRANCE'

£300 - 500



99

99

**RENÉ LALIQUE (FRENCH, 1860-1945)**

A 'Antilope' paperweight, designed in 1929  
clear glass, mould-blown and polished; Marcilhac no. 1148  
8.7cm high, engraved 'R.Lalique France'

£300 - 500



100

100

**RENÉ LALIQUE (FRENCH, 1860-1945)**

A 'Barbillon' Paperweight, designed in 1931 clear glass, mould-blown, frosted and polished; Marcilhac no. 1176 9.4cm long, stencilled 'R.LALIQUE'

£300 - 500

101

**RENÉ LALIQUE (FRENCH, 1860-1945)**

A Rare 'Renne' Paperweight, designed in 1931 clear glass, mould-blown, frosted and polished; Marcilhac no. 1197 9.5cm high, stencilled 'R.LALIQUE FRANCE'

£500 - 800



102

102

**RENÉ LALIQUE (FRENCH, 1845-1960)**

A 'Double Marguerite' Paperweight, designed in 1919 deep amber glass, mould-blown, frosted and polished; Marcilhac no. 802 8cm high, engraved 'R.LALIQUE'

£300 - 500

103

**RENÉ LALIQUE (FRENCH, 1845-1960)**

An Early 'Double Marguerite' Paperweight, designed in 1919 amber glass, mould-blown, frosted and polished, with traces of white staining; Marcilhac no. 802 8cm high, engraved 'Lalique'

£300 - 500



104

104

**RENÉ LALIQUE (FRENCH, 1860-1945)**

A Post-War 'Taureau' Paperweight, designed in 1931  
clear glass, mould-blown, frosted and polished; Marcilhac no. 1194  
11cm long, stencilled 'LALIQUE FRANCE'

£300 - 500



105

105

**RENÉ LALIQUE (FRENCH, 1860-1945)**

A 'Daim' Paperweight, designed in 1929  
clear glass, mould-blown, frosted and polished; Marcilhac no. 1168  
8cm high, moulded 'R.LALIQUE'

£200 - 300



106

106

**RENÉ LALIQUE (FRENCH, 1860-1945)**

A Post-War 'Bison' Paperweight, designed in 1931  
clear glass, mould-blown, frosted and polished; Marcilhac no. 1196  
12cm long, stencilled 'LALIQUE FRANCE'

£300 - 500





107



108

107

**RENÉ LALIQUE (FRENCH, 1860-1945)**

Three 'Moineau' Paperweights: 'Fier', 'Hardi' and 'Timide', designed in 1929 each of clear glass, moulded, frosted, polished, and each with traces of sepia staining; Marcilhac nos.1149, 1150 and 1151 8.3, 9.2 and 9.3cm high, each moulded and engraved 'R.Lalique France'

£300 - 500

108

**RENÉ LALIQUE (FRENCH, 1860-1945)**

Three 'Chardonneret' Paperweights: 'Timide', 'Hardi' and 'Moqueur', designed in 1931 each of clear glass, mould-blown, frosted and polished, 'Timide' and 'Hardi' with traces of sepia staining; Marcilhac nos.1209, 1210 and 1211 12.5, 10.5 and 10.5cm long, each stencilled 'R.LALIQUE FRANCE'

£750 - 1,000



109

109

**RENÉ LALIQUE (FRENCH, 1860-1945)**

A 'Moineau Sur Socle, Ailes Ouvertes' Paperweight, designed in 1929

the glass of faint amethyst hue, moulded, frosted and polished; Marcilhac no.1155

12cm long, moulded 'R.LALIQUE FRANCE' and engraved 'R.Lalique France'

£500 - 700



110

110

**RENÉ LALIQUE (FRENCH, 1860-1945)**

A 'Moineau Sur Socle, Ailes Croisées' Paperweight, designed in 1929

clear glass, mould-blown, frosted and polished; Marcilhac no. 1154

11cm high, moulded 'R.LALIQUE FRANCE'

£500 - 700



111

111

**RENÉ LALIQUE (FRENCH, 1860-1945)**

A 'Moineau Sur Socle, Ailes Fermées' Paperweight, designed in 1929

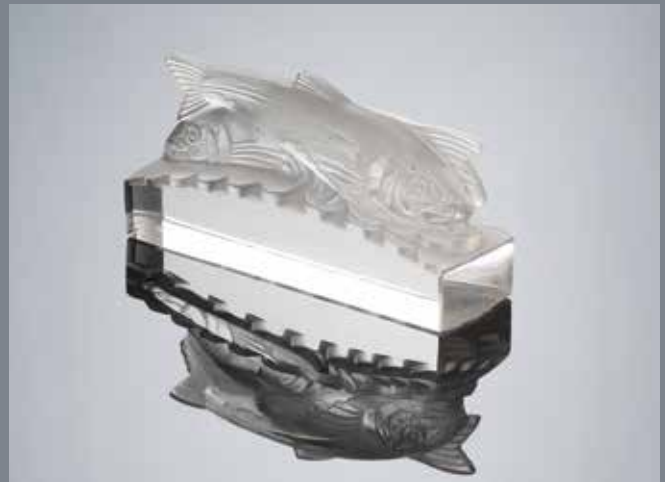
clear glass, mould-blown, frosted and polished, Marcilhac no. 1156

11.5cm high, very faint moulded mark and engraved 'R.Lalique France'

£500 - 700



112



113



114

112  
**RENÉ LALIQUE (FRENCH, 1860-1945)**  
 A Very Rare 'Trois Sardines' Paperweight, designed in 1931 clear glass, mould-blown, frosted and polished; Marcilhac no. 804  
*10cm long, stencilled 'R.LALIQUE' and engraved '47'*

**£1,000 - 1,500**

Exhibited at the Musée Lalique, France.

113  
**RENÉ LALIQUE (FRENCH, 1860-1945)**  
 A Very Rare 'Deux Sardines' Paperweight, designed in 1931 clear glass, mould-blown, frosted and polished; Marcilhac no. 803  
*10cm long, stencilled 'R.LALIQUE' and engraved '46'*

**£1,000 - 1,500**

Exhibited at the Musée Lalique, France.

114  
**RENÉ LALIQUE (FRENCH, 1860-1945)**  
 A 'Crabe' Paperweight, designed in 1933 clear glass, mould-blown, frosted and polished; Marcilhac no. 1219  
*16cm long, stencilled 'R.LALIQUE FRANCE'*

**£2,000 - 3,000**

Exhibited at the Musée Lalique, France.



115

115

**RENÉ LALIQUE (FRENCH, 1860-1945)**

A 'Chrysis' Paperweight, designed in 1931  
clear glass, mould-blown, frosted and polished; Marcilhac no. 1183  
13.5cm high, stencilled 'R.LALIQUE FRANCE'

£1,500 - 2,500



116

116

**RENÉ LALIQUE (FRENCH, 1860-1945)**

A 'Toby, Elephant' Paperweight, designed in 1931  
clear glass, mould-blown, frosted and polished; Marcilhac no. 1192  
8.3cm high, stencilled 'R.LALIQUE'

£1,500 - 2,500



117

117

**RENÉ LALIQUE (FRENCH, 1860-1945)**

A 'Éléphant' Paperweight, designed in 1931  
clear glass, mould-blown, frosted and polished; Marcilhac no. 1191  
15.5cm high, stencilled 'R.LALIQUE FRANCE'

£1,000 - 1,500

This was by far the most expensive of Lalique's paperweights when new in 1931, costing even more than the Renard (Fox), and thus appears very rarely in pre-war form.



118



120



119



121

118

**RENÉ LALIQUE (FRENCH, 1860-1945)**

A 'Deux Tourterelles' Paperweight, designed in 1925 opalescent glass, mould-blown, frosted and polished, with bluish green staining; Marcilhac no. 1128  
*11.8cm high, engraved 'R. Lalique France'*

£1,000 - 1,500

119

**RENÉ LALIQUE (FRENCH, 1860-1945)**

A 'Cheval' Paperweight, designed in 1929 clear glass, mould-blown, frosted and polished; Marcilhac no. 1159  
*9.3cm long, moulded 'R.LALIQUE FRANCE'*

£800 - 1,200

120

**RENÉ LALIQUE (FRENCH, 1845-1960)**

A 'Deux Aigles' Paperweight, designed in 1914 deep amber glass, mould-blown, frosted and polished, with white staining; Marcilhac no. 801  
*10.3cm wide, intaglio 'R.LALIQUE'*

£1,000 - 1,500

121

**RENÉ LALIQUE (FRENCH, 1845-1960)**

A 'Deux Tourterelles' Paperweight, designed in 1925 clear glass, mould-blown, frosted and polished, with blue staining; Marcilhac no. 1128  
*12cm high, stencilled 'R.LALIQUE FRANCE'*

£1,000 - 1,500



122



124



123



125

122

**RENÉ LALIQUE (FRENCH, 1860-1945)**

A 'Chat' Paperweight, designed 1929  
clear glass, mould-blown, frosted and polished; Marcilhac no. 1162  
11.5cm long, engraved 'R.Lalique France'

£1,500 - 2,500

123

**RENÉ LALIQUE (FRENCH, 1860-1945)**

A 'Rhinoceros' Paperweight, designed in 1931  
clear glass, mould-blown, frosted and polished; Marcilhac no. 1195  
11.5cm high, stencilled 'R.LALIQUE FRANCE'

£1,000 - 1,500

124

**RENÉ LALIQUE (FRENCH, 1860-1945)**

A 'Rhinoceros' Paperweight, designed in 1931  
clear glass, mould-blown, frosted and polished; Marcilhac no. 1195  
11.5cm high, stencilled 'R.LALIQUE FRANCE'

£1,000 - 1,500

125

**RENÉ LALIQUE (FRENCH, 1860-1945)**

A 'Chat' Paperweight, designed in 1929  
clear glass, mould-blown, frosted and polished; Marcilhac no. 1162  
11.5cm long, engraved 'R.Lalique France'

£1,500 - 2,500

126

**RENÉ LALIQUE (FRENCH, 1860-1945)**

A 'Langoustine' Paperweight, designed in 1933  
clear glass, mould-blown, frosted and polished; Marcilhac no. 1220  
20.2cm high, stencilled 'R.LALIQUE FRANCE'

£2,000 - 3,000

Exhibited at the Musée Lalique, France.



126

127

**RENÉ LALIQUE (FRENCH, 1860-1945)**

A 'Chouette' Paperweight, designed in 1931  
clear glass, mould-blown, frosted and polished; Marcilhac no. 1193  
9cm high, stencilled 'R.Lalique France'

£1,000 - 1,500



127

128

**RENÉ LALIQUE (FRENCH, 1860-1945)**

A 'Deux Aigles' Paperweight, designed in 1914  
clear glass, mould-blown, frosted, and polished; Marcilhac no. 801  
10cm long, intaglio 'R.LALIQUE'

£1,000 - 1,500



128



129

**RENÉ LALIQUE (FRENCH, 1860-1945)**

A 'Longchamp A' Car Mascot, designed in 1929  
clear glass, mould-blown, frosted and polished; Marcilhac no. 1152A  
15.5cm high, moulded 'R.LALIQUE FRANCE'

**£15,000 - 25,000**

Exhibited at the Musée Lalique, France, and an image of this piece was used for a souvenir postcard at the museum. It is also illustrated in the Lalique & Wingen-Sur-Moder publication, Les Amis du Musée Lalique, July 2011, p.23.



130

**RENÉ LALIQUE (FRENCH 1860-1945)**

A 'Tête D'Épervier Car Mascot, designed in 1928  
clear glass, mould-blown, frosted and polished; Marcilhac no. 1139  
6.5cm high, moulded 'LALIQUE FRANCE'

£1,500 - 2,500

Exhibited at the Musée Lalique, France.



130

131

**RENÉ LALIQUE (FRENCH, 1860-1960)**

A 'Saint-Christophe' Car Mascot, designed in 1928  
clear glass, intaglio mould-blown, frosted and polished, with a pale  
brown staining; Marcilhac no.1142  
11.8cm high, intaglio 'R.LALIQUE FRANCE'

£1,000 - 1,500

Exhibited at the Musée Lalique, France.



131

132

**RENÉ LALIQUE (FRENCH, 1860-1945)**

A 'Tête de Coq' Car Mascot, designed in 1928  
clear glass, mould-blown, frosted and polished, with grey staining;  
Marcilhac no. 1137  
18cm high, intaglio 'LALIQUE FRANCE'

£1,000 - 1,500

Exhibited at the Musée Lalique, France.



132



133



135



134



136

133

**RENÉ LALIQUE (FRENCH, 1860-1945)**

A 'Faucon' Car Mascot, designed in 1928 the clear glass of amethyst hue, mould-blown, frosted and polished; Marcilhac no. 1124

15.5cm high, moulded 'R.LALIQUE', wheel-cut 'FRANCE', and engraved 'No.1124'

**£1,800 - 2,200**

Exhibited at the Musée Lalique, France.

134

**RENÉ LALIQUE (FRENCH, 1860-1945)**

A 'Tête D'Aigle' Car Mascot, designed in 1928 clear glass, mould-blown, frosted and polished; Marcilhac no. 1138  
11cm high, moulded 'R.LALIQUE' and stencilled 'LALIQUE FRANCE'

**£1,000 - 1,500**

Exhibited at the Musée Lalique, France.

135

**RENÉ LALIQUE (FRENCH, 1860-1945)**

A 'Coq Nain' Car Mascot, designed in 1928 the glass of an amethyst hue, mould-blown, frosted and polished; Marcilhac no. 1135

20cm high, moulded 'R.LALIQUE FRANCE'

**£500 - 800**

Exhibited at the Musée Lalique, France, and is illustrated in 'Lalique et l'art du voyage', L'Objet D'Art Hors-Séries, Éditions Faton, Dijon Cedex, 2016, p.47.

136

**RENÉ LALIQUE (FRENCH, 1860-1945)**

A 'Coq Nain' Car Mascot, designed in 1928 topaz glass, moulded, frosted, and polished; Marcilhac no.1135  
20.2cm high, moulded 'R.LALIQUE FRANCE'

**£1,500 - 2,500**

Exhibited at the Musée Lalique, France.



137

137

**RENÉ LALIQUE (FRENCH, 1860-1960)**

A 'Sanglier Car Mascot, designed in 1929 topaz glass, mould-blown, frosted and polished; Marcilhac no. 1157  
9cm long, moulded 'R.LALIQUE FRANCE' and engraved 'R.Lalique France No.1157'

£1,500 - 2,500

Exhibited at the Musée Lalique, France.



138

138

**RENÉ LALIQUE (FRENCH, 1860-1945)**

A 'Sanglier' Car Mascot, designed in 1929 clear glass, mould-blown, frosted and polished, with grey staining; Marcilhac no. 1157  
9.2cm wide, moulded 'R.LALIQUE'

£1,000 - 1,500

Exhibited at Musée Lalique, France.



139

139

**RENÉ LALIQUE (FRENCH, 1845-1960)**

A 'Sanglier' Car Mascot, designed in 1929 grey glass, mould-blown, frosted and polished; Marcilhac no. 1157  
9cm long, moulded 'R.LALIQUE' and stencilled 'R.LALIQUE FRANCE'

£1,000 - 1,500

Exhibited at the Musée Lalique, France.



140

140

**RENÉ LALIQUE (FRENCH, 1860-1945)**

A 'Grenouille' Car Mascot, designed in 1928  
pale amethyst glass, mould-blown, frosted and polished; Marcilhac  
no. 1146  
*6cm high, moulded 'LALIQUE' and engraved 'R.Lalique France'*

**£7,000 - 10,000**

Exhibited at the Musée Lalique, France.



141

141

**RENÉ LALIQUE (FRENCH, 1860-1945)**

A 'Longchamp B' Car Mascot, designed in 1929  
clear glass, mould-blown, frosted and polished; Marcilhac no. 1152  
B  
*13cm high, moulded 'R.LALIQUE FRANCE'*

**£6,000 - 8,000**

Exhibited at the Musée Lalique, France.



142

142

**RENÉ LALIQUE (FRENCH, 1860-1945)**

A 'Tête de Paon Car Mascot', designed in 1928  
clear glass, mould-blown, frosted and polished, seated in a chromed  
metal mount on a turned wood base; Marcilhac no. 1140  
24.5cm high, intaglio 'R.LALIQUE' and 'FRANCE' in groove

**£6,000 - 8,000**

Exhibited at the Musée Lalique, France.



143

143

**RENÉ LALIQUE (FRENCH, 1860-1945)**

A 'Pintade' Car Mascot, designed in 1929  
clear glass, mould-blown, frosted and polished, seated in a chromed  
metal base; Marcilhac no. 1164  
14cm high, moulded 'R.LALIQUE FRANCE' and wheel-cut  
'R.LALIQUE FRANCE'

**£3,000 - 5,000**

Exhibited at the Musée Lalique, France.

144

**RENÉ LALIQUE (FRENCH, 1860-1945)**

A 'Victoire' Car Mascot, designed in 1928  
clear glass, mould-blown, frosted and  
polished; Marcilhac no. 1147  
*26cm long, moulded 'R.LALIQUE'*

**£10,000 - 15,000**

Exhibited at the Musée Lalique, France, and  
is illustrated in *Poet of Glass, Musée Lalique,*  
2017, p.31. It is also illustrated in '*Lalique et  
l'art du voyage*', *L'Objet D'Art Hors-Séries,*  
Éditions Faton, Dijon Cedex, 2016, p.46 and  
the *Lalique & Wingen-Sur-Moder* publication,  
*Les Amis du Musée du Lalique*, July 2011,  
p.23.



145

**RENÉ LALIQUE (FRENCH, 1860-1945)**

A 'Epsom' Car Mascot, designed in 1929  
clear glass, mould-blown, frosted and polished, and seated in a  
chromed metal mount on a turned wood base; Marcilhac no. 1153  
*18.5cm long, moulded 'R.LALIQUE FRANCE'*

£4,000 - 6,000

Exhibited at the Musée Lalique, France.



145

146

**RENÉ LALIQUE (FRENCH, 1860-1945)**

A 'Coq Houdan' Car Mascot, designed in 1929  
clear glass, mould-blown, frosted and polished, Marcilhac no. 1161  
*19.8cm high, wheel engraved 'R.LALIQUE FRANCE'*

£3,000 - 5,000

Exhibited at the Musée Lalique, France.



146



147

**RENÉ LALIQUE (FRENCH, 1860-1945)**

A 'Tête de Paon' Car Mascot, designed in 1928

turquoise glass, mould-blown, frosted, polished, and with modern presentation case; Marcilhac no. 1140

17.8cm high, intaglio 'R.LALIQUE' and 'FRANCE' in groove

£15,000 - 25,000

Exhibited at the Musée Lalique, France.





148

**RENÉ LALIQUE (FRENCH, 1860-1945)**

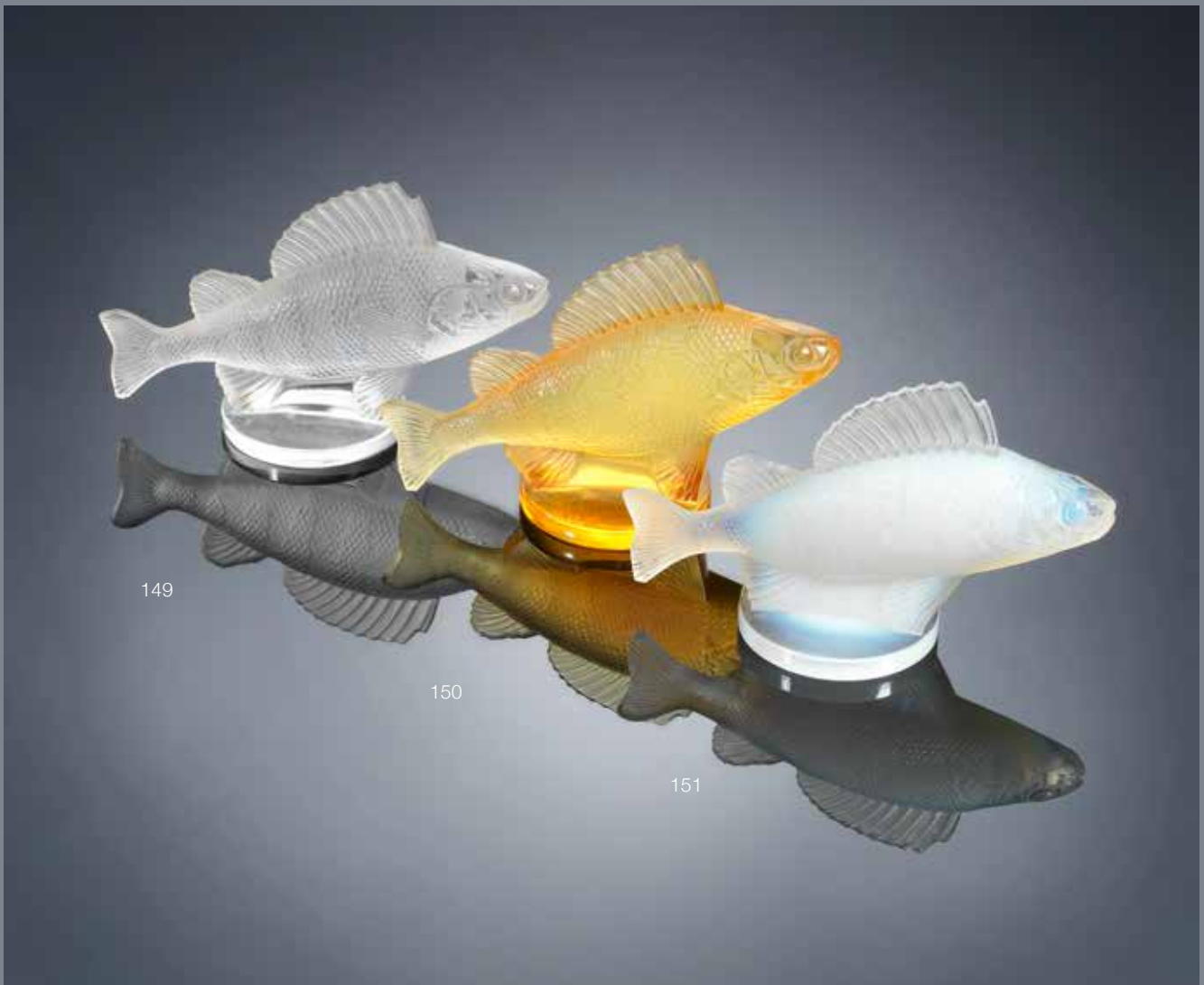
A 'Tête de Paon' Car Mascot, designed in 1928

blue glass, mould-blown, frosted, polished, and with modern presentation case; Marcilhac no. 1140

17.8cm high, intaglio 'R.LALIQUE' and 'FRANCE' in groove

£15,000 - 25,000

Exhibited at the Musée Lalique, France.



149

150

151

149

**RENÉ LALIQUE (FRENCH, 1860-1945)**

A 'Perche' Car Mascot, designed in 1929 clear glass, mould-blown, frosted and polished; Marcilhac no. 1158  
*16cm long, engraved 'Lalique' and moulded 'R.LALIQUE'*

£600 - 900

Exhibited at the Musée Lalique, France.

150

**RENÉ LALIQUE (FRENCH, 1860-1945)**

A 'Perche' Car Mascot, designed in 1929 butterscotch and opalescent glass, frosted and polished; Marcilhac no. 1158  
*10cm high, moulded 'R.LALIQUE' and wheel-cut 'R. LALIQUE FRANCE'*

£2,000 - 3,000

Exhibited at the Musée Lalique, France.

151

**RENÉ LALIQUE (FRENCH, 1860-1945)**

A 'Perche' Car Mascot, designed in 1929 opalescent glass, mould-blown, frosted and polished; Marcilhac no. 1158  
*16cm long, moulded 'R.LALIQUE', wheel-cut 'R LALIQUE FRANCE', and engraved 'No.1158'*

£1,200 - 1,800

Exhibited at the Musée Lalique, France.

152

**RENÉ LALIQUE (FRENCH, 1860-1960)**

A 'Archer' Car Mascot, designed in 1926  
clear glass, moulded, frosted and polished; Marcilhac no. 1126  
12cm high, intaglio 'R'LALIQUE', engraved 'FRANCE' and 'No.1126'

£1,000 - 1,500

Exhibited at the Musée Lalique, France.



152

153

**RENÉ LALIQUE (FRENCH, 1845-1960)**

A 'Hirondelle' Car Mascot, designed in 1928  
the glass of faint amethyst hue, mould-blown, frosted and polished;  
Marcilhac no. 1143  
15cm high, moulded 'R.LALIQUE FRANCE'

£1,200 - 1,800

Exhibited at the Musée Lalique, France, and is illustrated in 'Lalique et l'art du voyage', Objet D'Art Hors-Série, Éditions Faton, Dijon Cedex, 2016, p.4.



153



154

**RENÉ LALIQUE (FRENCH, 1860-1945)**

A 'Comète' Car Mascot, designed in 1925  
clear glass, mould-blown, frosted, polished, and seated in a period  
nickelled metal mount; Marcilhac no. 1123  
19cm long (in mount), moulded 'R.LALIQUE'

£8,000 - 12,000

Exhibited at the Musée Lalique, France.



155

**RENÉ LALIQUE (FRENCH, 1860-1945)**

A 'Cinq Chevaux' Car Mascot, designed in 1922  
the glass of amethyst hue, mould-blown, frosted and polished, and  
in a silvered metal mount on an oval striated marble base; Marcilhac  
no. 1122  
*base 25.5cm long, moulded 'R.LALIQUE' and wheel-cut 'FRANCE'*

£8,000 - 12,000

Exhibited at the Musée Lalique, France.



156

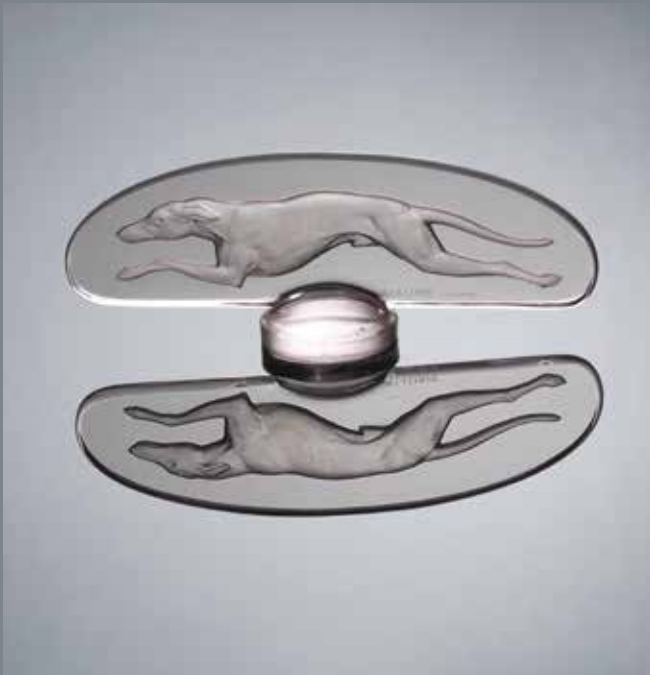
156

**RENÉ LALIQUE (FRENCH, 1860-1945)**

A 'Petite Libellule' Car Mascot, designed in 1928  
clear glass, mould-blown, frosted and polished; Marcilhac no. 1145  
16.2cm long, moulded 'LALIQUE FRANCE', and engraved 'R.Lalique  
France'

£3,000 - 5,000

Exhibited at the Musée Lalique, France.



157

157

**RENÉ LALIQUE (FRENCH, 1860-1945)**

A 'Levrier' Car Mascot, designed in 1928  
the glass of amethyst hue, mould-blown, frosted and polished;  
Marcilhac no.1141  
19.8cm long, intaglio 'R.LALIQUE FRANCE'

£3,000 - 5,000

Exhibited at the Musée Lalique, France, and is illustrated in Poet of  
Glass, Musée Lalique, p.6, 2017

158

**RENÉ LALIQUE (FRENCH, 1860-1945)**

A 'Tête de Bélier' Car Mascot, designed in 1928  
clear glass, mould-blown, frosted and polished; Marcilhac no. 1136  
9.5cm high, intaglio 'R.LALIQUE FRANCE'

£4,000 - 6,000

Exhibited at the Musée Lalique, France.



158

159

**RENÉ LALIQUE (FRENCH, 1860-1945)**

A 'Tête D'Épervier' Car Mascot, designed in 1928  
opalescent glass, mould-blown and polished; Marcilhac no. 1139  
6.5cm high, moulded 'LALIQUE FRANCE'

£3,000 - 5,000

Exhibited at the Musée Lalique, France.



159



160

160

**RENÉ LALIQUE (FRENCH, 1860-1945)**

A 'Tête D'Épervier' Car Mascot, designed in 1928  
topaz glass, mould-blown, frosted and polished, Marcilhac no. 1139  
6.5cm high, moulded 'LALIQUE FRANCE'

£2,000 - 3,000

Exhibited at the Musée Lalique, France.



161

161

**RENÉ LALIQUE (FRENCH, 1860-1945)**

A 'Grande Libellule' Car Mascot, designed in 1928  
clear glass, mould-blown, frosted and polished; Marcilhac no. 1145  
25.5cm high, moulded 'R.LALIQUE' and engraved 'R.Lalique France'

£4,000 - 6,000

Exhibited at the Musée Lalique, France, and an image of this piece was used for a souvenir postcard at the museum. It is also illustrated in 'Lalique et l'art du voyage', L'Objet D'Art Hors-Séries, Éditions Faton, Dijon Cedex, 2016, p.17. The lot includes a framed colour publicity photograph of the item from the exhibition, signed by the photographer.





162

**RENÉ LALIQUE (FRENCH, 1860-1945)**

A 'Vitesse' Car Mascot, designed in 1929  
opalescent, mould-blown, frosted and polished; Marcilhac no. 1160  
18.5cm high, moulded 'R.LALIQUE FRANCE'

**£15,000 - 25,000**

Exhibited at the Musée Lalique, France, and is illustrated on the cover of 'Lalique et l'art du voyage', L'Objet D'Art Hors-Séries, Éditions Faton, Dijon Cedex, 2016, and again on p.47. The lot includes a framed colour publicity photograph of the item from the exhibition, signed by the photographer.





163

**RENÉ LALIQUE (FRENCH, 1860-1945)**

A Very Rare 'Chrysis' Car Mascot, designed in 1931  
opalescent glass, mould-blown, frosted and polished; Marcilhac no.  
1183

*13.5cm high, stencilled 'R.LALIQUE FRANCE'*

**£30,000 - 50,000**

Exhibited at the Musée Lalique, France.



164

**RENÉ LALIQUE (FRENCH, 1860-1945)**

A Unique 'Frise Monnaie Du Pape' Cire Perdue Vase, designed in 1920  
clear glass, cast and polished, with grey staining; Marcilhac no. CP247  
14.5cm diameter, wheel engraved 'R LALIQUE' and numbered '159-20'

£25,000 - 35,000

An impression of a distinct thumbprint is preserved in the surface of the underside. See lot 60, Important Lalique from the Collection of Marvin Kagan and Diane Austin, Sotheby's, New York, 1 December 1993.





165



167



166



168

165

**RENÉ LALIQUE (FRENCH, 1860-1945)**

A 'Bandes de Roses' Vase, designed in 1919  
clear glass, mould-blown and frosted, with dark grey staining;  
Marcilhac no. 910  
23.6cm high, intaglio extended-L 'LALIQUE'

£700 - 900

166

**RENÉ LALIQUE (FRENCH, 1860-1945)**

A 'Téhéran (Décor Genre Gravure) Vase, designed in 1926  
clear glass, mould-blown, frosted, and polished, with grey staining;  
Marcilhac no.955  
7.5cm high, intaglio 'R.LALIQUE' and engraved 'France'

£1,000 - 1,500

167

**RENÉ LALIQUE (FRENCH, 1860-1945)**

A 'Beaulieu (Décor Gravé)' Vase, designed in 1925  
topaz glass, mould-blown and engraved; Marcilhac no. 960  
17cm high, engraved 'R.Lalique France No.960'

£700 - 900

168

**RENÉ LALIQUE (FRENCH, 1860-1945)**

An Early 'Dentelle' Vase, designed in 1912  
clear glass, mould-blown, frosted and polished, with sepia staining;  
Marcilhac no. 943  
19cm high, wheel-cut 'LALIQUE'

£800 - 1,200



169



171



170



172

169

**RENÉ LALIQUE (FRENCH, 1860-1945)**

A 'Camaret' Vase, designed in 1928  
cased opalescent glass, mould-blown, frosted and polished;  
Marcilhac no. 1010  
*13.8cm high, engraved 'R.Lalique France No. 1010'*

**£1,000 - 1,500**

Exhibited at the Musée Lalique, France.

170

**RENÉ LALIQUE (FRENCH, 1860-1945)**

A 'Bandes de Roses' Vase, designed in 1919  
clear glass, mould-blown, frosted and polished, with blue staining;  
Marcilhac no. 910  
*24cm high, intaglio 'R.LALIQUE'*

**£700 - 900**

171

**RENÉ LALIQUE (FRENCH, 1860-1945)**

A 'Acacia' Vase, designed in 1921  
pale topaz glass, mould-blown and frosted, with white staining;  
Marcilhac no. 949  
*20.5cm high, engraved 'R.Lalique France'*

**£800 - 1,200**

172

**RENÉ LALIQUE (FRENCH, 1860-1945)**

A 'Nivernais' Vase and a 'Meudon' Vase, designed in 1927 and 1933  
both of clear glass, mould-blown and polished; Marcilhac nos. 1005  
and 10-878  
*16.3cm and 13cm high, both engraved 'R.LALIQUE FRANCE'*

**£800 - 1,200**



173

173

**RENÉ LALIQUE (FRENCH, 1860-1945)**

An Early 'Sirènes Avec Bouchon Figurine' Vase, designed in 1920  
mould-blown and frosted, with grey staining; Marcihac no. 883  
*total height 35.8cm high, engraved 'Lalique', vase and figure incised  
'3'*

£5,000 - 8,000

174

**RENÉ LALIQUE (FRENCH, 1860-1945)**

A 'Frise Aigles' Vase, designed in 1911  
clear glass, mould-blown and frosted, with  
grey staining; Marcilhac no. 10-925  
31.5cm high, stencilled 'R.LALIQUE'

£6,000 - 8,000



174



(detail)



(detail)

For details of the charges payable in addition to the final Hammer Price of each Lot please refer to paragraphs 7 & 8 of the Notice to Bidders at the back of the catalogue.



175

175

**RENÉ LALIQUE (FRENCH, 1860-1945)**

A 'Pigeons' Vase, designed in 1924  
ice blue glass, mould-blown, frosted and  
polished, with white staining; Marcilhac no.  
939

13cm high, wheel-cut 'R.LALIQUE'

£4,000 - 6,000



176

176

**RENÉ LALIQUE (FRENCH, 1860-1945)**

A 'Archers' Vase, designed in 1921  
mould-blown, frosted and polished, with grey  
staining; Marcilhac no. 893

26cm high, intaglio 'R.LALIQUE' and  
engraved 'R.Lalique France'

£3,000 - 5,000



177

**RENÉ LALIQUE (FRENCH, 1860-1945)**

A 'Ronsard' Vase, designed in 1926  
pale topaz glass, mould-blown, applied with  
a figure to either side, frosted and polished,  
with white staining; Marcilhac no. 982  
21cm high, intaglio *R.LALIQUE*

£2,000 - 3,000



177

178

**RENÉ LALIQUE (FRENCH, 1860-1945)**

A 'Bouchardon' Vase, designed in 1926  
pale topaz glass, mould-blown, applied with  
a figure to either side, frosted and polished,  
with white staining; Marcilhac no. 981  
12.5cm high, intaglio *'R.LALIQUE*.

£2,000 - 3,000



178



179

179

**RENÉ LALIQUE (FRENCH, 1860-1945)**

A 'Deux Sauterelles' Vase, designed in 1923  
clear glass, mould-blown, frosted and polished; Marcilhac no. 915  
23cm high, engraved 'R.Lalique'

£1,800 - 2,200



180

180

**RENÉ LALIQUE (FRENCH, 1860-1945)**

A 'Canards' Vase, designed in 1931  
cased yellow amber and opalescent glass, mould-blown, frosted and  
polished, with white staining; Marcilhac no. 1076  
13.5cm high, stencilled 'R.LALIQUE FRANCE'

£1,200 - 1,500

181

**RENÉ LALIQUE (FRENCH, 1860-1945)**

An Early 'Fontaine, Couvert' Vase, designed in 1912  
clear glass, mould-blown, frosted and polished, with sepia staining;  
Marcilhac no. 906  
*15.5cm high, engraved 'Lalique'*

£1,000 - 1,500



181

182

**RENÉ LALIQUE (FRENCH, 1860-1945)**

A 'Palmes' Vase, designed in 1923  
cased yellow amber and opalescent glass, mould-blown, frosted and  
polished; Marcilhac no. 952  
*11.5cm high, moulded 'R.LALIQUE MADE IN FRANCE'*

£1,000 - 1,500



182



183

183

**RENÉ LALIQUE (FRENCH, 1860-1945)**

A 'Bordure Bluets' Vase, designed in 1913 clear glass, mould-blown, frosted and polished, with blue staining; Marcilhac no. 907

17cm high, wheel-cut 'R.LALIQUE' and engraved 'France'

£1,000 - 1,500



184

184

**RENÉ LALIQUE (FRENCH, 1860-1945)**

A 'Courges' Vase, designed in 1914 the glass graduating from a clear to amethyst hue, mould-blown, frosted and polished, with white staining; Marcilhac no. 900

19cm high, intaglio extended-L 'LALIQUE'

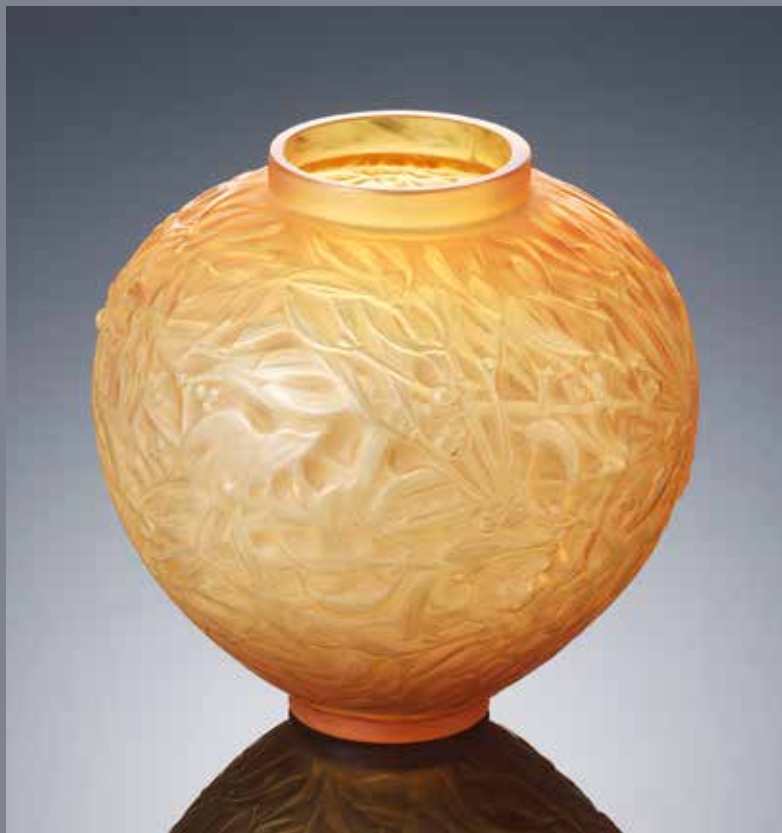
£1,500 - 2,500

185

**RENÉ LALIQUE (FRENCH, 1860-1945)**

A 'Gui' vase, designed in 1920  
amber glass, mould-blown, frosted and  
polished, with traces of sepia staining;  
Marcilhac no. 948  
16.5cm high, engraved 'R. Lalique'

£1,000 - 1,500



185

186

**RENÉ LALIQUE (FRENCH, 1860-1945)**

An Early 'Deux Moineaux Dormant' Vase,  
designed in 1920  
clear glass, mould-blown, frosted and  
polished, with sepia staining; Marcilhac no.  
911  
20cm high, engraved 'Lalique'

£1,000 - 1,500



186



187

187

**RENÉ LALIQUE (FRENCH, 1860-1945)**

A 'Fougères' Vase, designed in 1913  
clear glass, mould-blown, frosted and  
polished, with green staining; Marcilhac no.  
923

15.4cm high, moulded and wheel-cut  
'R.LALIQUE'

£1,000 - 1,500



188

188

**RENÉ LALIQUE (FRENCH, 1860-1945)**

An Early 'Bordure Épines' Vase, designed in  
1913  
clear glass, mould-blown, frosted and  
polished, with blue staining; Marcilhac no.  
908

19.8cm high, engraved 'Lalique'

£1,000 - 1,500

189

**RENÉ LALIQUE (FRENCH, 1860-1945)**

A 'Monnaie du Pape' Vase, designed in 1914  
clear glass, mould-blown, frosted and  
polished, with grey staining; Marcilhac no.  
897  
23.3cm high, intaglio 'R.LALIQUE'

£2,000 - 3,000



189

190

**RENÉ LALIQUE (FRENCH, 1860-1945)**

A 'Malesherbes' Vase, designed in 1927  
deep amber glass, mould-blown, frosted and  
polished; Marcilhac no. 1014  
23cm high, engraved 'R.LALIQUE FRANCE  
No.1014'

£2,000 - 3,000



190



191

191

**RENÉ LALIQUE (FRENCH, 1860-1945)**

A 'Montargis' Vase, designed in 1929 clear glass, mould-blown frosted and polished, with grey staining; Marcilhac no. 1022

20.5cm high, intaglio 'R.LALIQUE FRANCE' and engraved 'R.Lalique France'

£2,000 - 3,000



192

192

**RENÉ LALIQUE (FRENCH, 1860-1945)**

A 'Ormeaux' Vase, designed in 1926 deep amber glass, mould-blown, frosted and polished, with white staining; Marcilhac no. 984

18cm high, engraved 'R.LALIQUE FRANCE No.984'

£2,000 - 3,000



193

**RENÉ LALIQUE (FRENCH, 1860-1945)**

A 'Senart' vase, designed in 1934  
cased opalescent glass, mould-blown,  
frosted and polished, with blue staining;  
Marcilhac no. 1098  
21.2cm high, stencilled 'R.LALIQUE  
FRANCE'

£2,000 - 3,000



193

194

**RENÉ LALIQUE (FRENCH, 1860-1945)**

An Early 'Soleil' Vase, designed in 1913  
clear glass, mould-blown, frosted, and  
polished, with sepia staining and brown  
enamelling; Marcilhac no. 926  
20.3cm high, moulded 'LALIQUE'

£2,000 - 3,000



194



195

195

**RENÉ LALIQUE (FRENCH, 1860-1945)**

A 'Lutteurs' Vase, designed in 1914  
clear glass, mould-blown, frosted and  
polished, with sepia staining: Marcilhac no.  
172

13.5cm high, wheel-engraved 'LALIQUE'

£3,000 - 5,000



196

196

**RENÉ LALIQUE (FRENCH, 1860-1945)**

An Early 'Sirènes et Cabochons' Vase,  
designed in 1914  
mould-blown, frosted and polished, with grey  
staining; Marcilhac no. 899  
20.4cm high, moulded 'R.LALIQUE' and  
engraved 'Lalique'

£3,000 - 5,000

197

**RENÉ LALIQUE (FRENCH, 1860-1945)**

A 'Cigognes' Vase, designed in 1926  
clear glass, mould-blown, frosted and  
polished, with sepia staining;  
Marcilhac no. 965  
18cm high, intaglio 'R.LALIQUE'

£4,000 - 6,000



197

198

**RENÉ LALIQUE (FRENCH, 1860-1945)**

A 'Koudour' vase, designed in 1926  
clear glass, mould-blown and polished, with  
black enamelling;  
Marcilhac no. 968  
17.5cm high, intaglio 'R.LALIQUE' and  
engraved 'R.Lalique France'

£2,500 - 3,500



198



199

199

**RENÉ LALIQUE (FRENCH, 1860-1945)**

A 'Sauterelles' Vase, designed in 1913  
mould-blown, frosted and polished, with blue  
and lime green staining, Marcilhac no. 888  
27cm high, engraved 'R.Lalique France'

£4,000 - 6,000

Exhibited at the Musée Lalique, France, and  
is illustrated in *Poet Of Glass*, Musée Lalique,  
2017, p.16. It is also illustrated in *Zoom Sur  
Lalique*, Denise Bloch and Rachel Quinet,  
Éditions Association d'idées, Collection  
Zoom, Nancy, p.44.



200

200

**RENÉ LALIQUE (FRENCH, 1860-1945)**

A 'Ronces' vase, designed in 1921  
red glass, mould-blown, frosted and  
polished, with white staining; Marcilhac no.  
946  
23.2cm high, moulded 'R. LALIQUE'

£3,000 - 5,000



201

**RENÉ LALIQUE (FRENCH, 1860-1945)**

A 'Grande Boule Lierre' vase, designed in 1919

clear glass, mould-blown, frosted and polished, with green and sepia staining;

Marcilhac no. 877

35cm high, stencilled 'R.LALIQUE'

£18,000 - 22,000

202

**RENÉ LALIQUE (FRENCH, 1860-1945)**

A 'Sauterelles' Vase, designed in 1913  
cased opalescent glass, mould-blown frosted and polished;  
Marcilhac no. 888  
27cm high, engraved 'R.Lalique France'

£12,000 - 15,000





203

**RENÉ LALIQUE (FRENCH, 1860-1945)**

A 'Lézards et Bluets' Vase, designed in 1913  
mould-blown, frosted and polished, with grey  
staining; Marcihac no. 879

*33.5cm high, moulded 'R.LALIQUE' and  
engraved 'R.Lalique France No.879'*

£6,000 - 8,000

For details of the charges payable in addition to the final Hammer Price of each Lot  
please refer to paragraphs 7 & 8 of the Notice to Bidders at the back of the catalogue.



204

**RENÉ LALIQUE (FRENCH, 1860-1945)**

A 'Borromée' Vase, designed in 1928  
cased opalescent glass, mould-blown and frosted, with grey staining;  
Marcilhac no. 1017  
23cm high, engraved 'R.Lalique France'

£6,000 - 8,000





205

**RENÉ LALIQUE (FRENCH, 1860-1945)**

A 'Hirondelles' Vase, designed in 1919  
clear glass, mould-blown, frosted and polished, with blue staining;  
Marcilhac no. 889  
23.5cm. high, intaglio extended-L 'LALIQUE' and engraved  
'R.Lalique France'

£8,000 - 12,000



206

**RENÉ LALIQUE (FRENCH, 1860-1945)**

An Early 'Inséparables' Vase, designed in 1919  
clear glass, mould-blown, frosted and polished; Marcilhac no. 887  
34.5cm high, moulded 'R.LALIQUE' and engraved 'Lalique'

£6,000 - 9,000



207

**RENÉ LALIQUE (FRENCH, 1860-1945)**

A 'Camées' Vase, designed in 1923

clear glass, mould-blown, frosted and polished, with green staining;

Marcilhac no.891

25.5cm high, moulded 'R.LALIQUE' and engraved 'R.Lalique France No.891'

£6,000 - 9,000



208

**RENÉ LALIQUE (FRENCH, 1860-1945)**

An Early 'Quatre Groupes De Lézards' Vase, designed in 1912  
mould-blown, frosted and polished, with sepia staining; Marcilhac  
no. 898

*31.5cm high, engraved 'Lalique'*

£5,000 - 8,000



209

**RENÉ LALIQUE (FRENCH, 1860-1945)**

A 'Gros Scarabées' Vase, designed in 1923  
deep amber glass, mould-blown, frosted and polished; Marcilhac  
no. 892  
29cm high, moulded 'R.LALIQUE'

£15,000 - 25,000

For details of the charges payable in addition to the final Hammer Price of each Lot  
please refer to paragraphs 7 & 8 of the Notice to Bidders at the back of the catalogue.



210

**RENÉ LALIQUE (FRENCH, 1860-1945)**

A 'Alicante' Vase, designed in 1927  
triple cased jade green glass with opalescent core, mould-blown,  
frosted and polished, with grey staining; Marcilhac no. 998  
215.3cm high, engraved 'R.Lalique France'

£20,000 - 30,000

211

**PAUL SELLEY**

Portrait of René Jules Lalique  
oil on canvas board, framed  
board 25cm x 30cm, signed 'Lightspeed'

The artist specialises in political, historical and society portraits in oil. He was recently exhibited at the Royal Academy Summer Exhibition, curated by Grayson Perry. His portrait of Jacob Rees-Mogg was exhibited in the main gallery alongside pieces by Royal Academicians as well as other prominent artists such as Banksy.

John Nemeth commissioned this work directly from the artist and it was completed in November 2018. It was decided that this original painting would be auctioned for charity as the final lot in this auction. A further 5 examples of this work will be created using the same technique as an individually numbered limited edition.



211

## About the charities

### ALZHEIMER'S SOCIETY

Dementia devastates lives. By 2021, 1 million people will be living with the condition. But dementia won't win. Until the day we find a cure, Alzheimer's Society will be here for anyone affected by dementia - wherever they are, whatever they're going through.

We're the UK's leading dementia charity, working tirelessly to challenge perceptions, fund research and improve care and support. We are transforming society so that everyone with dementia is accepted and able to live in their communities without fear and prejudice. Finding a cure may be a long way off. But a dementia-friendly society can happen today.



### PARKINSON'S UK

Every hour, two people in the UK are told they have Parkinson's - and, because we're here, no-one has to face it alone.

We bring people with Parkinson's, and their carers and families together via our website, network of local groups and free, confidential helpline. Specialist nurses, supporters and staff provide information and training on every aspect of the condition.



## NOTICE TO BIDDERS

This notice is addressed by *Bonhams* to any person who may be interested in a *Lot*, including *Bidders* and potential *Bidders* (including any eventual *Buyer* of the *Lot*). For ease of reference we refer to such persons as "*Bidders*" or "you". Our List of Definitions and Glossary is incorporated into this *Notice to Bidders*. It is at Appendix 3 at the back of the *Catalogue*. Where words and phrases are used in this notice which are in the List of Definitions, they are printed in italics.

IMPORTANT: Additional information applicable to the *Sale* may be set out in the *Catalogue* for the *Sale*, in an insert in the *Catalogue* and/or in a notice displayed at the *Sale* venue and you should read them as well. Announcements affecting the *Sale* may also be given out orally before and during the *Sale* without prior written notice. You should be alert to the possibility of changes and ask in advance of bidding if there have been any.

### 1. OUR ROLE

In its role as *Auctioneer* of *Lots*, *Bonhams* acts solely for and in the interests of the *Seller*. *Bonhams'* job is to sell the *Lot* at the highest price obtainable at the *Sale* to a *Bidder*. *Bonhams* does not act for *Buyers* or *Bidders* in this role and does not give advice to *Buyers* or *Bidders*. When it or its staff make statements about a *Lot* or, if *Bonhams* provides a *Condition Report* on a *Lot* it is doing that on behalf of the *Seller* of the *Lot*. *Bidders* and *Buyers* who are themselves not expert in the *Lots* are strongly advised to seek and obtain independent advice on the *Lots* and their value before bidding for them. The *Seller* has authorised *Bonhams* to sell the *Lot* as its agent on its behalf and, save where we expressly make it clear to the contrary, *Bonhams* acts only as agent for the *Seller*. Any statement or representation we make in respect of a *Lot* is made on the *Seller's* behalf and, unless *Bonhams* sells a *Lot* as principal, not on our behalf and any *Contract for Sale* is between the *Buyer* and the *Seller* and not with us. If *Bonhams* sells a *Lot* as principal this will either be stated in the *Catalogue* or an announcement to that effect will be made by the *Auctioneer*, or it will be stated in a notice at the *Sale* or an insert in the *Catalogue*.

*Bonhams* does not owe or undertake or agree to any duty or responsibility to you in contract or tort (whether direct, collateral, express, implied or otherwise). If you successfully bid for a *Lot* and buy it, at that stage *Bonhams* does enter into an agreement with the *Buyer*. The terms of that contract are set out in our *Buyer's Agreement*, which you will find at Appendix 2 at the back of the *Catalogue*. This will govern *Bonhams'* relationship with the *Buyer*.

### 2. LOTS

Subject to the *Contractual Description* printed in bold letters in the *Entry* about the *Lot* in the *Catalogue* (see paragraph 3 below), *Lots* are sold to the *Buyer* on an "as is" basis, with all faults and imperfections. Illustrations and photographs contained in the *Catalogue* (other than photographs forming part of the *Contractual Description*) or elsewhere of any *Lots* are for identification purposes only. They may not reveal the true condition of the *Lot*. A photograph or illustration may not reflect an accurate reproduction of the colour(s) of the *Lot*. *Lots* are available for inspection prior to the *Sale* and it is for you to satisfy yourself as to each and every aspect of a *Lot*, including its authorship, attribution, condition, provenance, history, background, authenticity, style, period, age, suitability, quality, roadworthiness (if relevant), origin, value and estimated selling price (including the *Hammer Price*). It is your responsibility to examine any *Lot* in which you are interested. It should be remembered that the actual condition of a *Lot* may not be as good as that indicated by its outward appearance. In particular, parts may have been replaced or renewed and *Lots* may not be authentic or of satisfactory quality; the inside of a *Lot* may not be visible and may not be original or may be damaged, as for example where it is covered by upholstery or material. Given the age of many *Lots* they may have been damaged and/or repaired and you should not assume that a *Lot* is in good condition. Electronic or mechanical parts may not operate or may not comply with current statutory requirements. You should not assume that electrical items designed to operate on mains electricity will be suitable for connection to the mains electricity supply and you should obtain a report from a qualified electrician on their status before doing so. Such items which are unsuitable for connection

are sold as items of interest for display purposes only. If you yourself do not have expertise regarding a *Lot*, you should consult someone who does to advise you. We can assist in arranging facilities for you to carry out or have carried out more detailed inspections and tests. Please ask our staff for details.

Any person who damages a *Lot* will be held liable for the loss caused.

### 3. DESCRIPTIONS OF LOTS AND ESTIMATES

#### **Contractual Description of a Lot**

The *Catalogue* contains an *Entry* about each *Lot*. Each *Lot* is sold by its respective *Seller* to the *Buyer* of the *Lot* as corresponding only with that part of the *Entry* which is printed in bold letters and (except for the colour, which may be inaccurately reproduced) with any photograph of the *Lot* in the *Catalogue*. The remainder of the *Entry*, which is not printed in bold letters, represents *Bonhams'* opinion (given on behalf of the *Seller*) about the *Lot* only and is not part of the *Contractual Description* in accordance with which the *Lot* is sold by the *Seller*.

#### **Estimates**

In most cases, an *Estimate* is printed beside the *Entry*. *Estimates* are only an expression of *Bonhams'* opinion made on behalf of the *Seller* of the range where *Bonhams* thinks the *Hammer Price* for the *Lot* is likely to fall; it is not an *Estimate* of value. It does not take into account any VAT or *Buyer's Premium* payable or any other fees payable by the *Buyer*, which are detailed in paragraph 7 of the *Notice to Bidders*, below. *Lots* can in fact sell for *Hammer Prices* below and above the *Estimate*. Any *Estimate* should not be relied on as an indication of the actual selling price or value of a *Lot*. *Estimates* are in the currency of the *Sale*.

#### **Condition Reports**

In respect of most *Lots*, you may ask for a *Condition Report* on its physical condition from *Bonhams*. If you do so, this will be provided by *Bonhams* on behalf of the *Seller* free of charge. *Bonhams* is not entering into a contract with you in respect of the *Condition Report* and accordingly does not assume responsibility to you in respect of it. Nor does the *Seller* owe or agree to owe you as a *Bidder* any obligation or duty in respect of this free report about a *Lot*, which is available for your own inspection or for inspection by an expert instructed by you. However, any written *Description* of the physical condition of the *Lot* contained in a *Condition Report* will form part of the *Contractual Description* of the *Lot* under which it is sold to any *Buyer*.

#### **The Seller's responsibility to you**

The *Seller* does not make or agree to make any representation of fact or contractual promise, *Guarantee* or warranty and undertakes no obligation or duty, whether in contract or in tort (other than to the eventual *Buyer* as set out above), in respect of the accuracy or completeness of any statement or representation made by him or on his behalf, which is in any way descriptive of any *Lot* or as to the anticipated or likely selling price of any *Lot*. Other than as set out above, no statement or representation in any way descriptive of a *Lot* or any *Estimate* is incorporated into any *Contract for Sale* between a *Seller* and a *Buyer*.

#### **Bonhams' responsibility to you**

You have the opportunity of examining the *Lot* if you want to and the *Contract for Sale* for a *Lot* is with the *Seller* and not with *Bonhams*; *Bonhams* acts as the *Seller's* agent only (unless *Bonhams* sells the *Lot* as principal).

*Bonhams* undertakes no obligation to you to examine, investigate or carry out any tests, either in sufficient depth or at all, on each *Lot* to establish the accuracy or otherwise of any *Descriptions* or opinions given by *Bonhams*, or by any person on *Bonhams'* behalf, whether in the *Catalogue* or elsewhere.

You should not suppose that such examinations, investigations or tests have occurred.

*Bonhams* does not make or agree to make any representation of fact, and undertakes no obligation or duty (whether in contract or tort) in respect of the accuracy or completeness of any statement or representation made by *Bonhams* or on *Bonhams'* behalf which is in any way descriptive of any *Lot*

or as to the anticipated or likely selling price of any *Lot*. No statement or representation by *Bonhams* or on its behalf in any way descriptive of any *Lot* or any *Estimate* is incorporated into our *Buyer's Agreement*.

#### **Alterations**

*Descriptions* and *Estimates* may be amended at *Bonhams'* discretion from time to time by notice given orally or in writing before or during a *Sale*.

THE *LOT* IS AVAILABLE FOR INSPECTION AND YOU MUST FORM YOUR OWN OPINION IN RELATION TO IT. YOU ARE STRONGLY ADVISED TO EXAMINE ANY *LOT* OR HAVE IT EXAMINED ON YOUR BEHALF BEFORE THE *SALE*.

### 4. CONDUCT OF THE SALE

Our *Sales* are public auctions which persons may attend and you should take the opportunity to do so. We do reserve the right at our sole discretion to refuse admission to our premises or to any *Sale* without stating a reason. We have complete discretion as to whether the *Sale* proceeds, whether any *Lot* is included in the *Sale*, the manner in which the *Sale* is conducted and we may offer *Lots for Sale* in any order we choose notwithstanding the numbers given to *Lots* in the *Catalogue*. You should therefore check the date and starting time of the *Sale*, whether there have been any withdrawals or late entries. Remember that withdrawals and late entries may affect the time at which a *Lot* you are interested in is put up for *Sale*. We have complete discretion to refuse any bid, to nominate any bidding increment we consider appropriate, to divide any *Lot*, to combine two or more *Lots*, to withdraw any *Lot* from a *Sale* and, before the *Sale* has been closed, to put up any *Lot* for auction again. Auction speeds can exceed 100 *Lots* to the hour and bidding increments are generally about 10%. However these do vary from *Sale* to *Sale* and from *Auctioneer* to *Auctioneer*. Please check with the department organising the *Sale* for advice on this. Where a *Reserve* has been applied to a *Lot*, the *Auctioneer* may, in his absolute discretion, place bids (up to an amount not equalling or exceeding such *Reserve*) on behalf of the *Seller*. We are not responsible to you in respect of the presence or absence of any *Reserve* in respect of any *Lot*. If there is a *Reserve* it will normally be no higher than the lower figure for any *Estimate* in the *Catalogue*, assuming that the currency of the *Reserve* has not fluctuated adversely against the currency of the *Estimate*. The *Buyer* will be the *Bidder* who makes the highest bid acceptable to the *Auctioneer* for any *Lot* (subject to any applicable *Reserve*) to whom the *Lot* is knocked down by the *Auctioneer* at the fall of the *Auctioneer's* hammer. Any dispute as to the highest acceptable bid will be settled by the *Auctioneer* in his absolute discretion. All bids tendered will relate to the actual *Lot* number announced by the *Auctioneer*. An electronic currency converter may be used at the *Sale*. This equipment is provided as a general guide as to the equivalent amount in certain currencies of a given bid. We do not accept any responsibility for any errors which may occur in the use of the currency converter. We may use video cameras to record the *Sale* and may record telephone calls for reasons of security and to assist in solving any disputes which may arise in relation to bids made at the *Sale*. At some *Sales*, for example, jewellery *Sales*, we may use screens on which images of the *Lots* will be projected. This service is provided to assist viewing at the *Sale*. The image on the screen should be treated as an indication only of the current *Lot*. It should be noted that all bids tendered will relate to the actual *Lot* number announced by the *Auctioneer*. We do not accept any responsibility for any errors which may occur in the use of the screen.

### 5. BIDDING

We do not accept bids from any person who has not completed and delivered to us one of our *Bidding Forms*, either our *Bidder Registration Form*, *Absentee Bidding Form* or *Telephone Bidding Form*. You will be asked for proof of identity, residence and references, which, when asked for, you must supply if your bids are to be accepted by us. Please bring your passport, driving licence (or similar photographic proof of identity) and proof of address. We may request a deposit from you before allowing you to bid. We may refuse entry to a *Sale* to any person even if that person has completed a *Bidding Form*.



## Bidding in person

You should come to our *Bidder* registration desk at the *Sale* venue and fill out a *Bidder* Registration Form on (or, if possible, before) the day of the *Sale*. The bidding number system is sometimes referred to as "paddle bidding". You will be issued with a large card (a "paddle") with a printed number on it. This will be attributed to you for the purposes of the *Sale*. Should you be a successful *Bidder* you will need to ensure that your number can be clearly seen by the *Auctioneer* and that it is your number which is identified as the *Buyer's*. You should not let anyone else use your paddle as all *Lots* will be invoiced to the name and address given on your *Bidder* Registration Form. Once an invoice is issued it will not be changed. If there is any doubt as to the *Hammer Price* of, or whether you are the successful *Bidder* of, a particular *Lot*, you must draw this to the attention of the *Auctioneer* before the next *Lot* is offered for *Sale*. At the end of the *Sale*, or when you have finished bidding please return your paddle to the *Bidder* registration desk.

## Bidding by telephone

If you wish to bid at the *Sale* by telephone, please complete a Telephone *Bidding Form*, which is available from our offices or in the *Catalogue*. Please then return it to the office responsible for the *Sale* at least 24 hours in advance of the *Sale*. It is your responsibility to check with our Bids Office that your bid has been received. Telephone calls will be recorded. The telephone bidding facility is a discretionary service and may not be available in relation to all *Lots*. We will not be responsible for bidding on your behalf if you are unavailable at the time of the *Sale* or if the telephone connection is interrupted during bidding. Please contact us for further details.

## Bidding by post or fax

Absentee *Bidding Forms* can be found in the back of this *Catalogue* and should be completed and sent to the office responsible for the *Sale*. It is in your interests to return your form as soon as possible, as if two or more *Bidders* submit identical bids for a *Lot*, the first bid received takes preference. In any event, all bids should be received at least 24 hours before the start of the *Sale*. Please check your Absentee *Bidding Form* carefully before returning it to us, fully completed and signed by you. It is your responsibility to check with our Bids Office that your bid has been received. This additional service is complimentary and is confidential. Such bids are made at your own risk and we cannot accept liability for our failure to receive and/or place any such bids. All bids made on your behalf will be made at the lowest level possible subject to *Reserves* and other bids made for the *Lot*. Where appropriate your bids will be rounded down to the nearest amount consistent with the *Auctioneer's* bidding increments. New *Bidders* must also provide proof of identity and address when submitting bids. Failure to do this will result in your bid not being placed.

## Bidding via the internet

Please visit our *Website* at <http://www.bonhams.com> for details of how to bid via the internet.

## Bidding through an agent

Bids will be accepted as placed on behalf of the person named as the principal on the *Bidding Form* although we may refuse to accept bids from an agent on behalf of a principal and will require written confirmation from the principal confirming the agent's authority to bid. Nevertheless, as the *Bidding Form* explains, any person placing a bid as agent on behalf of another (whether or not he has disclosed that fact or the identity of his principal) will be jointly and severally liable with the principal to the *Seller* and to *Bonhams* under any contract resulting from the acceptance of a bid. Subject to the above, please let us know if you are acting on behalf of another person when bidding for *Lots* at the *Sale*.

Equally, please let us know if you intend to nominate another person to bid on your behalf at the *Sale* unless this is to be carried out by us pursuant to a Telephone or Absentee *Bidding Form* that you have completed. If we do not approve the agency arrangements in writing before the *Sale*, we are entitled to assume that the person bidding at the *Sale* is bidding on his own behalf. Accordingly, the person bidding at the *Sale* will be the *Buyer* and will be liable to pay the *Hammer Price* and

*Buyer's Premium* and associated charges. If we approve the identity of your client in advance, we will be in a position to address the invoice to your principal rather than you. We will require proof of the agent's client's identity and residence in advance of any bids made by the agent on his behalf. Please refer to our *Conditions of Business* and contact our Customer Services Department for further details.

## 6. CONTRACTS BETWEEN THE BUYER AND SELLER AND THE BUYER AND BONHAMS

On the *Lot* being knocked down to the *Buyer*, a *Contract for Sale* of the *Lot* will be entered into between the *Seller* and the *Buyer* on the terms of the *Contract for Sale* set out in Appendix 1 at the back of the *Catalogue*. You will be liable to pay the *Purchase Price*, which is the *Hammer Price* plus any applicable *VAT*. At the same time, a separate contract is also entered into between us as *Auctioneers* and the *Buyer*. This is our *Buyer's Agreement*, the terms of which are set out in Appendix 2 at the back of the *Catalogue*. Please read the terms of the *Contract for Sale* and our *Buyer's Agreement* contained in the *Catalogue* in case you are the successful *Bidder*. We may change the terms of either or both of these agreements in advance of their being entered into, by setting out different terms in the *Catalogue* and/or by placing an insert in the *Catalogue* and/or by notices at the *Sale* venue and/or by oral announcements before and during the *Sale*. You should be alert to this possibility of changes and ask if there have been any.

## 7. BUYER'S PREMIUM AND OTHER CHARGES PAYABLE BY THE BUYER

Under the *Buyer's Agreement*, a premium (the *Buyer's Premium*) is payable to us by the *Buyer* in accordance with the terms of the *Buyer's Agreement* and at rates set out below, calculated by reference to the *Hammer Price* and payable in addition to it. For this *Sale* the following rates of *Buyer's Premium* will be payable by *Buyers* of *Lots*:

25% up to £175,000 of the *Hammer Price*  
20% from £175,001 to £3,000,000 of the *Hammer Price*  
12.5% from £3,000,001 of the *Hammer Price*

Storage and handling charges may also be payable by the *Buyer* as detailed on the specific *Sale* Information page at the front of the *catalogue*.

The *Buyer's Premium* and all other charges payable to us by the *Buyer* are subject to *VAT* at the prevailing rate, currently 20%.

*VAT* may also be payable on the *Hammer Price* of the *Lot*, where indicated by a symbol beside the *Lot* number. See paragraph 8 below for details.

On certain *Lots*, which will be marked "AR" in the *Catalogue* and which are sold for a *Hammer Price* of €1,000 or greater (converted into the currency of the *Sale* using the European Central Bank Reference rate prevailing on the date of the *Sale*), the *Additional Premium* will be payable to us by the *Buyer* to cover our *Expenses* relating to the payment of royalties under the Artists Resale Right Regulations 2006. The *Additional Premium* will be a percentage of the amount of the *Hammer Price* calculated in accordance with the table below, and shall not exceed €12,500 (converted into the currency of the *Sale* using the European Central Bank Reference rate prevailing on the date of the *Sale*).

<i>Hammer Price</i>	Percentage amount
From €0 to €50,000	4%
From €50,000.01 to €200,000	3%
From €200,000.01 to €350,000	1%
From €350,000.01 to €500,000	0.5%
Exceeding €500,000	0.25%

## 8. VAT

The prevailing rate of *VAT* at the time of going to press is 20%, but this is subject to government change and the rate payable will be the rate in force on the date of the *Sale*.

The following symbols, shown beside the *Lot* number, are used to denote that *VAT* is due on the *Hammer Price* and *Buyer's Premium*:

- † *VAT* at the prevailing rate on *Hammer Price* and *Buyer's Premium*
- Ω *VAT* on imported items at the prevailing rate on *Hammer Price* and *Buyer's Premium*
- \* *VAT* on imported items at a preferential rate of 5% on *Hammer Price* and the prevailing rate on *Buyer's Premium*
- G Gold bullion exempt from *VAT* on the *Hammer Price* and subject to *VAT* at the prevailing rate on the *Buyer's Premium*
- Zero rated for *VAT*, no *VAT* will be added to the *Hammer Price* or the *Buyer's Premium*
- α *Buyers* from within the EU: *VAT* is payable at the prevailing rate on just the *Buyer's Premium* (NOT the *Hammer Price*). *Buyers* from outside the EU: *VAT* is payable at the prevailing rate on both *Hammer Price* and *Buyer's Premium*. If a *Buyer*, having registered under a non-EU address, decides that the item is not to be exported from the EU, then he should advise *Bonhams* immediately.

In all other instances no *VAT* will be charged on the *Hammer Price*, but *VAT* at the prevailing rate will be added to *Buyer's Premium* which will be invoiced on a *VAT* inclusive basis.

## 9. PAYMENT

It is of critical importance that you ensure that you have readily available funds to pay the *Purchase Price* and the *Buyer's Premium* (plus *VAT* and any other charges and *Expenses* to us) in full before making a bid for the *Lot*. If you are a successful *Bidder*, payment will be due to us by 4.30 pm on the second working day after the *Sale* so that all sums are cleared by the eighth working day after the *Sale*. Payments made by anyone other than the registered *Buyer* will not be accepted. *Bonhams* reserves the right to vary the terms of payment at any time.

### Bonhams' preferred payment method is by bank transfer.

You may electronically transfer funds to our *Trust Account*. If you do so, please quote your paddle number and invoice number as the reference. Our *Trust Account* details are as follows:

Bank: National Westminster Bank Plc  
Address: PO Box 4RY  
250 Regent Street  
London W1A 4RY  
Account Name: Bonhams 1793 Limited Trust Account  
Account Number: 25563009  
Sort Code: 56-00-27  
IBAN Number: GB 33 NWBK 560027 25563009

If paying by bank transfer, the amount received after the deduction of any bank fees and/or conversion of the currency of payment to pounds sterling must not be less than the sterling amount payable, as set out on the invoice.

Payment may also be made by one of the following methods:

**Sterling personal cheque drawn on a UK branch of a bank or building society:** all cheques must be cleared before you can collect your purchases and should be made payable to Bonhams 1793 Limited.

**Cash:** you may pay for *Lots* purchased by you at this *Sale* with notes or coins in the currency in which the *Sale* is conducted (but not any other currency) provided that the total amount payable by you in respect of all *Lots* purchased by you at the *Sale* does not exceed £3,000, or the equivalent in the currency in which the *Sale* is conducted, at the time when payment is made. If the amount payable by you for *Lots* exceeds that sum, the balance must be paid otherwise than in coins or notes; this limit applies to both payment at our premises and direct deposit into our bank account.

**Debit cards (including China Union Pay (CUP) cards and debit cards issued by Visa and MasterCard only).** There is no limit on payment value if payment is made in person using Chip & Pin verification.

**Payment by telephone** may also be accepted up to £5,000, subject to appropriate verification procedures, although this facility is not available for first time buyers. If the amount payable by you for *Lots* exceeds that sum, the balance must be paid by other means.

**Credit cards (including China Union Pay (CUP) cards and credit cards issued by Visa and MasterCard only).** There is a £5,000 limit on payment value if payment is made in person using Chip & Pin verification.

It may be advisable to notify your debit or credit card provider of your intended purchase in advance to reduce delays caused by us having to seek authority when you come to pay.

**Note: only one debit or credit card may be used for payment of an account balance.** If you have any questions with regards to card payments, please contact our Customer Services Department.

## 10. COLLECTION AND STORAGE

The *Buyer* of a *Lot* will not be allowed to collect it until payment in full and in cleared funds has been made (unless we have made a special arrangement with the *Buyer*). For collection and removal of purchased *Lots*, please refer to *Sale* Information at the front of the *Catalogue*. Our offices are open 9.00am – 5pm Monday to Friday. Details relating to the collection of a *Lot*, the storage of a *Lot* and our *Storage Contractor* after the *Sale* are set out in the *Catalogue*.

## 11. SHIPPING

For information and estimates on domestic and international shipping as well as export licenses please contact Alban Shipping on +44 (0) 1582 493 099 enquiries@albanshipping.co.uk

## 12. EXPORT/TRADE RESTRICTIONS

It is your sole responsibility to comply with all export and import regulations relating to your purchases and also to obtain any relevant export and/or import licence(s). Export licences are issued by Arts Council England and application forms can be obtained from its Export Licensing Unit. The detailed provisions of the export licencing arrangements can be found on the ACE website <http://www.artscouncil.org.uk/what-we-do/supporting-museums/cultural-property/export-controls/export-licensing/> or by phoning ACE on +44 (0)20 7973 5188. The need for import licences varies from country to country and you should acquaint yourself with all relevant local requirements and provisions. The refusal of any import or export licence(s) or any delay in obtaining such licence(s) shall not permit the rescission of any *Sale* nor allow any delay in making full payment for the *Lot*. Generally, please contact our shipping department before the *Sale* if you require assistance in relation to export regulations.

## 13. CITES REGULATIONS

Please be aware that all *Lots* marked with the symbol Y are subject to CITES regulations when exporting these items outside the EU. These regulations may be found at <http://www.defra.gov.uk/ahvla-en/imports-exports/cites/> or may be requested from:

Animal Health and Veterinary Laboratories Agency (AHVLA)  
Wildlife Licencing  
Floor 1, Zone 17, Temple Quay House  
2 The Square, Temple Quay  
BRISTOL BS1 6EB  
Tel: +44 (0) 117 372 8774

## 14. THE SELLERS AND/OR BONHAMS' LIABILITY

Other than any liability of the *Seller* to the *Buyer* of a *Lot* under the *Contract for Sale*, neither we nor the *Seller* are liable (whether in negligence or otherwise) for any error or misdescription or omission in any *Description* of a *Lot* or any *Estimate* in respect of it, whether contained in the *Catalogue* or

otherwise, whether given orally or in writing and whether given before or during the *Sale*. Neither we nor the *Seller* will be liable for any loss of *Business*, profits, revenue or income, or for loss of reputation, or for disruption to *Business* or wasted time on the part of management or staff, or for indirect losses or consequential damages of any kind, irrespective in any case of the nature, volume or source of the loss or damage alleged to be suffered, and irrespective of whether the said loss or damage is caused by or claimed in respect of any negligence, other tort, breach of contract (if any) or statutory duty, restitutionary claim or otherwise. In any circumstances where we and/or the *Seller* are liable in relation to any *Lot* or any *Description* or *Estimate* made of any *Lot*, or the conduct of any *Sale* in relation to any *Lot*, whether in damages, for an indemnity or contribution, or for a restitutionary remedy or otherwise, our and/or the *Seller's* liability (combined, if both we and the *Seller* are liable) will be limited to payment of a sum which will not exceed by way of maximum the amount of the *Purchase Price* of the *Lot* irrespective in any case of the nature, volume or source of any loss or damage alleged to be suffered or sum claimed as due, and irrespective of whether the liability arises from any negligence, other tort, breach of contract (if any) or statutory duty or otherwise. Nothing set out above will be construed as excluding or restricting (whether directly or indirectly) our liability or excluding or restricting any person's rights or remedies in respect of (i) fraud, or (ii) death or personal injury caused by our negligence (or by the negligence of any person under our control or for whom we are legally responsible), or (iii) acts or omissions for which we are liable under the Occupiers Liability Act 1957, or (iv) any other liability to the extent the same may not be excluded or restricted as a matter of law or (v) our undertakings under paragraphs 9 (in relation to specialist *Stamp* or *Book Sales* only) and 10 of the *Buyer's Agreement*. The same applies in respect of the *Seller*, as if references to us in this paragraph were substituted with references to the *Seller*.

## 15. BOOKS

As stated above, all *Lots* are sold on an "as is" basis, subject to all faults, imperfections and errors of *Description* save as set out below. However, you will be entitled to reject a *Book* in the circumstances set out in paragraph 11 of the *Buyers Agreement*. Please note that *Lots* comprising printed *Books*, unframed maps and bound manuscripts are not liable to VAT on the *Buyer's Premium*.

## 16. CLOCKS AND WATCHES

All *Lots* are sold "as is", and the absence of any reference to the condition of a clock or watch does not imply that the *Lot* is in good condition and without defects, repairs or restorations. Most clocks and watches have been repaired in the course of their normal lifetime and may now incorporate parts not original to them. Furthermore, *Bonhams* makes no representation or warranty that any clock or watch is in working order. As clocks and watches often contain fine and complex mechanisms, *Bidders* should be aware that a general service, change of battery or further repair work, for which the *Buyer* is solely responsible, may be necessary. *Bidders* should be aware that the importation of watches such as Rolex, Frank Muller and Corum into the United States is highly restricted. These watches may not be shipped to the USA and can only be imported personally.

## 17. FIREARMS – PROOF, CONDITION AND CERTIFICATION

### Proof of Firearms

The term "proof exemption" indicates that a firearm has been examined at a Proof House, but not proved, as either (a) it was deemed of interest and not intended for use, or (b) ammunition was not available. In either case, the firearm must be regarded as unsafe to fire unless subsequently proved. Firearms proved for Black Powder should not be used with smokeless ammunition.

The term "Certificate of Unprovability" indicates that a firearm has been examined at a Proof House and is deemed both unsuitable for proof and use. Reproof is required before any such firearm is to be used.

### Guns Sold as Parts

Barrels of guns sold as parts will only be made available for

sleeving and measurements once rendered unserviceable according to the Gun Barrel Proof Act of 1968 to 1978 and the Rules of Proof.

## Condition of Firearms

Comment in this *Catalogue* is restricted, in general, to exceptional condition and to those defects that might affect the immediate safety of a firearm in normal use. An intending *Bidder* unable to make technical examinations and assessments is recommended to seek advice from a gunmaker or from a modern firearms specialist. All prospective *Bidders* are advised to consult the ° of bore and wall-thickness measurements posted in the saleroom and available from the department. *Bidders* should note that guns are stripped only where there is a strong indication of a mechanical malfunction. Stripping is not, otherwise, undertaken. Guns intended for use should be stripped and cleaned beforehand. Hammer guns should have their rebound mechanisms checked before use. The safety mechanisms of all guns must be tested before use. All measurements are approximate.

## Original Gun Specifications Derived from Gunmakers

The Sporting Gun Department endeavours to confirm a gun's original specification and date of manufacture with makers who hold their original records.

## Licensing Requirements Firearms Act 1968 as amended

*Bonhams* is constantly reviewing its procedures and would remind you that, in the case of firearms or shotguns subject to certification, to conform with current legislation, *Bonhams* is required to see, as appropriate, your original registered firearms dealer's certificate / shot gun certificate / firearm certificate / museum firearms licence / Section 5 authority or import licence (or details of any exemption from which you may benefit, for instance Crown servant status) for the firearm(s) you have purchased prior to taking full payment of the amount shown on your invoice. Should you not already be in possession of such an authority or exemption, you are required to initially pay a deposit of 95% of the total invoice with the balance of 5% payable on presentation of your valid certificate or licence showing your authority to hold the firearm(s) concerned.

Please be advised that if a successful *Bidder* is then unable to produce the correct paperwork, the *Lot(s)* will be reoffered by *Bonhams* in the next appropriate *Sale*, on standard terms for *Sellers*, and you will be responsible for any loss incurred by *Bonhams* on the original *Sale* to you.

In the case of RFD certificates and Section 5 authorities, we wish to keep an up-to-date copy on file. Please supply us with a Fax or photocopy. It would be helpful if you could send us an updated copy whenever your certificate or authority is renewed or changed.

*Lots* marked 'S1' and bearing red labels are Section 1 firearms and require a valid British Firearms certificate, RFD Licence or import licence.

*Lots* marked 'S2' and bearing blue labels are Section 2 firearms and require a valid British Shotgun certificate, RFD licence or import licence.

*Lots* marked 'S5' and bearing specially marked red labels are Section 5 prohibited firearms and require a valid Section 5 Authority or import licence.

*Lots* marked with a 'SS8' and bearing yellow labels are for obsolete calibres and no licence is required unless ammunition is held.

Unmarked *Lots* require no licence.

Please do not hesitate to contact the Modern Sporting Gun Department should you have any queries.

## Taxidermy and Related Items

As a *Seller* of these articles, *Bonhams* undertakes to comply fully with Cites and DEFRA regulations. *Buyers* are advised to inform themselves of all such regulations and should expect the exportation of items to take some time to arrange.

## 18. FURNITURE

### Upholstered Furniture

Whilst we take every care in cataloguing furniture which has been upholstered we offer no *Guarantee* as to the originality of the wood covered by fabric or upholstery.

## 19. JEWELLERY

### Gemstones

Historically many gemstones have been subjected to a variety of treatments to enhance their appearance. Sapphires and rubies are routinely heat treated to improve their colour and clarity, similarly emeralds are frequently treated with oils or resin for the same purpose. Other treatments such as staining, irradiation or coating may have been used on other gemstones. These treatments may be permanent, whilst others may need special care or re-treatment over the years to retain their appearance. *Bidders* should be aware that *Estimates* assume that gemstones may have been subjected to such treatments. A number of laboratories issue certificates that give more detailed *Descriptions* of gemstones. However there may not be consensus between different laboratories on the degrees, or types of treatment for any particular gemstone. In the event that *Bonhams* has been given or has obtained certificates for any *Lot* in the *Sale* these certificates will be disclosed in the *Catalogue*. Although, as a matter of policy, *Bonhams* endeavours to provide certificates from recognised laboratories for certain gemstones, it is not feasible to obtain certificates for each *Lot*. In the event that no certificate is published in the *Catalogue*, *Bidders* should assume that the gemstones may have been treated. Neither *Bonhams* nor the *Seller* accepts any liability for contradictions or differing certificates obtained by *Buyers* on any *Lots* subsequent to the *Sale*.

### Estimated Weights

If a stone(s) weight appears within the body of the *Description* in capital letters, the stone(s) has been unmounted and weighed by *Bonhams*. If the weight of the stone(s) is stated to be approximate and does not appear in capital letters, the stone(s) has been assessed by us within its/their settings, and the stated weight is a statement of our opinion only. This information is given as a guide and *Bidders* should satisfy themselves with regard to this information as to its accuracy.

### Signatures

#### 1. A diamond brooch, by Kutchinsky

When the maker's name appears in the title, in *Bonhams'* opinion the piece is by that maker.

#### 2. A diamond brooch, signed Kutchinsky

Has a signature that, in *Bonhams'* opinion, is authentic but may contain gemstones that are not original, or the piece may have been altered.

#### 3. A diamond brooch, mounted by Kutchinsky

Has been created by the jeweller, in *Bonhams'* opinion, but using stones or designs supplied by the client.

## 20. PHOTOGRAPHS

### Explanation of Catalogue Terms

- "Bill Brandt": in our opinion a work by the artist.
- "Attributed to Bill Brandt": in our opinion probably a work by the artist, but less certainty to authorship is expressed than in the preceding category.
- "Signed and/or titled and/or dated and/or inscribed": in our opinion the signature and/or title and/or date and/or inscription are in the artist's hand.
- "Signed and/or titled and/or dated and/or inscribed in another hand": in our opinion the signature and/or title and/or date and/or inscription have been added by another hand.
- The date given is that of the image (negative). Where no further date is given, this indicates that the photographic print is vintage (the term "vintage" may also be included in the *Lot Description*). A vintage photograph is one which was made within approximately 5-10 years of the negative. Where a second, later date appears, this refers to the date of printing. Where the exact printing date is not known, but understood to be later, "printed later" will appear in the *Lot Description*.

- Unless otherwise specified, dimensions given are those of the piece of paper on which the image is printed, including any margins. Some photographs may appear in the *Catalogue* without margins illustrated.
- All photographs are sold unframed unless stated in the *Lot Description*.

## 21. PICTURES

### Explanation of Catalogue Terms

The following terms used in the *Catalogue* have the following meanings but are subject to the general provisions relating to *Descriptions* contained in the *Contract for Sale*:

- "Jacopo Bassano": in our opinion a work by the artist. When the artist's forename(s) is not known, a series of asterisks, followed by the surname of the artist, whether preceded by an initial or not, indicates that in our opinion the work is by the artist named;
- "Attributed to Jacopo Bassano": in our opinion probably a work by the artist but less certainty as to authorship is expressed than in the preceding category;
- "Studio/Workshop of Jacopo Bassano": in our opinion a work by an unknown hand in a studio of the artist which may or may not have been executed under the artist's direction;
- "Circle of Jacopo Bassano": in our opinion a work by a hand closely associated with a named artist but not necessarily his pupil;
- "Follower of Jacopo Bassano": in our opinion a work by a painter working in the artist's style, contemporary or nearly contemporary, but not necessarily his pupil;
- "Manner of Jacopo Bassano": in our opinion a work in the style of the artist and of a later date;
- "After Jacopo Bassano": in our opinion, a copy of a known work of the artist;
- "Signed and/or dated and/or inscribed": in our opinion the signature and/or date and/or inscription are from the hand of the artist;
- "Bears a signature and/or date and/or inscription": in our opinion the signature and/or date and/or inscription have been added by another hand.

## 22. PORCELAIN AND GLASS

### Damage and Restoration

For your guidance, in our *Catalogues* we detail, as far as practicable, recorded all significant defects, cracks and restoration. Such practicable *Descriptions* of damage cannot be definitive, and in providing *Condition Reports*, we cannot *Guarantee* that there are no other defects present which have not been mentioned. *Bidders* should satisfy themselves by inspection, as to the condition of each *Lot*. Please see the *Contract for Sale* printed in this *Catalogue*. Because of the difficulty in determining whether an item of glass has been repolished, in our *Catalogues* reference is only made to visible chips and cracks. No mention is made of repolishing, severe or otherwise.

## 23. VEHICLES

### The Veteran Car Club of Great Britain

#### Dating Plates and Certificates

When mention is made of a Veteran Car Club Dating Plate or Dating Certificate in this *Catalogue*, it should be borne in mind that the Veteran Car Club of Great Britain using the services of Veteran Car Company Ltd, does from time to time, review cars already dated and, in some instances, where fresh evidence becomes available, the review can result in an alteration of date. Whilst the Club and Veteran Car Company Ltd make every effort to ensure accuracy, the date shown on the Dating Plate or Dating Certificate cannot be guaranteed as correct and intending purchasers should make their own enquiries as to the date of the car.

## 24. WINE

*Lots* which are lying under Bond and those liable to VAT may not be available for immediate collection.

### Examining the wines

It is occasionally possible to provide a pre-*Sale* tasting for larger parcels (as defined below). This is generally limited to more recent and everyday drinking wines. Please contact the department for details.

Olt is not our policy to inspect every unopened case. In the case of wines older than 20 years the boxes will usually have been opened and levels and appearance noted in the *Catalogue* where necessary. You should make proper allowance for variations in ullage levels and conditions of corks, capsules and labels.

### Corks and Ullages

Ullage refers to the space between the base of the cork and the wine. Ullage levels for Bordeaux shaped bottles are only normally noted when below the neck and for Burgundy, Alsace, German and Cognac shaped bottles when greater than 4 centimetres (cm). Acceptable ullage levels increase with age; generally acceptable levels are as follows:

Under 15 years old – into neck or less than 4cm  
15 to 30 years old – top shoulder (ts) or up to 5cm  
Over 30 years old – high shoulder (hs) or up to 6cm

It should be noted that ullages may change between publication of the *Catalogue* and the *Sale* and that corks may fail as a result of transporting the wine. We will only accept responsibility for *Descriptions* of condition at the time of publication of the *Catalogue* and cannot accept responsibility for any loss resulting from failure of corks either before or after this point.

### Options to buy parcels

A parcel is a number of *Lots* of identical size of the same wine, bottle size and *Description*. The *Buyer* of any of these *Lots* has the option to accept some or all of the remaining *Lots* in the parcel at the same price, although such options will be at the *Auctioneer's* sole discretion. Absentee *Bidders* are, therefore, advised to bid on the first *Lot* in a parcel.

### Wines in Bond

Wines lying in Bond are marked Δ. All *Lots* sold under Bond, and which the *Buyer* wishes to remain under Bond, will be invoiced without VAT or Duty on the *Hammer Price*. If the *Buyer* wishes to take the *Lot* as Duty paid, UK Excise Duty and VAT will be added to the *Hammer Price* on the invoice.

*Buyers* must notify *Bonhams* at the time of the *sale* whether they wish to take their wines under Bond or Duty paid. If a *Lot* is taken under Bond, the *Buyer* will be responsible for all VAT, Duty, clearance and other charges that may be payable thereon.

*Buyers* outside the UK must be aware that any forwarding agent appointed to export their purchases must have a movement certificate for *Lots* to be released under Bond.

### Bottling Details and Case Terms

The following terms used in the *Catalogue* have the following meanings:

CB – Château bottled  
DB – Domaine bottled  
EstB – Estate bottled  
BB – Bordeaux bottled  
BE – Belgian bottled  
FB – French bottled  
GB – German bottled  
OB – Oporto bottled  
UK – United Kingdom bottled  
owc – original wooden case  
iwc – individual wooden case  
oc – original carton

## SYMBOLS

### THE FOLLOWING SYMBOLS ARE USED TO DENOTE

- Y Subject to CITES regulations when exporting these items outside the EU, see clause 13.
- TP Objects displayed with a TP will be located at the Cadogan Tate warehouse and will only be available for collection from this location.
- W Objects displayed with a w will be located in the Bonhams Warehouse and will only be available for collection from this location.
- Δ Wines lying in Bond.
- AR An *Additional Premium* will be payable to us by the *Buyer* to cover our *Expenses* relating to payment of royalties under the Artists Resale Right Regulations 2006. See clause 7 for details.
- The *Seller* has been guaranteed a minimum price for the *Lot*, either by *Bonhams* or a third party. This may take the form of an irrevocable bid by a third party, who may make a financial gain on a successful *Sale* or a financial loss if unsuccessful.
- ▲ *Bonhams* owns the *Lot* either wholly or partially or may otherwise have an economic interest.
- Ⓞ This lot contains or is made of ivory. The United States Government has banned the import of ivory into the USA.

•, †, \*, G, Ω, α see clause 8, VAT, for details.

### DATA PROTECTION – USE OF YOUR INFORMATION

Where we obtain any personal information about you, we shall only use it in accordance with the terms of our Privacy Policy (subject to any additional specific consent(s) you may have given at the time your information was disclosed). A copy of our Privacy Policy can be found on our *Website* [www.bonhams.com](http://www.bonhams.com) or requested by post from Customer Services Department, 101 New Bond Street, London, W1S 1SR or by email from [info@bonhams.com](mailto:info@bonhams.com)

### APPENDIX 1

#### CONTRACT FOR SALE

**IMPORTANT:** These terms may be changed in advance of the *Sale* of the *Lot* to you, by the setting out of different terms in the *Catalogue* for the *Sale* and/or by placing an insert in the *Catalogue* and/or by notices at the *Sale* venue and/or by oral announcements before and during the *Sale* at the *Sale* venue. You should be alert to this possibility of changes and ask in advance of bidding if there have been any.

Under this contract the *Seller's* liability in respect of the quality of the *Lot*, its fitness for any purpose and its conformity with any *Description* is limited. You are strongly advised to examine the *Lot* for yourself and/or obtain an independent examination of it before you buy it.

#### 1 THE CONTRACT

- 1.1 These terms govern the *Contract for Sale* of the *Lot* by the *Seller* to the *Buyer*.
- 1.2 The Definitions and Glossary contained in Appendix 3 in the *Catalogue* are incorporated into this *Contract for Sale* and a separate copy can also be provided by *Bonhams* on request. Where words and phrases are used which are in the List of Definitions, they are printed in italics.
- 1.3 The *Seller* sells the *Lot* as the principal to the *Contract for Sale*, such contract being made between the *Seller* and you through *Bonhams* which acts in the sole capacity as the *Seller's* agent and not as an additional principal. However, if the *Catalogue* states that *Bonhams* sells the *Lot* as principal, or such a statement is made by an announcement by the *Auctioneer*, or by a notice at the *Sale*, or an insert in the *Catalogue*, then *Bonhams* is the *Seller* for the purposes of this agreement.

- 1.4 The contract is made on the fall of the *Auctioneer's* hammer in respect of the *Lot* when it is knocked down to you.

#### 2 SELLER'S UNDERTAKINGS

- 2.1 The *Seller* undertakes to you that:
- 2.1.1 the *Seller* is the owner of the *Lot* or is duly authorised to sell the *Lot* by the owner;
- 2.1.2 save as disclosed in the *Entry* for the *Lot* in the *Catalogue*, the *Seller* sells the *Lot* with full title guarantee or, where the *Seller* is an executor, trustee, liquidator, receiver or administrator, with whatever right, title or interest he may have in the *Lot*;
- 2.1.3 except where the *Sale* is by an executor, trustee, liquidator, receiver or administrator the *Seller* is both legally entitled to sell the *Lot*, and legally capable of conferring on you quiet possession of the *Lot* and that the *Sale* conforms in every respect with the terms implied by the Sale of Goods Act 1979, Sections 12(1) and 12(2) (see the Definitions and Glossary);
- 2.1.4 the *Seller* has complied with all requirements, legal or otherwise, relating to any export or import of the *Lot*, and all duties and taxes in respect of the export or import of the *Lot* have (unless stated to the contrary in the *Catalogue* or announced by the *Auctioneer*) been paid and, so far as the *Seller* is aware, all third parties have complied with such requirements in the past;
- 2.1.5 subject to any alterations expressly identified as such made by announcement or notice at the *Sale* venue or by the *Notice to Bidders* or by an insert in the *Catalogue*, the *Lot* corresponds with the *Contractual Description* of the *Lot*, being that part of the *Entry* about the *Lot* in the *Catalogue* which is in bold letters and (except for colour) with any photograph of the *Lot* in the *Catalogue* and the contents of any *Condition Report* which has been provided to the *Buyer*.

#### 3 DESCRIPTIONS OF THE LOT

- 3.1 Paragraph 2.1.5 sets out what is the *Contractual Description* of the *Lot*. In particular, the *Lot* is not sold as corresponding with that part of the *Entry* in the *Catalogue* which is not printed in bold letters, which merely sets out (on the *Seller's* behalf) *Bonhams'* opinion about the *Lot* and which is not part of the *Contractual Description* upon which the *Lot* is sold. Any statement or representation other than that part of the *Entry* referred to in paragraph 2.1.5 (together with any express alteration to it as referred to in paragraph 2.1.5), including any *Description* or *Estimate*, whether made orally or in writing, including in the *Catalogue* or on *Bonhams' Website*, or by conduct, or otherwise, and whether by or on behalf of the *Seller* or *Bonhams* and whether made prior to or during the *Sale*, is not part of the *Contractual Description* upon which the *Lot* is sold.
- 3.2 Except as provided in paragraph 2.1.5, the *Seller* does not make or give and does not agree to make or give any contractual promise, undertaking, obligation, guarantee, warranty, or representation of fact, or undertake any duty of care, in relation to any *Description* of the *Lot* or any *Estimate* in relation to it, nor of the accuracy or completeness of any *Description* or *Estimate* which may have been made by or on behalf of the *Seller* including by *Bonhams*. No such *Description* or *Estimate* is incorporated into this *Contract for Sale*.

#### 4 FITNESS FOR PURPOSE AND SATISFACTORY QUALITY

- 4.1 The *Seller* does not make and does not agree to make any contractual promise, undertaking, obligation, guarantee, warranty, or representation of fact in relation to the satisfactory quality of the *Lot* or its fitness for any purpose.

- 4.2 The *Seller* will not be liable for any breach of any undertaking, whether implied by the Sale of Goods Act 1979 or otherwise, as to the satisfactory quality of the *Lot* or its fitness for any purpose.

#### 5 RISK, PROPERTY AND TITLE

- 5.1 Risk in the *Lot* passes to you when it is knocked down to you on the fall of the *Auctioneer's* hammer in respect of the *Lot*. The *Seller* will not be responsible thereafter for the *Lot* prior to you collecting it from *Bonhams* or the *Storage Contractor*, with whom you have separate contract(s) as *Buyer*. You will indemnify the *Seller* and keep the *Seller* fully indemnified from and against all claims, proceedings, costs, expenses and losses arising in respect of any injury, loss and damage caused to the *Lot* after the fall of the *Auctioneer's* hammer until you obtain full title to it.
- 5.2 Title to the *Lot* remains in and is retained by the *Seller* until the *Purchase Price* and all other sums payable by you to *Bonhams* in relation to the *Lot* have been paid in full to, and received in cleared funds by, *Bonhams*.

#### 6 PAYMENT

- 6.1 Your obligation to pay the *Purchase Price* arises when the *Lot* is knocked down to you on the fall of the *Auctioneer's* hammer in respect of the *Lot*.
- 6.2 Time will be of the essence in relation to payment of the *Purchase Price* and all other sums payable by you to *Bonhams*. Unless agreed in writing with you by *Bonhams* on the *Seller's* behalf (in which case you must comply with the terms of that agreement), all such sums must be paid to *Bonhams* by you in the currency in which the *Sale* was conducted by not later than 4.30pm on the second working day following the *Sale* and you must ensure that the funds are cleared by the seventh working day after the *Sale*. Payment must be made to *Bonhams* by one of the methods stated in the *Notice to Bidders* unless otherwise agreed with you in writing by *Bonhams*. If you do not pay any sums due in accordance with this paragraph, the *Seller* will have the rights set out in paragraph 8 below.

#### 7 COLLECTION OF THE LOT

- 7.1 Unless otherwise agreed in writing with you by *Bonhams*, the *Lot* will be released to you or to your order only when *Bonhams* has received cleared funds to the amount of the full *Purchase Price* and all other sums owed by you to the *Seller* and to *Bonhams*.
- 7.2 The *Seller* is entitled to withhold possession from you of any other *Lot* he has sold to you at the same or at any other *Sale* and whether currently in *Bonhams'* possession or not until payment in full and in cleared funds of the *Purchase Price* and all other sums due to the *Seller* and/or *Bonhams* in respect of the *Lot*.
- 7.3 You will collect and remove the *Lot* at your own expense from *Bonhams'* custody and/ or control or from the *Storage Contractor's* custody in accordance with *Bonhams'* instructions or requirements.
- 7.4 You will be wholly responsible for packing, handling and transport of the *Lot* on collection and for complying with all import or export regulations in connection with the *Lot*.
- 7.5 You will be wholly responsible for any removal, storage or other charges or *Expenses* incurred by the *Seller* if you do not remove the *Lot* in accordance with this paragraph 7 and will indemnify the *Seller* against all charges, costs, including any legal costs and fees, *Expenses* and losses suffered by the *Seller* by reason of your failure to remove the *Lot* including any charges due under any *Storage Contract*. All such sums due to the *Seller* will be payable on demand.

<b>8</b>	<b>FAILURE TO PAY FOR THE LOT</b>	<b>9</b>	<b>THE SELLER'S LIABILITY</b>	10.3	If either party to the <i>Contract for Sale</i> is prevented from performing that party's respective obligations under the <i>Contract for Sale</i> by circumstances beyond its reasonable control or if performance of its obligations would by reason of such circumstances give rise to a significantly increased financial cost to it, that party will not, for so long as such circumstances prevail, be required to perform such obligations. This paragraph does not apply to the obligations imposed on you by paragraph 6.
8.1	If the <i>Purchase Price</i> for a <i>Lot</i> is not paid to <i>Bonhams</i> in full in accordance with the <i>Contract for Sale</i> the <i>Seller</i> will be entitled, with the prior written agreement of <i>Bonhams</i> but without further notice to you, to exercise one or more of the following rights (whether through <i>Bonhams</i> or otherwise):	9.1	The <i>Seller</i> will not be liable for any injury, loss or damage caused by the <i>Lot</i> after the fall of the <i>Auctioneer's</i> hammer in respect of the <i>Lot</i> .	10.4	Any notice or other communication to be given under the <i>Contract for Sale</i> must be in writing and may be delivered by hand or sent by first class post or air mail or fax transmission, if to the <i>Seller</i> , addressed c/o <i>Bonhams</i> at its address or fax number in the <i>Catalogue</i> (marked for the attention of the Company Secretary), and if to you to the address or fax number of the <i>Buyer</i> given in the <i>Bidding Form</i> (unless notice of any change of address is given in writing). It is the responsibility of the sender of the notice or communication to ensure that it is received in a legible form within any applicable time period.
8.1.1	to terminate immediately the <i>Contract for Sale</i> of the <i>Lot</i> for your breach of contract;	9.2	Subject to paragraph 9.3 below, except for breach of the express undertaking provided in paragraph 2.1.5, the <i>Seller</i> will not be liable for any breach of any term that the <i>Lot</i> will correspond with any <i>Description</i> applied to it by or on behalf of the <i>Seller</i> , whether implied by the Sale of Goods Act 1979 or otherwise.	10.5	If any term or any part of any term of the <i>Contract for Sale</i> is held to be unenforceable or invalid, such unenforceability or invalidity will not affect the enforceability and validity of the remaining terms or the remainder of the relevant term.
8.1.2	to resell the <i>Lot</i> by auction, private treaty or any other means on giving seven days' written notice to you of the intention to resell;	9.3	Unless the <i>Seller</i> sells the <i>Lot</i> in the course of a <i>Business</i> and the <i>Buyer</i> buys it as a <i>Consumer</i> ,	10.6	References in the <i>Contract for Sale</i> to <i>Bonhams</i> will, where appropriate, include reference to <i>Bonhams'</i> officers, employees and agents.
8.1.3	to retain possession of the <i>Lot</i> ;	9.3.1	the <i>Seller</i> will not be liable (whether in negligence, other tort, breach of contract or statutory duty or in restitution or under the Misrepresentation Act 1967, or in any other way) for any lack of conformity with, or inaccuracy, error, misdescription or omission in any <i>Description</i> of the <i>Lot</i> or any <i>Entry</i> or <i>Estimate</i> in relation to the <i>Lot</i> made by or on behalf of the <i>Seller</i> (whether made in writing, including in the <i>Catalogue</i> , or on the <i>Website</i> , or orally, or by conduct or otherwise) and whether made before or after this agreement or prior to or during the <i>Sale</i> ;	10.7	References to the singular will include reference to the plural (and vice versa) and reference to any one gender will include reference to the other genders.
8.1.4	to remove and store the <i>Lot</i> at your expense;	9.3.2	the <i>Seller</i> will not be liable for any loss of <i>Business</i> , <i>Business</i> profits or revenue or income or for loss of reputation or for disruption to <i>Business</i> or wasted time on the part of the <i>Buyer</i> or of the <i>Buyer's</i> management or staff or, for any indirect losses or consequential damages of any kind, irrespective in any case of the nature, volume or source of the loss or damage alleged to be suffered, and irrespective of whether the said loss or damage is caused by or claimed in respect of any negligence, other tort, breach of contract, statutory duty, restitutionary claim or otherwise;	10.8	Reference to a numbered paragraph is to a paragraph of the <i>Contract for Sale</i> .
8.1.5	to take legal proceedings against you for any sum due under the <i>Contract for Sale</i> and/or damages for breach of contract;	9.3.3	in any circumstances where the <i>Seller</i> is liable to you in respect of the <i>Lot</i> , or any act, omission, statement, or representation in respect of it, or this agreement or its performance, and whether in damages, for an indemnity or contribution or for a restitutionary remedy or in any way whatsoever, the <i>Seller's</i> liability will be limited to payment of a sum which will not exceed by way of maximum the amount of the <i>Purchase Price</i> of the <i>Lot</i> irrespective in any case of the nature, volume or source of any loss or damage alleged to be suffered or sum claimed as due, and irrespective of whether the liability arises from any negligence, other tort, breach of contract, statutory duty, bailee's duty, restitutionary claim or otherwise.	10.9	Save as expressly provided in paragraph 10.12 nothing in the <i>Contract for Sale</i> confers (or purports to confer) on any person who is not a party to the <i>Contract for Sale</i> any benefit conferred by, or the right to enforce any term of, the <i>Contract for Sale</i> .
8.1.6	to be paid interest on any monies due (after as well as before judgement or order) at the annual rate of 5% per annum above the base rate of National Westminster Bank Plc from time to time to be calculated on a daily basis from the date upon which such monies become payable until the date of actual payment;	9.4	Nothing set out in paragraphs 9.1 to 9.3 above will be construed as excluding or restricting (whether directly or indirectly) any person's liability or excluding or restricting any person's rights or remedies in respect of (i) fraud, or (ii) death or personal injury caused by the <i>Seller's</i> negligence (or any person under the <i>Seller's</i> control or for whom the <i>Seller</i> is legally responsible), or (iii) acts or omissions for which the <i>Seller</i> is liable under the Occupiers Liability Act 1957, or (iv) any other liability to the extent the same may not be excluded or restricted as a matter of law.	10.10	Where the <i>Contract for Sale</i> confers an immunity from, and/or an exclusion or restriction of, the responsibility and/or liability of the <i>Seller</i> , it will also operate in favour and for the benefit of <i>Bonhams</i> , <i>Bonhams'</i> holding company and the subsidiaries of such holding company and the successors and assigns of <i>Bonhams</i> and of such companies and of any officer, employee and agent of <i>Bonhams</i> and such companies, each of whom will be entitled to rely on the relevant immunity and/or exclusion and/or restriction within and for the purposes of Contracts (Rights of Third Parties) Act 1999, which enables the benefit of a contract to be extended to a person who is not a party to the contract, and generally at law.
8.1.7	to repossess the <i>Lot</i> (or any part thereof) which has not become your property, and for this purpose (unless the <i>Buyer</i> buys the <i>Lot</i> as a <i>Consumer</i> from the <i>Seller</i> selling in the course of a <i>Business</i> ) you hereby grant an irrevocable licence to the <i>Seller</i> by himself and to his servants or agents to enter upon all or any of your premises (with or without vehicles) during normal <i>Business</i> hours to take possession of the <i>Lot</i> or part thereof;	10	<b>MISCELLANEOUS</b>	11	<b>GOVERNING LAW</b>
8.1.8	to retain possession of any other property sold to you by the <i>Seller</i> at the <i>Sale</i> or any other auction or by private treaty until all sums due under the <i>Contract for Sale</i> shall have been paid in full in cleared funds;	10.1	You may not assign either the benefit or burden of the <i>Contract for Sale</i> .	11	All transactions to which the <i>Contract for Sale</i> applies and all connected matters will be governed by and construed in accordance with the laws of that part of the United Kingdom where the <i>Sale</i> takes place and the <i>Seller</i> and you each submit to the exclusive jurisdiction of the courts of that part of the United Kingdom, save that the <i>Seller</i> may bring proceedings against you in any other court of competent jurisdiction to the extent permitted by the laws of the relevant jurisdiction. <i>Bonhams</i> has a complaints procedure in place.
8.1.9	to retain possession of, and on seven days written notice to sell, <i>Without Reserve</i> , any of your other property in the possession of the <i>Seller</i> and/or of <i>Bonhams</i> (as bailee for the <i>Seller</i> ) for any purpose (including, without limitation, other goods sold to you) and to apply any monies due to you as a result of such <i>Sale</i> in satisfaction or part satisfaction of any amounts owed to the <i>Seller</i> or to <i>Bonhams</i> ; and	10.2	The <i>Seller's</i> failure or delay in enforcing or exercising any power or right under the <i>Contract for Sale</i> will not operate or be deemed to operate as a waiver of his rights under it except to the extent of any express waiver given to you in writing. Any such waiver will not affect the <i>Seller's</i> ability subsequently to enforce any right arising under the <i>Contract for Sale</i> .		
8.1.10	so long as such goods remain in the possession of the <i>Seller</i> or <i>Bonhams</i> as its bailee, to rescind the contract for the <i>Sale</i> of any other goods sold to you by the <i>Seller</i> at the <i>Sale</i> or at any other auction or by private treaty and apply any monies received from you in respect of such goods in part or full satisfaction of any amounts owed to the <i>Seller</i> or to <i>Bonhams</i> by you.				
8.2	You agree to indemnify the <i>Seller</i> against all legal and other costs of enforcement, all losses and other <i>Expenses</i> and costs (including any monies payable to <i>Bonhams</i> in order to obtain the release of the <i>Lot</i> ) incurred by the <i>Seller</i> (whether or not court proceedings will have been issued) as a result of <i>Bonhams</i> taking steps under this paragraph 8 on a full indemnity basis together with interest thereon (after as well as before judgement or order) at the rate specified in paragraph 8.1.6 from the date upon which the <i>Seller</i> becomes liable to pay the same until payment by you.				
8.3	On any resale of the <i>Lot</i> under paragraph 8.1.2, the <i>Seller</i> will account to you in respect of any balance remaining from any monies received by him or on his behalf in respect of the <i>Lot</i> , after the payment of all sums due to the <i>Seller</i> and to <i>Bonhams</i> , within 28 days of receipt of such monies by him or on his behalf.				

## APPENDIX 2

### BUYER'S AGREEMENT

**IMPORTANT:** These terms may be changed in advance of the Sale of the Lot to you, by the setting out of different terms in the Catalogue for the Sale and/or by placing an insert in the Catalogue and/or by notices at the Sale venue and/or by oral announcements before and during the Sale at the Sale venue. You should be alert to this possibility of changes and ask in advance of bidding if there have been any.

#### 1 THE CONTRACT

- 1.1 These terms govern the contract between Bonhams personally and the Buyer, being the person to whom a Lot has been knocked down by the Auctioneer.
- 1.2 The Definitions and Glossary contained in Appendix 3 to the Catalogue for the Sale are incorporated into this agreement and a separate copy can also be provided by us on request. Where words and phrases which are defined in the List of Definitions are used in this agreement, they are printed in italics. Reference is made in this agreement to information printed in the Notice to Bidders, printed in the Catalogue for the Sale, and where such information is referred to it is incorporated into this agreement.
- 1.3 Except as specified in paragraph 4 of the Notice to Bidders the Contract for Sale of the Lot between you and the Seller is made on the fall of the Auctioneer's hammer in respect of the Lot, when it is knocked down to you. At that moment a separate contract is also made between you and Bonhams on the terms in this Buyer's Agreement.
- 1.4 We act as agents for the Seller and are not answerable or personally responsible to you for any breach of contract or other default by the Seller, unless Bonhams sells the Lot as principal.
- 1.5 Our personal obligations to you are governed by this agreement and we agree, subject to the terms below, to the following obligations:
- 1.5.1 we will, until the date and time specified in the Notice to Bidders or otherwise notified to you, store the Lot in accordance with paragraph 5;
- 1.5.2 subject to any power of the Seller or us to refuse to release the Lot to you, we will release the Lot to you in accordance with paragraph 4 once you have paid to us, in cleared funds, everything due to us and the Seller;
- 1.5.3 we will provide guarantees in the terms set out in paragraphs 9 and 10.
- 1.6 We do not make or give and do not agree to make or give any contractual promise, undertaking, obligation, Guarantee, warranty, representation of fact in relation to any Description of the Lot or any Estimate in relation to it, nor of the accuracy or completeness of any Description or Estimate which may have been made by us or on our behalf or by or on behalf of the Seller (whether made orally or in writing, including in the Catalogue or on Bonhams' Website, or by conduct, or otherwise), and whether made before or after this agreement or prior to or during the Sale. No such Description or Estimate is incorporated into this agreement between you and us. Any such Description or Estimate, if made by us or on our behalf, was (unless Bonhams itself sells the Lot as principal) made as agent on behalf of the Seller.

#### 2 PERFORMANCE OF THE CONTRACT FOR SALE

You undertake to us personally that you will observe and comply with all your obligations and undertakings to the Seller under the Contract for Sale in respect of the Lot.

#### 3 PAYMENT

- 3.1 Unless agreed in writing between you and us or as otherwise set out in the Notice to Bidders, you must pay to us by not later than 4.30pm on the second working day following the Sale:
- 3.1.1 the Purchase Price for the Lot;
- 3.1.2 a Buyer's Premium in accordance with the rates set out in the Notice to Bidders on each lot, and
- 3.1.3 if the Lot is marked [AP], an Additional Premium which is calculated and payable in accordance with the Notice to Bidders together with VAT on that sum if applicable so that all sums due to us are cleared funds by the seventh working day after the Sale.
- 3.2 You must also pay us on demand any Expenses payable pursuant to this agreement.
- 3.3 All payments to us must be made in the currency in which the Sale was conducted, using, unless otherwise agreed by us in writing, one of the methods of payment set out in the Notice to Bidders. Our invoices will only be addressed to the registered Bidder unless the Bidder is acting as an agent for a named principal and we have approved that arrangement, in which case we will address the invoice to the principal.
- 3.4 Unless otherwise stated in this agreement all sums payable to us will be subject to VAT at the appropriate rate and VAT will be payable by you on all such sums.
- 3.5 We may deduct and retain for our own benefit from the monies paid by you to us the Buyer's Premium, the Commission payable by the Seller in respect of the Lot, any Expenses and VAT and any interest earned and/or incurred until payment to the Seller.
- 3.6 Time will be of the essence in relation to any payment payable to us. If you do not pay the Purchase Price, or any other sum due to us in accordance with this paragraph 3, we will have the rights set out in paragraph 7 below.
- 3.7 Where a number of Lots have been knocked down to you, any monies we receive from you will be applied firstly pro-rata to pay the Purchase Price of each Lot and secondly pro-rata to pay all amounts due to Bonhams.

#### 4 COLLECTION OF THE LOT

- 4.1 Subject to any power of the Seller or us to refuse to release the Lot to you, once you have paid to us, in cleared funds, everything due to the Seller and to us, we will release the Lot to you or as you may direct us in writing. The Lot will only be released on production of a buyer collection document, obtained from our cashier's office.
- 4.2 You must collect and remove the Lot at your own expense by the date and time specified in the Notice to Bidders, or if no date is specified, by 4.30pm on the seventh day after the Sale.
- 4.3 For the period referred to in paragraph 4.2, the Lot can be collected from the address referred to in the Notice to Bidders for collection on the days and times specified in the Notice to Bidders. Thereafter, the Lot may be removed elsewhere for storage and you must enquire from us as to when and where you can collect it, although this information will usually be set out in the Notice to Bidders.

- 4.4 If you have not collected the Lot by the date specified in the Notice to Bidders, you authorise us, acting as your agent and on your behalf, to enter into a contract (the "Storage Contract") with the Storage Contractor for the storage of the Lot on the then current standard terms and conditions agreed between Bonhams and the Storage Contractor (copies of which are available on request). If the Lot is stored at our premises storage fees at our current daily rates (currently a minimum of £3 plus VAT per Lot per day) will be payable from the expiry of the period referred to in paragraph 4.2. These storage fees form part of our Expenses.
- 4.5 Until you have paid the Purchase Price and any Expenses in full the Lot will either be held by us as agent on behalf of the Seller or held by the Storage Contractor as agent on behalf of the Seller and ourselves on the terms contained in the Storage Contract.
- 4.6 You undertake to comply with the terms of any Storage Contract and in particular to pay the charges (and all costs of moving the Lot into storage) due under any Storage Contract. You acknowledge and agree that you will not be able to collect the Lot from the Storage Contractor's premises until you have paid the Purchase Price, any Expenses and all charges due under the Storage Contract.
- 4.7 You will be wholly responsible for packing, handling and transport of the Lot on collection and for complying with all import or export regulations in connection with the Lot.
- 4.8 You will be wholly responsible for any removal, storage, or other charges for any Lot not removed in accordance with paragraph 4.2, payable at our current rates, and any Expenses we incur (including any charges due under the Storage Contract), all of which must be paid by you on demand and in any event before any collection of the Lot by you or on your behalf.

#### 5 STORING THE LOT

We agree to store the Lot until the earlier of your removal of the Lot or until the time and date set out in the Notice to Bidders, on the Sale Information Page or at the back of the catalogue (or if no date is specified, by 4.30pm on the seventh day after the Sale) and, subject to paragraphs 6 and 10, to be responsible as bailee to you for damage to or the loss or destruction of the Lot (notwithstanding that it is not your property before payment of the Purchase Price). If you do not collect the Lot before the time and date set out in the Notice to Bidders (or if no date is specified, by 4.30pm on the seventh day after the Sale) we may remove the Lot to another location, the details of which will usually be set out in the relevant section of the Catalogue. If you have not paid for the Lot in accordance with paragraph 3, and the Lot is moved to any third party's premises, the Lot will be held by such third party strictly to Bonhams' order and we will retain our lien over the Lot until we have been paid in full in accordance with paragraph 3.

#### 6 RESPONSIBILITY FOR THE LOT

- 6.1 Only on the payment of the Purchase Price to us will title in the Lot pass to you. However under the Contract for Sale, the risk in the Lot passed to you when it was knocked down to you.
- 6.2 You are advised to obtain insurance in respect of the Lot as soon as possible after the Sale.

<b>7</b>	<b>FAILURE TO PAY OR TO REMOVE THE LOT AND PART PAYMENTS</b>	7.3	If you pay us only part of the sums due to us such payment shall be applied firstly to the <i>Purchase Price</i> of the <i>Lot</i> (or where you have purchased more than one <i>Lot</i> pro-rata towards the <i>Purchase Price</i> of each <i>Lot</i> ) and secondly to the <i>Buyer's Premium</i> (or where you have purchased more than one <i>Lot</i> pro-rata to the <i>Buyer's Premium</i> on each <i>Lot</i> ) and thirdly to any other sums due to us.	9.3	Paragraph 9 will not apply in respect of a <i>Forgery</i> if:
7.1	If all sums payable to us are not so paid in full at the time they are due and/or the <i>Lot</i> is not removed in accordance with this agreement, we will without further notice to you be entitled to exercise one or more of the following rights (without prejudice to any rights we may exercise on behalf of the <i>Seller</i> ):			9.3.1	the <i>Entry</i> in relation to the <i>Lot</i> contained in the <i>Catalogue</i> reflected the then accepted general opinion of scholars and experts or fairly indicated that there was a conflict of such opinion or reflected the then current opinion of an expert acknowledged to be a leading expert in the relevant field; or
7.1.1	to terminate this agreement immediately for your breach of contract;	7.4	We will account to you in respect of any balance we hold remaining from any monies received by us in respect of any <i>Sale</i> of the <i>Lot</i> under our rights under this paragraph 7 after the payment of all sums due to us and/or the <i>Seller</i> within 28 days of receipt by us of all such sums paid to us.	9.3.2	it can be established that the <i>Lot</i> is a <i>Forgery</i> only by means of a process not generally accepted for use until after the date on which the <i>Catalogue</i> was published or by means of a process which it was unreasonable in all the circumstances for us to have employed.
7.1.2	to retain possession of the <i>Lot</i> ;				
7.1.3	to remove, and/or store the <i>Lot</i> at your expense;				
7.1.4	to take legal proceedings against you for payment of any sums payable to us by you (including the <i>Purchase Price</i> ) and/or damages for breach of contract;	<b>8</b>	<b>CLAIMS BY OTHER PERSONS IN RESPECT OF THE LOT</b>	9.4	You authorise us to carry out such processes and tests on the <i>Lot</i> as we in our absolute discretion consider necessary to satisfy ourselves that the <i>Lot</i> is or is not a <i>Forgery</i> .
7.1.5	to be paid interest on any monies due to us (after as well as before judgement or order) at the annual rate of 5% per annum above the base lending rate of National Westminster Bank Plc from time to time to be calculated on a daily basis from the date upon which such monies become payable until the date of actual payment;	8.1	Whenever it becomes apparent to us that the <i>Lot</i> is the subject of a claim by someone other than you and other than the <i>Seller</i> (or that such a claim can reasonably be expected to be made), we may, at our absolute discretion, deal with the <i>Lot</i> in any manner which appears to us to recognise the legitimate interests of ourselves and the other parties involved and lawfully to protect our position and our legitimate interests. Without prejudice to the generality of the discretion and by way of example, we may:	9.5	If we are satisfied that a <i>Lot</i> is a <i>Forgery</i> we will (as principal) purchase the <i>Lot</i> from you and you will transfer the title to the <i>Lot</i> in question to us, with full title guarantee, free from any liens, charges, encumbrances and adverse claims, in accordance with the provisions of Sections 12(1) and 12(2) of the Sale of Goods Act 1979 and we will pay to you an amount equal to the sum of the <i>Purchase Price</i> , <i>Buyer's Premium</i> , <i>VAT</i> and <i>Expenses</i> paid by you in respect of the <i>Lot</i> .
7.1.6	to repossess the <i>Lot</i> (or any part thereof) which has not become your property, and for this purpose (unless you buy the <i>Lot</i> as a <i>Consumer</i> ) you hereby grant an irrevocable licence to us, by ourselves, our servants or agents, to enter upon all or any of your premises (with or without vehicles) during normal business hours to take possession of any <i>Lot</i> or part thereof;	8.1.1	retain the <i>Lot</i> to investigate any question raised or reasonably expected by us to be raised in relation to the <i>Lot</i> ; and/or	9.6	The benefit of paragraph 9 is personal to, and incapable of assignment by, you.
7.1.7	to sell the <i>Lot Without Reserve</i> by auction, private treaty or any other means on giving you three months' written notice of our intention to do so;	8.1.2	deliver the <i>Lot</i> to a person other than you; and/or	9.7	If you sell or otherwise dispose of your interest in the <i>Lot</i> , all rights and benefits under this paragraph will cease.
7.1.8	to retain possession of any of your other property in our possession for any purpose (including, without limitation, other goods sold to you or with us for <i>Sale</i> ) until all sums due to us have been paid in full;	8.1.3	commence interpleader proceedings or seek any other order of any court, mediator, arbitrator or government body; and/or	9.8	Paragraph 9 does not apply to a <i>Lot</i> made up of or including a Chinese painting or Chinese paintings, a motor vehicle or motor vehicles, a <i>Stamp</i> or <i>Stamps</i> or a <i>Book</i> or <i>Books</i> .
7.1.9	to apply any monies received from you for any purpose whether at the time of your default or at any time thereafter in payment or part payment of any sums due to us by you under this agreement;	8.1.4	require an indemnity and/or security from you in return for pursuing a course of action agreed to by you.		
7.1.10	on three months' written notice to sell, <i>Without Reserve</i> , any of your other property in our possession or under our control for any purpose (including other goods sold to you or with us for <i>Sale</i> ) and to apply any monies due to you as a result of such <i>Sale</i> in payment or part payment of any amounts owed to us;	8.2	The discretion referred to in paragraph 8.1:	<b>10</b>	<b>OUR LIABILITY</b>
7.1.11	refuse to allow you to register for a future <i>Sale</i> or to reject a bid from you at any future <i>Sale</i> or to require you to pay a deposit before any bid is accepted by us at any future <i>Sale</i> in which case we will be entitled to apply such deposit in payment or part payment, as the case may be, of the <i>Purchase Price</i> of any <i>Lot</i> of which you are the <i>Buyer</i> .	8.2.1	may be exercised at any time during which we have actual or constructive possession of the <i>Lot</i> , or at any time after such possession, where the cessation of such possession has occurred by reason of any decision, order or ruling of any court, mediator, arbitrator or government body; and	10.1	We will not be liable whether in negligence, other tort, breach of contract or statutory duty or in restitution or under the Misrepresentation Act 1967 or in any other way for lack of conformity with or any inaccuracy, error, misdescription or omission in any <i>Description</i> of the <i>Lot</i> or any <i>Entry</i> or <i>Estimate</i> in respect of it, made by us or on our behalf or by or on behalf of the <i>Seller</i> (whether made in writing, including in the <i>Catalogue</i> , or on the <i>Bonhams' Website</i> , or orally, or by conduct or otherwise) and whether made before or after this agreement or prior to or during the <i>Sale</i> .
7.2	You agree to indemnify us against all legal and other costs, all losses and all other <i>Expenses</i> (whether or not court proceedings will have been issued) incurred by us as a result of our taking steps under this paragraph 7 on a full indemnity basis together with interest thereon (after as well as before judgement or order) at the rate specified in paragraph 7.1.5 from the date upon which we become liable to pay the same until payment by you.	8.2.2	will not be exercised unless we believe that there exists a serious prospect of a good arguable case in favour of the claim.	10.2	Our duty to you while the <i>Lot</i> is at your risk and/or your property and in our custody and/or control is to exercise reasonable care in relation to it, but we will not be responsible for damage to the <i>Lot</i> or to other persons or things caused by:
		<b>9</b>	<b>FORGERIES</b>	10.2.1	handling the <i>Lot</i> if it was affected at the time of <i>Sale</i> to you by woodworm and any damage is caused as a result of it being affected by woodworm; or
		9.1	We undertake a personal responsibility for any <i>Forgery</i> in accordance with the terms of this paragraph 9.	10.2.2	changes in atmospheric pressure; nor will we be liable for:
		9.2	Paragraph 9 applies only if:	10.2.3	damage to tension stringed musical instruments; or
		9.2.1	your name appears as the named person to whom the original invoice was made out by us in respect of the <i>Lot</i> and that invoice has been paid; and	10.2.4	damage to gilded picture frames, plaster picture frames or picture frame glass; and if the <i>Lot</i> is or becomes dangerous, we may dispose of it without notice to you in advance in any manner we think fit and we will be under no liability to you for doing so.
		9.2.2	you notify us in writing as soon as reasonably practicable after you have become aware that the <i>Lot</i> is or may be a <i>Forgery</i> , and in any event within one year after the <i>Sale</i> , that the <i>Lot</i> is a <i>Forgery</i> ; and		
		9.2.3	within one month after such notification has been given, you return the <i>Lot</i> to us in the same condition as it was at the time of the <i>Sale</i> , accompanied by written evidence that the <i>Lot</i> is a <i>Forgery</i> and details of the <i>Sale</i> and <i>Lot</i> number sufficient to identify the <i>Lot</i> .		

10.3.1 We will not be liable to you for any loss of *Business*, *Business* profits, revenue or income or for loss of *Business* reputation or for disruption to *Business* or wasted time on the part of the *Buyer's* management or staff or, if you are buying the *Lot* in the course of a *Business*, for any indirect losses or consequential damages of any kind, irrespective in any case of the nature, volume or source of the loss or damage alleged to be suffered, and irrespective of whether the said loss or damage is caused by or claimed in respect of any negligence, other tort, breach of contract, statutory duty, bailee's duty, a restitutionary claim or otherwise.

10.3.2 Unless you buy the *Lot* as a *Consumer*, in any circumstances where we are liable to you in respect of a *Lot*, or any act, omission, statement, representation in respect of it, or this agreement or its performance, and whether in damages, for an indemnity or contribution or for a restitutionary remedy or in any way whatsoever, our liability will be limited to payment of a sum which will not exceed by way of maximum the amount of the *Purchase Price* of the *Lot* plus *Buyer's Premium* (less any sum you may be entitled to recover from the *Seller*) irrespective in any case of the nature, volume or source of any loss or damage alleged to be suffered or sum claimed as due, and irrespective of whether the liability arises from negligence, other tort, breach of contract, statutory duty, bailee's duty, a restitutionary claim or otherwise.

You may wish to protect yourself against loss by obtaining insurance.

10.4 Nothing set out above will be construed as excluding or restricting (whether directly or indirectly) any person's liability or excluding or restricting any person's rights or remedies in respect of (i) fraud, or (ii) death or personal injury caused by our negligence (or any person under our control or for whom we are legally responsible), or (iii) acts or omissions for which we are liable under the Occupiers Liability Act 1957, or (iv) any other liability to the extent the same may not be excluded or restricted as a matter of law, or (v) under our undertaking in paragraph 9 of these conditions.

## 11 BOOKS MISSING TEXT OR ILLUSTRATIONS

Where the *Lot* is made up wholly of a *Book* or *Books* and any *Book* does not contain text or illustrations (in either case referred to as a "non-conforming *Lot*"), we undertake a personal responsibility for such a non-conforming *Lot* in accordance with the terms of this paragraph, if:

the original invoice was made out by us to you in respect of the *Lot* and that invoice has been paid; and

you notify us in writing as soon as reasonably practicable after you have become aware that the *Lot* is or may be a non-conforming *Lot*, and in any event within 20 days after the *Sale* (or such longer period as we may agree in writing) that the *Lot* is a non-conforming *Lot*; and

within 20 days of the date of the relevant *Sale* (or such longer period as we may agree in writing) you return the *Lot* to us in the same condition as it was at the time of the *Sale*, accompanied by written evidence that the *Lot* is a non-conforming *Lot* and details of the *Sale* and *Lot* number sufficient to identify the *Lot*.

but not if:

the *Entry* in the *Catalogue* in respect of the *Lot* indicates that the rights given by this paragraph do not apply to it; or

the *Entry* in the *Catalogue* in respect of the *Lot* reflected the then accepted general opinion of scholars and experts or fairly indicated that there was a conflict of such opinion; or

it can be established that the *Lot* is a non-conforming *Lot* only by means of a process not generally accepted for use until after the date on which the *Catalogue* was published or by means of a process which it was unreasonable in all the circumstances for us to have employed; or

the *Lot* comprises atlases, maps, autographs, manuscripts, extra illustrated books, music or periodical publications; or

the *Lot* was listed in the *Catalogue* under "collections" or "collections and various" or the *Lot* was stated in the *Catalogue* to comprise or contain a collection, issue or *Books* which are undescribed or the missing text or illustrations are referred to or the relevant parts of the *Book* contain blanks, half titles or advertisements.

If we are reasonably satisfied that a *Lot* is a non-conforming *Lot*, we will (as principal) purchase the *Lot* from you and you will transfer the title to the *Lot* in question to us, with full title guarantee, free from any liens, charges, encumbrances and adverse claims and we will pay to you an amount equal to the sum of the *Purchase Price* and *Buyer's Premium* paid by you in respect of the *Lot*.

The benefit of paragraph 10 is personal to, and incapable of assignment by, you and if you sell or otherwise dispose of your interest in the *Lot*, all rights and benefits under this paragraph will cease.

## 12 MISCELLANEOUS

12.1 You may not assign either the benefit or burden of this agreement.

12.2 Our failure or delay in enforcing or exercising any power or right under this agreement will not operate or be deemed to operate as a waiver of our rights under it except to the extent of any express waiver given to you in writing. Any such waiver will not affect our ability subsequently to enforce any right arising under this agreement.

12.3 If either party to this agreement is prevented from performing that party's respective obligations under this agreement by circumstances beyond its reasonable control or if performance of its obligations would by reason of such circumstances give rise to a significantly increased financial cost to it, that party will not, for so long as such circumstances prevail, be required to perform such obligations. This paragraph does not apply to the obligations imposed on you by paragraph 3.

12.4 Any notice or other communication to be given under this agreement must be in writing and may be delivered by hand or sent by first class post or air mail or fax transmission (if to *Bonhams* marked for the attention of the Company Secretary), to the address or fax number of the relevant party given in the *Contract Form* (unless notice of any change of address is given in writing). It is the responsibility of the sender of the notice or communication to ensure that it is received in a legible form within any applicable time period.

12.5 If any term or any part of any term of this agreement is held to be unenforceable or invalid, such unenforceability or invalidity will not affect the enforceability and validity of the remaining terms or the remainder of the relevant term.

12.6 References in this agreement to *Bonhams* will, where appropriate, include reference to *Bonhams'* officers, employees and agents.

12.7 The headings used in this agreement are for convenience only and will not affect its interpretation.

12.8 In this agreement "including" means "including, without limitation".

12.9 References to the singular will include reference to the plural (and vice versa) and reference to any one gender will include reference to the other genders.

12.10 Reference to a numbered paragraph is to a paragraph of this agreement.

12.11 Save as expressly provided in paragraph 12.12 nothing in this agreement confers (or purports to confer) on any person who is not a party to this agreement any benefit conferred by, or the right to enforce any term of, this agreement.

12.12 Where this agreement confers an immunity from, and/or an exclusion or restriction of, the responsibility and/or liability of *Bonhams*, it will also operate in favour and for the benefit of *Bonhams'* holding company and the subsidiaries of such holding company and the successors and assigns of *Bonhams* and of such companies and of any officer, employee and agent of *Bonhams* and such companies, each of whom will be entitled to rely on the relevant immunity and/or exclusion and/or restriction within and for the purposes of Contracts (Rights of Third Parties) Act 1999, which enables the benefit of a contract to be extended to a person who is not a party to the contract, and generally at law.

## 13 GOVERNING LAW

All transactions to which this agreement applies and all connected matters will be governed by and construed in accordance with the laws of that part of the United Kingdom where the *Sale* takes (or is to take) place and we and you each submit to the exclusive jurisdiction of the courts of that part of the United Kingdom, save that we may bring proceedings against you in any other court of competent jurisdiction to the extent permitted by the laws of the relevant jurisdiction. *Bonhams* has a complaints procedure in place.

## DATA PROTECTION – USE OF YOUR INFORMATION

Where we obtain any personal information about you, we shall only use it in accordance with the terms of our Privacy Policy (subject to any additional specific consent(s) you may have given at the time your information was disclosed). A copy of our Privacy Policy can be found on our *Website* [www.bonhams.com](http://www.bonhams.com) or requested by post from Customer Services Department, 101 New Bond Street, London W1S 1SR, United Kingdom or by email from [info@bonhams.com](mailto:info@bonhams.com).

## APPENDIX 3

### DEFINITIONS AND GLOSSARY

Where these Definitions and Glossary are incorporated, the following words and phrases used have (unless the context otherwise requires) the meanings given to them below. The Glossary is to assist you to understand words and phrases which have a specific legal meaning with which you may not be familiar.

### LIST OF DEFINITIONS

"Additional Premium" a premium, calculated in accordance with the *Notice to Bidders*, to cover *Bonhams'* Expenses relating to the payment of royalties under the Artists Resale Right Regulations 2006 which is payable by the *Buyer* to *Bonhams* on any *Lot* marked [AR] which sells for a *Hammer Price* which together with the *Buyer's Premium* (but excluding any VAT) equals or exceeds 1000 euros (converted into the currency of the *Sale* using the European Central Bank Reference rate prevailing on the date of the *Sale*).  
"Auctioneer" the representative of *Bonhams* conducting the *Sale*.



**"Bidder"** a person who has completed a *Bidding Form*.

**"Bidding Form"** our Bidding Registration Form, our Absentee Bidding Form or our Telephone Bidding Form.

**"Bonhams"** Bonhams 1793 Limited or its successors or assigns. *Bonhams* is also referred to in the *Buyer's Agreement*, the Conditions of Business and the *Notice to Bidders* by the words "we", "us" and "our".

**"Book"** a printed *Book* offered for *Sale* at a specialist *Book Sale*.

**"Business"** includes any trade, *Business* and profession.

**"Buyer"** the person to whom a *Lot* is knocked down by the *Auctioneer*. The *Buyer* is also referred to in the *Contract for Sale* and the *Buyer's Agreement* by the words "you" and "your".

**"Buyer's Agreement"** the contract entered into by *Bonhams* with the *Buyer* (see Appendix 2 in the *Catalogue*).

**"Buyer's Premium"** the sum calculated on the *Hammer Price* at the rates stated in the *Notice to Bidders*.

**"Catalogue"** the *Catalogue* relating to the relevant *Sale*, including any representation of the *Catalogue* published on our *Website*.

**"Commission"** the *Commission* payable by the *Seller* to *Bonhams* calculated at the rates stated in the *Contract Form*.

**"Condition Report"** a report on the physical condition of a *Lot* provided to a *Bidder* or potential *Bidder* by *Bonhams* on behalf of the *Seller*.

**"Conditions of Sale"** the *Notice to Bidders*, *Contract for Sale*, *Buyer's Agreement* and Definitions and Glossary.

**"Consignment Fee"** a fee payable to *Bonhams* by the *Seller* calculated at rates set out in the Conditions of Business.

**"Consumer"** a natural person who is acting for the relevant purpose outside his trade, *Business* or profession.

**"Contract Form"** the *Contract Form*, or vehicle *Entry* form, as applicable, signed by or on behalf of the *Seller* listing the *Lots* to be offered for *Sale* by *Bonhams*.

**"Contract for Sale"** the *Sale* contract entered into by the *Seller* with the *Buyer* (see Appendix 1 in the *Catalogue*).

**"Contractual Description"** the only *Description* of the *Lot* (being that part of the *Entry* about the *Lot* in the *Catalogue* which is in bold letters, any photograph (except for the colour) and the contents of any *Condition Report*) to which the *Seller* undertakes in the *Contract for Sale* the *Lot* corresponds.

**"Description"** any statement or representation in any way descriptive of the *Lot*, including any statement or representation relating to its authorship, attribution, condition, provenance, authenticity, style, period, age, suitability, quality, origin, value, estimated selling price (including the *Hammer Price*).

**"Entry"** a written statement in the *Catalogue* identifying the *Lot* and its *Lot* number which may contain a *Description* and illustration(s) relating to the *Lot*.

**"Estimate"** a statement of our opinion of the range within which the hammer is likely to fall.

**"Expenses"** charges and *Expenses* paid or payable by *Bonhams* in respect of the *Lot* including legal *Expenses*, banking charges and *Expenses* incurred as a result of an electronic transfer of money, charges and *Expenses* for loss and damage cover, insurance, *Catalogue* and other reproductions and illustrations, any customs duties, advertising, packing or shipping costs, reproductions rights' fees, taxes, levies, costs of testing, searches or enquiries, preparation of the *Lot* for *Sale*, storage charges, removal charges, removal charges or costs of collection from the *Seller* as the *Seller's* agents or from a defaulting *Buyer*, plus *VAT* if applicable.

**"Forgery"** an imitation intended by the maker or any other person to deceive as to authorship, attribution, origin, authenticity, style, date, age, period, provenance, culture, source or composition, which at the date of the *Sale* had a value materially less than it would have had if the *Lot* had not been such an imitation, and which is not stated to be such an imitation in any description of the *Lot*. A *Lot* will not be a *Forgery* by reason of any damage to, and/or restoration and/or modification work (including repainting or over painting) having been carried out on the *Lot*, where that damage, restoration or modification work (as the case may be) does not substantially affect the identity of the *Lot* as one conforming to the *Description* of the *Lot*.

**"Guarantee"** the obligation undertaken personally by *Bonhams* to the *Buyer* in respect of any *Forgery* and, in the case of specialist *Stamp Sales* and/or specialist *Book Sales*, a *Lot* made up of a *Stamp* or *Stamps* or a *Book* or *Books* as set out in the *Buyer's Agreement*.

**"Hammer Price"** the price in the currency in which the *Sale* is conducted at which a *Lot* is knocked down by the *Auctioneer*.

**"Loss and Damage Warranty"** means the warranty described in paragraph 8.2 of the Conditions of Business.

**"Loss and Damage Warranty Fee"** means the fee described in paragraph 8.2.3 of the Conditions of Business.

**"Lot"** any item consigned to *Bonhams* with a view to its *Sale* at auction or by private treaty (and reference to any *Lot* will include, unless the context otherwise requires, reference to individual items comprised in a group of two or more items offered for *Sale* as one *Lot*).

**"Motoring Catalogue Fee"** a fee payable by the *Seller* to *Bonhams* in consideration of the additional work undertaken by *Bonhams* in respect of the cataloguing of motor vehicles and in respect of the promotion of *Sales* of motor vehicles.

**"New Bond Street"** means *Bonhams'* saleroom at 101 New Bond Street, London W1S 1SR.

**"Notional Charges"** the amount of *Commission* and *VAT* which would have been payable if the *Lot* had been sold at the *Notional Price*.

**"Notional Fee"** the sum on which the *Consignment Fee* payable to *Bonhams* by the *Seller* is based and which is calculated according to the formula set out in the Conditions of Business.

**"Notional Price"** the latest in time of the average of the high and low *Estimates* given by us to you or stated in the *Catalogue* or, if no such *Estimates* have been given or stated, the *Reserve* applicable to the *Lot*.

**"Notice to Bidders"** the notice printed at the back or front of our *Catalogues*.

**"Purchase Price"** the aggregate of the *Hammer Price* and *VAT* on the *Hammer Price* (where applicable), the *Buyer's Premium* and *VAT* on the *Buyer's Premium* and any *Expenses*.

**"Reserve"** the minimum price at which a *Lot* may be sold (whether at auction or by private treaty).

**"Sale"** the auction *Sale* at which a *Lot* is to be offered for *Sale* by *Bonhams*.

**"Sale Proceeds"** the net amount due to the *Seller* from the *Sale* of a *Lot*, being the *Hammer Price* less the *Commission*, any *VAT* chargeable thereon, *Expenses* and any other amount due to us in whatever capacity and howsoever arising.

**"Seller"** the person who offers the *Lot* for *Sale* named on the *Contract Form*. Where the person so named identifies on the form another person as acting as his agent, or where the person named on the *Contract Form* acts as an agent for a principal (whether such agency is disclosed to *Bonhams* or not), "Seller" includes both the agent and the principal who shall be jointly and severally liable as such. The *Seller* is also referred to in the Conditions of Business by the words "you" and "your".

**"Specialist Examination"** a visual examination of a *Lot* by a specialist on the *Lot*.

**"Stamp"** means a postage *Stamp* offered for *Sale* at a Specialist *Stamp Sale*.

**"Standard Examination"** a visual examination of a *Lot* by a non-specialist member of *Bonhams'* staff.

**"Storage Contract"** means the contract described in paragraph 8.3.3 of the Conditions of Business or paragraph 4.4 of the *Buyer's Agreement* (as appropriate).

**"Storage Contractor"** means the company identified as such in the *Catalogue*.

**"Terrorism"** means any act or threatened act of terrorism, whether any person is acting alone or on behalf of or in connection with any organisation(s) and/or government(s), committed for political, religious or ideological or similar purposes including, but not limited to, the intention to influence any government and/or put the public or any section of the public into fear.

**"Trust Account"** the bank account of *Bonhams* into which all sums received in respect of the *Purchase Price* of any *Lot* will be paid, such account to be a distinct and separate account to *Bonhams'* normal business bank account.

**"VAT"** value added tax at the prevailing rate at the date of the *Sale* in the United Kingdom.

**"Website"** *Bonhams Website* at [www.bonhams.com](http://www.bonhams.com)

**"Withdrawal Notice"** the *Seller's* written notice to *Bonhams* revoking *Bonhams'* instructions to sell a *Lot*.

**"Without Reserve"** where there is no minimum price at which a *Lot* may be sold (whether at auction or by private treaty).

**GLOSSARY**

The following expressions have specific legal meanings with which you may not be familiar. The following glossary is intended to give you an understanding of those expressions but is not intended to limit their legal meanings:

**"artist's resale right"**: the right of the creator of a work of art to receive a payment on *Sales* of that work subsequent to the original *Sale* of that work by the creator of it as set out in the Artists Resale Right Regulations 2006.

**"bailee"**: a person to whom goods are entrusted.

**"indemnity"**: an obligation to put the person who has the benefit of the indemnity in the same position in which he would have been, had the circumstances giving rise to the indemnity not arisen and the expression "indemnify" is construed accordingly.

**"interpleader proceedings"**: proceedings in the Courts to determine ownership or rights over a *Lot*.

**"knocked down"**: when a *Lot* is sold to a *Bidder*, indicated by the fall of the hammer at the *Sale*.

**"lien"**: a right for the person who has possession of the *Lot* to retain possession of it.

**"risk"**: the possibility that a *Lot* may be lost, damaged, destroyed, stolen, or deteriorate in condition or value.

**"title"**: the legal and equitable right to the ownership of a *Lot*.

**"tort"**: a legal wrong done to someone to whom the wrong doer has a duty of care.

**SALE OF GOODS ACT 1979**

The following is an extract from the Sale of Goods Act 1979:

"Section 12 Implied terms about title, etc

- (1) In a contract of sale, other than one to which subsection (3) below applies, there is an implied term on the part of the seller that in the case of a sale he has a right to sell the goods, and in the case of an agreement to sell he will have such a right at the time when the property is to pass.
- (2) In a contract of sale, other than one to which subsection (3) below applies, there is also an implied term that-
  - (a) the goods are free, and will remain free until the time when the property is to pass, from any charge or encumbrance not disclosed or known to the buyer before the contract is made, and
  - (b) the buyer will enjoy quiet possession of the goods except in so far as it may be disturbed by the owner or other person entitled to the benefit of any charge or encumbrance so disclosed or known.
- (3) This subsection applies to a contract of sale in the case of which there appears from the contract or is to be inferred from its circumstances an intention that the seller should transfer only such title as he or a third person may have.
- (4) In a contract to which subsection (3) above applies there is an implied term that all charges or encumbrances known to the seller and not known to the buyer have been disclosed to the buyer before the contract is made.
- (5) In a contract to which subsection (3) above applies there is also an implied term that none of the following will disturb the buyer's quiet possession of the goods, namely:
  - (a) the seller;
  - (b) in a case where the parties to the contract intend that the seller should transfer only such title as a third person may have, that person;
  - (c) anyone claiming through or under the seller or that third person otherwise than under a charge or encumbrance disclosed or known to the buyer before the contract is made.
- (5A) As regards England and Wales and Northern Ireland, the term implied by subsection (1) above is a condition and the terms implied by subsections (2), (4) and (5) above are warranties."

# Bonhams Specialist Departments

---

## 19th Century Paintings

London  
Charles O' Brien  
+44 20 7468 8360  
New York  
Madalina Lazen  
+1 212 644 9108

## 20th Century British Art

London  
Matthew Bradbury  
+44 20 7468 8295

## 20th Century Fine Art

San Francisco  
Sonja Moro  
+1 415 503 3412

## Aboriginal Art

Australia  
Francesca Cavazzini  
+61 2 8412 2222

## African, Oceanic & Pre-Columbian Art

Los Angeles  
Fredric W. Backlar  
+1 323 436 5416 •

## American Paintings

New York  
Jennifer Jacobsen  
+1 917 206 1699  
Elizabeth Goodridge  
+1 917 206 1621

## Antiquities

London  
Francesca Hickin  
+44 20 7468 8226

## Antique Arms & Armour

London  
David Williams  
+44 20 7393 3807

## Art Collections, Estates & Valuations

London  
Harvey Cammell  
+44 (0) 20 7468 8340  
New York  
Sherri Cohen  
+1 917 206 1671  
Los Angeles  
Leslie Wright  
+1 323 436 5408  
Joseph Francaviglia  
+1 323 436 5443  
Lydia Ganey  
+1 323 436 4496  
San Francisco  
Victoria Richardson  
+1 415 503 3207  
Celeste Smith  
+1 415 503 3214

## Australian Art

Australia  
Merryn Schriever  
+61 2 8412 2222  
Alex Clark  
+61 3 8640 4088

## Australian Colonial Furniture and Australiana

+61 2 8412 2222

## Books, Maps & Manuscripts

London  
Matthew Haley  
+44 20 7393 3817  
New York  
Ian Ehling  
+1 212 644 9094  
Darren Sutherland  
+1 212 461 6531  
Los Angeles  
Catherine Williamson  
+1 323 436 5442  
San Francisco  
Adam Stackhouse  
+1 415 503 3266

## British & European Glass

London  
John Sandon  
+44 20 7468 8244

## British Ceramics

London  
John Sandon  
+44 20 7468 8244

## California & Western Paintings & Sculpture

Los Angeles  
Scot Levitt  
+1 323 436 5425  
Kathy Wong  
+1 323 436 5415  
San Francisco  
Aaron Bastian  
+1 415 503 3241

## Carpets

London  
Helena Gumley-Mason  
+44 20 8393 2615

## Chinese & Asian Art

London  
Asaph Hyman  
+44 20 7468 5888  
New York  
Bruce MacLaren,  
+1 917 206 1677  
Ming Hua  
+1 646 837 8132  
Harold Yeo  
+1 917 206 1628 •  
Los Angeles  
Rachel Du  
+1 323 436 5587  
San Francisco  
Dessa Goddard  
+1 415 503 3333  
Henry Kleinhenz  
+1 415 503 3336  
Daniel Herske  
+1 415 503 3271  
Lingling Shang  
+1 415 503 3207 •  
Amelia Chao  
+1 415 503 3397

## Hong Kong

Xibo Wang,  
+852 3607 0010  
Australia  
Yvett Klein,  
+61 2 8412 2231

## Clocks

London  
James Stratton  
+44 20 7468 8364  
New York  
Jonathan Snellenburg  
+1 212 461 6530

## Coins & Medals

London  
John Millensted  
+44 20 7393 3914  
Los Angeles  
Paul Song  
+1 323 436 5455

## Entertainment

Memorabilia  
London  
Katherine Schofield  
+44 20 7393 3871  
Los Angeles  
Catherine Williamson  
+1 323 436 5442  
Dana Hawkes  
+1 978 283 1518

## European Ceramics

London  
Sebastian Kuhn  
+44 20 7468 8384

## European Paintings

London  
Charles O' Brien  
+44 20 7468 8360  
New York  
Madalina Lazen  
+1 212 644 9108  
Los Angeles  
Mark Fisher  
+1 323 436 5488  
Rocco Rich  
+1 323 436 5410

## European Sculptures & Works of Art

London  
Michael Lake  
+44 20 8963 6813

## Furniture and Decorative Art

London  
Thomas Moore  
+44 20 8963 2816  
Los Angeles  
Angela Past  
+1 323 436 5422  
Anna Hicks  
+1 323 436 5463

## Greek Art

London  
Anastasia Orfanidou  
+44 20 7468 8356

## Golf Sporting Memorabilia

Edinburgh  
Kevin McGimpsey  
+44 131 240 2296  
Hamish Wilson  
+44 131 240 0916

## Irish Art

London  
Penny Day  
+44 20 7468 8366

## Impressionist & Modern Art

London  
India Phillips  
+44 20 7468 8328  
New York  
Caitlyn Pickens  
+1 212 644 9135  
Los Angeles  
Kathy Wong  
+1 323 436 5415

## Indian, Himalayan & Southeast Asian Art

New York  
Mark Rasmussen  
+1 917 206 1688  
Hong Kong  
Edward Wilkinson  
+852 2918 4321

## Islamic & Indian Art

London  
Oliver White  
+44 20 7468 8303

## Japanese Art

London  
Suzannah Yip  
+44 20 7468 8368  
New York  
Jeff Olson  
+1 212 461 6516

## Jewellery

London  
Jean Ghika  
+44 20 7468 8282  
Emily Barber  
+44 20 7468 8284  
New York  
Caroline Morrissey  
+1 212 644 9046  
Camille Barbier  
+1 212 644 9035  
Los Angeles  
Dana Ehrman  
+1 323 436 5407  
Alexis Vourvoulis  
+1 323 436 5483  
Emily Waterfall  
+1 323 436 5426  
San Francisco  
Shannon Beck  
+1 415 503 3306  
Hong Kong  
Graeme Thompson  
+852 3607 0006

## Marine Art

London  
Veronique Scorer  
+44 20 7393 3962

**Mechanical Music**  
London  
Jon Baddeley  
+44 20 7393 3872

**Modern & Contemporary  
African Art**  
London  
Giles Peppiatt  
+ 44 20 7468 8355

**Modern & Contemporary  
Middle Eastern Art**  
London  
Nima Sagharchi  
+44 20 7468 8342

**Modern & Contemporary  
South Asian Art**  
London  
Tahmina Ghaffar  
+44 207 468 8382

**Modern Decorative  
Art + Design**  
London  
Mark Oliver  
+44 20 7393 3856  
**New York**  
Benjamin Walker  
+1 212 710 1306  
Dan Tolson  
+1 917 206 1611  
**Los Angeles**  
Jason Stein  
+1 323 436 5466

**Motor Cars**  
London  
Tim Schofield  
+44 20 7468 5804  
**New York**  
Rupert Banner  
+1 212 461 6515  
Eric Minoff  
+1 917 206 1630  
Evan Ide  
+1 917 340 4657  
**Los Angeles**  
Jakob Greisen  
+1 415 503 3284  
Michael Caimano  
+1 929 666 2243  
**San Francisco**  
Mark Osborne  
+1 415 503 3353  
**Europe**  
Philip Kantor  
+32 476 879 471

**Automobilia**  
London  
Toby Wilson  
+44 20 8963 2842  
Adrian Pipiros  
+44 20 8963 2840

**Motorcycles**  
London  
Ben Walker  
+44 20 8963 2819  
James Stensel  
+44 20 8963 2818  
**Los Angeles**  
Craig Mallery  
+1 323 436 5470

**Museum Services**  
San Francisco  
Laura King Pfaff  
+1 415 503 3210

**Native American Art**  
San Francisco  
Ingmars Lindbergs  
+1 415 503 3393

**Natural History**  
Los Angeles  
Claudia Florian  
+1 323 436 5437  
+1 310 469 8567 •  
Thomas E. Lindgren  
+1 310 469 8567 •

**Old Master Pictures**  
London  
Andrew Mckenzie  
+44 20 7468 8261  
**Los Angeles**  
Mark Fisher  
+1 323 436 5488

**Orientalist Art**  
London  
Charles O'Brien  
+44 20 7468 8360

**Photography**  
New York  
Laura Paterson  
+1 917 206 1653  
**Los Angeles & San Francisco**  
Morisa Rosenberg  
+1 323 436 5435  
+1 415 503 3259

**Post-War and  
Contemporary Art**  
London  
Ralph Taylor  
+44 20 7447 7403  
**New York**  
Muys Snijders, + 212 644 9020  
Jeremy Goldsmith, + 1 917 206 1656  
Jacqueline Towers-Perkins,  
+1 212 644 9039  
Lisa De Simone, +1 917 206 1607

**Los Angeles**  
Sharon Squires  
+1 323 436 5404  
Alexis Chompaisal  
+1 323 436 5469

**Prints and Multiples**  
London  
Lucia Tro Santafe  
+44 20 7468 8262  
**New York**  
Deborah Ripley  
+1 212 644 9059  
**Los Angeles**  
Morisa Rosenberg  
+1 323 447 9374

**Russian Art**  
London  
Daria Khristova  
+44 20 7468 8334  
**New York**  
Yelena Harbick  
+1 212 644 9136

**Scientific Instruments**  
London  
Jon Baddeley  
+44 20 7393 3872  
**New York**  
Jonathan Snellenburg  
+1 212 461 6530

**Scottish Pictures**  
Edinburgh  
Chris Brickley  
+44 131 240 2297

**Silver & Gold Boxes**  
London  
Ellis Finch  
+44 20 7393 3973

**Sporting Guns**  
London  
Patrick Hawes  
+44 20 7393 3815

**Space History**  
San Francisco  
Adam Stackhouse  
+1 415 503 3266

**Travel Pictures**  
London  
Veronique Scorer  
+44 20 7393 3962

**Watches &  
Wristwatches**  
London  
Jonathan Darracott  
+44 20 7447 7412  
**New York**  
Jonathan Snellenburg  
+1 212 461 6530  
**Hong Kong**  
Tim Bourne  
+852 3607 0021

**Whisky**  
Edinburgh  
Martin Green  
+44 131 225 2266  
**Hong Kong**  
Daniel Lam  
+852 2918 4321

**Wine**  
London  
Richard Harvey  
+44 20 7468 5811  
**San Francisco**  
Christine Ballard  
+1 415 503 3221  
**Hong Kong**  
Daniel Lam  
+852 2918 4321

## Client Services Departments

### U.S.A.

**San Francisco**  
(415) 861 7500  
(415) 861 8951 fax  
Monday - Friday, 9am to 5pm

**Los Angeles**  
(323) 850 7500  
(323) 850 6090 fax  
Monday - Friday, 9am to 5pm

**New York**  
(212) 644 9001  
(212) 644 9009 fax  
Monday - Friday, 9am to 5pm

**Toll Free**  
(800) 223 2854

### U.K.

Monday to Friday 8.30 to 6.00  
+44 (0) 20 7447 7447

### Bids

+44 (0) 20 7447 7447  
+44 (0) 20 7447 7401 fax  
To bid via the internet please  
visit [bonhams.com](http://bonhams.com)

• Indicates independent contractor

# Bonhams Global Network

---

## International Salerooms

**London**  
101 New Bond Street  
London W1S 1SR  
+44 20 7447 7447  
+44 20 7447 7400 fax

**New York**  
580 Madison Avenue  
New York, NY  
10022  
+1 (212) 644 9001  
+1 (212) 644 9007 fax

**Hong Kong**  
Suite 2001  
One Pacific Place  
88 Queensway  
Admiralty  
Hong Kong  
+852 2918 4321  
+852 2918 4320 fax

**London**  
Montpelier Street London  
SW7 1HH  
+44 20 7393 3900  
+44 20 7393 3905 fax

---

## Offices and Associated Companies

### AFRICA

**Nigeria**  
Neil Coventry  
+234 (0)8110 033 792  
+27 (0)7611 20171  
neil.coventry@bonhams.com

**South Africa - Johannesburg**  
Penny Culverwell  
+27 (0)71 342 2670  
penny.culverwell@bonhams.com

### AUSTRALIA

**Sydney**  
97-99 Queen Street,  
Woollahra, NSW 2025  
Australia  
+61 (0) 2 8412 2222  
+61 (0) 2 9475 4110 fax  
info.aus@bonhams.com

**Melbourne**  
Como House  
Como Avenue  
South Yarra  
Melbourne VIC 3141  
Australia  
+61 (0) 3 8640 4088  
+61 (0) 2 9475 4110 fax  
info.aus@bonhams.com

### ASIA

**Beijing**  
Jessica Zhang  
Suite 511  
Chang An Club  
10 East Chang An  
Avenue  
Beijing 100006  
+86(0) 10 6528 0922  
+86(0) 10 6528 0933  
fax  
beijing@bonhams.com

**Singapore**  
Bernadette Rankine  
11th Floor, Wisma Atria  
435 Orchard Road  
Singapore 238877  
+65 (0) 6701 8038  
+65 (0) 6701 8001 fax  
bernadette.rankine@bonhams.com

**Taiwan**  
37th Floor, Taipei 101  
Tower  
No. 7 Xinyi Road,  
Section 5  
Taipei, 100  
+886 2 8758 2898  
+886 2 8758 2897 fax  
taiwan@bonhams.com

### EUROPE

**Austria**  
Thomas Kamm  
+49 (0) 89 2420 5812  
austria@bonhams.com

**Belgium**  
Boulevard  
Saint-Michel 101  
1040 Brussels  
+32 (0) 2 736 5076  
belgium@bonhams.com

**France**  
4 rue de la Paix  
75002 Paris  
+33 (0) 1 42 61 10 10  
paris@bonhams.com

**Germany - Cologne**  
Katharina Schmid  
+49 (0) 221 9865 3419  
+49 (0) 157 9234 6717  
cologne@bonhams.com

**Germany - Hamburg**  
Marie Becker Lingenthal  
+49 (0) 17 4236 0022  
hamburg@bonhams.com

**Germany - Munich**  
Maximilianstrasse 52  
80538 Munich  
+49 (0) 89 2420 5812  
munich@bonhams.com

**Germany - Stuttgart**  
Neue Brücke 2  
New Bridge Offices  
70173 Stuttgart  
+49 (0) 711 2195 2640  
+49 (0) 157 9234 6717  
stuttgart@bonhams.com

**Greece**  
7 Neofytou Vamva  
Street  
Athens 10674  
+30 (0) 210 3636 404  
athens@bonhams.com

**Ireland**  
31 Molesworth Street  
Dublin 2  
+353 (0) 1 602 0990  
ireland@bonhams.com

**Italy - Milan**  
Via Boccaccio 22  
20123 Milano  
+39 0 2 4953 9020  
milan@bonhams.com

**Italy - Rome**  
Via Sicilia 50  
00187 Roma  
+39 06 485 900  
rome@bonhams.com

**The Netherlands**  
De Lairessestraat 154  
1075 HL Amsterdam  
+31 (0) 20 67 09 701  
amsterdam@bonhams.com

**Portugal**  
Rua Bartolomeu Dias  
nº160. 1º  
Belem  
1400-031 Lisbon  
+351 218 293 291  
portugal@bonhams.com

**Spain - Barcelona**  
Teresa Ybarra  
+34 930 156 686  
+34 680 347 606  
barcelona@bonhams.com

**Spain - Madrid**  
Núñez de Balboa no  
4-1C  
28001 Madrid  
+34 915 78 17 27  
madrid@bonhams.com

**Switzerland - Geneva**  
Rue Etienne-Dumont 10  
1204 Geneva  
+41 (0) 22 300 3160  
geneva@bonhams.com

**Switzerland - Zurich**  
Andrea Bodmer  
Dreikönigstrasse 31a  
8002 Zürich  
+41 44 281 9535  
zurich@bonhams.com

### NORTH AMERICA

**USA**  
Representatives:  
**Arizona**  
Terri Adrian-Hardy  
+1 (602) 859 1843  
arizona@bonhams.com

**California Central Valley**  
David Daniel  
+1 (916) 364 1645  
sacramento@bonhams.com

**California Palm Springs**  
Brooke Sivo  
+1 (760) 350 4255  
palmsprings@bonhams.com

**California San Diego**  
Brooke Sivo  
+1 (760) 567 1744  
sandiego@bonhams.com

**Colorado**  
Lance Vigil  
+1 (720) 355 3737  
colorado@bonhams.com

**Florida**  
April Matteini  
+1 (305) 978 2459  
florida@bonhams.com  
Alexis Butler  
+1 (305) 878 5366  
florida@bonhams.com

**Georgia**  
Mary Moore Bethea  
+1 (404) 842 1500  
georgia@bonhams.com

**Illinois & Midwest**  
Natalie B. Waechter  
+1 (773) 267 3300  
chicago@bonhams.com

---

**Edinburgh**

22 Queen Street  
Edinburgh  
EH2 1JX  
+44 131 225 2266  
+44 131 220 2547 fax

**Los Angeles**

7601 W. Sunset Boulevard  
Los Angeles  
CA 90046  
+1 (323) 850 7500  
+1 (323) 850 6090 fax

**San Francisco**

220 San Bruno Avenue  
San Francisco  
CA 94103  
+1 (415) 861 7500  
+1 (415) 861 8951 fax

---

**UNITED KINGDOM****Massachusetts**

Amy Corcoran  
+1 (617) 742 0909  
boston@bonhams.com

**Nevada**

David Daniel  
+1 (775) 831 0330  
nevada@bonhams.com

**New Mexico**

Terri Adrian-Hardy  
+1 (602) 859 1843  
newmexico@bonhams.com

**Oregon**

Sheryl Acheson  
+1 (971) 727 7797  
oregon@bonhams.com

**Texas – Dallas**

Mary Holm  
+1 (214) 557 2716  
dallas@bonhams.com

**Texas – Houston**

Lindsay Davis  
+1 (713) 855 7452  
texas@bonhams.com

**Virginia**

Gertraud Hechl  
+1 (202) 422 2733  
virginia@bonhams.com

**Washington**

Heather O'Mahony  
+1 (206) 566 3913  
seattle@bonhams.com

**Washington DC  
Mid-Atlantic Region**

Gertraud Hechl  
+1 (202) 422 2733  
washingtonDC@bonhams.com

**Canada****Toronto, Ontario**

Kristin Kearney  
340 King St East  
2nd Floor, Office 213  
Toronto ON  
M5A 1K8  
+1 (416) 462 9004  
info.ca@bonhams.com

**Montreal, Quebec**

David Kelsey  
+1 (514) 894 1138  
info.ca@bonhams.com

**MIDDLE EAST****Israel**

Joslyne Halibard  
+972 (0)54 553 5337  
joslyne.halibard@bonhams.com

**SOUTH AMERICA****Brazil**

+55 11 3031 4444  
+55 11 3031 4444  
fax

**South East England****Guildford**

Millmead,  
Guildford,  
Surrey GU2 4BE  
+44 1483 504 030  
+44 1483 450 205  
fax

**Isle of Wight**

+44 1273 220 000

Representative:

**Brighton & Hove**  
Tim Squire-Sanders  
+44 1273 220 000

**West Sussex**

+44 (0) 1273 220 000

**South West England****Bath**

Queen Square House  
Charlotte Street  
Bath BA1 2LL  
+44 1225 788 988  
+44 1225 446 675  
fax

**Cornwall – Truro**

36 Lemon Street  
Truro  
Cornwall  
TR1 2NR  
+44 1872 250 170  
+44 1872 250 179  
fax

**Exeter**

The Lodge  
Southernhay West  
Exeter, Devon  
EX1 1JG  
+44 1392 425 264  
+44 1392 494 561  
fax

**Tetbury**

Eight Bells House  
14 Church Street  
Tetbury  
Gloucestershire  
GL8 8JG  
+44 1666 502 200  
+44 1666 505 107  
fax

Representatives:

**Dorset**  
Bill Allan  
+44 1935 815 271

**East Anglia and Bury St. Edmunds**

Michael Steel  
+44 1284 716 190

**Norfolk**

The Market Place  
Reepham  
Norfolk NR10 4JJ  
+44 1603 871 443  
+44 1603 872 973  
fax

**Midlands****Knowle**

The Old House  
Station Road  
Knowle, Solihull  
West Midlands  
B93 0HT  
+44 1564 776 151  
+44 1564 778 069  
fax

**Oxford**

Banbury Road  
Shipton on Cherwell  
Kidlington OX5 1JH  
+44 1865 853 640  
+44 1865 372 722  
fax

**Yorkshire & North East England****Leeds**

The West Wing  
Bowcliffe Hall  
Bramham  
Leeds  
LS23 6LP  
+44 113 234 5755  
+44 113 244 3910  
fax

**North West England****Chester**

2 St Johns Court,  
Vicars Lane,  
Chester,  
CH1 1QE  
+44 1244 313 936  
+44 1244 340 028  
fax

**Manchester**

The Stables  
213 Ashley Road  
Hale WA15 9TB  
+44 161 927 3822  
+44 161 927 3824  
fax

**Channel Islands****Jersey**

La Chasse  
La Rue de la Vallee  
St Mary  
Jersey JE3 3DL  
+44 1534 722 441  
+44 1534 759 354  
fax

Representative:

**Guernsey**  
+44 1481 722 448

**Scotland****Bonhams West of Scotland**

Kirkhill House  
Broom Road East  
Newton Mearns  
Glasgow  
G77 5LL  
+44 141 223 8866

**Wales**

Representatives:

**Cardiff**  
Jeff Muse  
+44 2920 727 980

# Registration and Bidding Form

(Attendee / Absentee / Online / Telephone Bidding)

Please circle your bidding method above.

<input type="checkbox"/>	<input type="checkbox"/>	<input type="checkbox"/>	<input type="checkbox"/>
--------------------------	--------------------------	--------------------------	--------------------------

Paddle number (for office use only)

# Bonhams

**This sale will be conducted in accordance with Bonhams' Conditions of Sale and bidding and buying at the Sale will be regulated by these Conditions. You should read the Conditions in conjunction with the Sale Information relating to this Sale which sets out the charges payable by you on the purchases you make and other terms relating to bidding and buying at the Sale. You should ask any questions you have about the Conditions before signing this form. These Conditions also contain certain undertakings by bidders and buyers and limit Bonhams' liability to bidders and buyers.**

### Data protection – use of your information

Where we obtain any personal information about you, we shall only use it in accordance with the terms of our Privacy Policy (subject to any additional specific consent(s) you may have given at the time your information was disclosed). A copy of our Privacy Policy can be found on our website ([www.bonhams.com](http://www.bonhams.com)) or requested by post from Customer Services Department, 101 New Bond Street, London W1S 1SR United Kingdom or by e-mail from [info@bonhams.com](mailto:info@bonhams.com). We may disclose your personal information to any member of our group which means our subsidiaries, our ultimate holding company and its subsidiaries (whether registered in the UK or elsewhere). We will not disclose your data to anyone outside our group but we may from time to time provide you with information about goods and services which we feel maybe of interest to you including those provided by third parties.

Would you like to receive information from us by email?  or post

### Notice to Bidders.

Clients are requested to provide photographic proof of ID - passport, driving licence, ID card, together with proof of address - utility bill, bank or credit card statement etc. Corporate clients should also provide a copy of their articles of association / company registration documents, together with a letter authorising the individual to bid on the company's behalf. Failure to provide this may result in your bids not being processed. For higher value lots you may also be asked to provide a bank reference.

### If successful

I will collect the purchases myself

Please arrange shippers to contact me with a quote and I agree that you may pass them my contact details.

Sale title: A Private Collection of Lalique Glass		Sale date: 20 February 2019													
Sale no. 25324		Sale venue: Knightsbridge, London													
<p>If you are not attending the sale in person, please provide details of the Lots on which you wish to bid at least 24 hours prior to the sale. Bids will be rounded down to the nearest increment. Please refer to the Notice to Bidders in the catalogue for further information relating to Bonhams executing telephone, online or absentee bids on your behalf. Bonhams will endeavour to execute these bids on your behalf but will not be liable for any errors or failing to execute bids.</p> <p><b>General Bid Increments:</b></p> <table border="0"> <tr> <td>£10 - 200 .....by 10s</td> <td>£10,000 - 20,000 .....by 1,000s</td> </tr> <tr> <td>£200 - 500 .....by 20 / 50 / 80s</td> <td>£20,000 - 50,000 .....by 2,000 / 5,000 / 8,000s</td> </tr> <tr> <td>£500 - 1,000 .....by 50s</td> <td>£50,000 - 100,000 .....by 5,000s</td> </tr> <tr> <td>£1,000 - 2,000 .....by 100s</td> <td>£100,000 - 200,000 .....by 10,000s</td> </tr> <tr> <td>£2,000 - 5,000 .....by 200 / 500 / 800s</td> <td>above £200,000 .....at the auctioneer's discretion</td> </tr> <tr> <td>£5,000 - 10,000 .....by 500s</td> <td></td> </tr> </table> <p><b>The auctioneer has discretion to split any bid at any time.</b></p>				£10 - 200 .....by 10s	£10,000 - 20,000 .....by 1,000s	£200 - 500 .....by 20 / 50 / 80s	£20,000 - 50,000 .....by 2,000 / 5,000 / 8,000s	£500 - 1,000 .....by 50s	£50,000 - 100,000 .....by 5,000s	£1,000 - 2,000 .....by 100s	£100,000 - 200,000 .....by 10,000s	£2,000 - 5,000 .....by 200 / 500 / 800s	above £200,000 .....at the auctioneer's discretion	£5,000 - 10,000 .....by 500s	
£10 - 200 .....by 10s	£10,000 - 20,000 .....by 1,000s														
£200 - 500 .....by 20 / 50 / 80s	£20,000 - 50,000 .....by 2,000 / 5,000 / 8,000s														
£500 - 1,000 .....by 50s	£50,000 - 100,000 .....by 5,000s														
£1,000 - 2,000 .....by 100s	£100,000 - 200,000 .....by 10,000s														
£2,000 - 5,000 .....by 200 / 500 / 800s	above £200,000 .....at the auctioneer's discretion														
£5,000 - 10,000 .....by 500s															
Customer Number		Title													
First Name		Last Name													
Company name (to be invoiced if applicable)															
Address															
City		County / State													
Post / Zip code		Country													
Telephone mobile		Telephone daytime													
Telephone evening		Fax													
Preferred number(s) in order for Telephone Bidding (inc. country code)															
E-mail (in capitals)															
By providing your email address above, you authorise Bonhams to send to this address information relating to Sales, marketing material and news concerning Bonhams. Bonhams does not sell or trade email addresses.															
I am registering to bid as a private buyer <input type="checkbox"/>		I am registering to bid as a trade buyer <input type="checkbox"/>													
If registered for VAT in the EU please enter your registration here: □□ / □□□ - □□□□ - □□		Please tick if you have registered with us before <input type="checkbox"/>													

Please note that all telephone calls are recorded.

Telephone or Absentee (T / A)	Lot no.	Brief description	MAX bid in GBP (excluding premium & VAT)	Covering bid ★

<b>FOR WINE SALES ONLY</b>	
Please leave lots "available under bond" in bond <input type="checkbox"/>	Please include delivery charges (minimum charge of £20 + VAT) <input type="checkbox"/>

<b>BY SIGNING THIS FORM YOU AGREE THAT YOU HAVE SEEN THE CATALOGUE AND HAVE READ AND UNDERSTOOD OUR CONDITIONS OF SALE AND WISH TO BE BOUND BY THEM, AND AGREE TO PAY THE BUYER'S PREMIUM, VAT AND ANY OTHER CHARGES MENTIONED IN THE NOTICE TO BIDDERS. THIS AFFECTS YOUR LEGAL RIGHTS.</b>	
Your signature:	Date:

★ Covering Bid: A maximum bid (exclusive of Buyers Premium and VAT) to be executed by Bonhams only if we are unable to contact you by telephone, or should the connection be lost during bidding.

**NB. Payment will only be accepted from an account in the same name as shown on the invoice and Auction Registration form.**

Please email or fax the completed Auction Registration form and requested information to:

Bonhams, Customer Services, 101 New Bond Street, London, W1S 1SR. Tel: +44 (0) 20 7447 7447 Fax: +44 (0) 20 7447 7401, [bids@bonhams.com](mailto:bids@bonhams.com)

Bonhams 1793 Limited. Montpelier Street, London SW7 1HH. Incorporated in England. Company Number 4326560.





**Bonhams**  
Montpelier Street  
Knightsbridge, London, SW7 1HH

---

+44 (0) 20 7393 3900  
[bonhams.com](http://bonhams.com)

**AUCTIONEERS SINCE 1793**